

BASIS OF BEARING

Forward bearing as published by the U.S.C. and G.S. from Δ COLLEGE to Δ VALLEY Dated 1946.

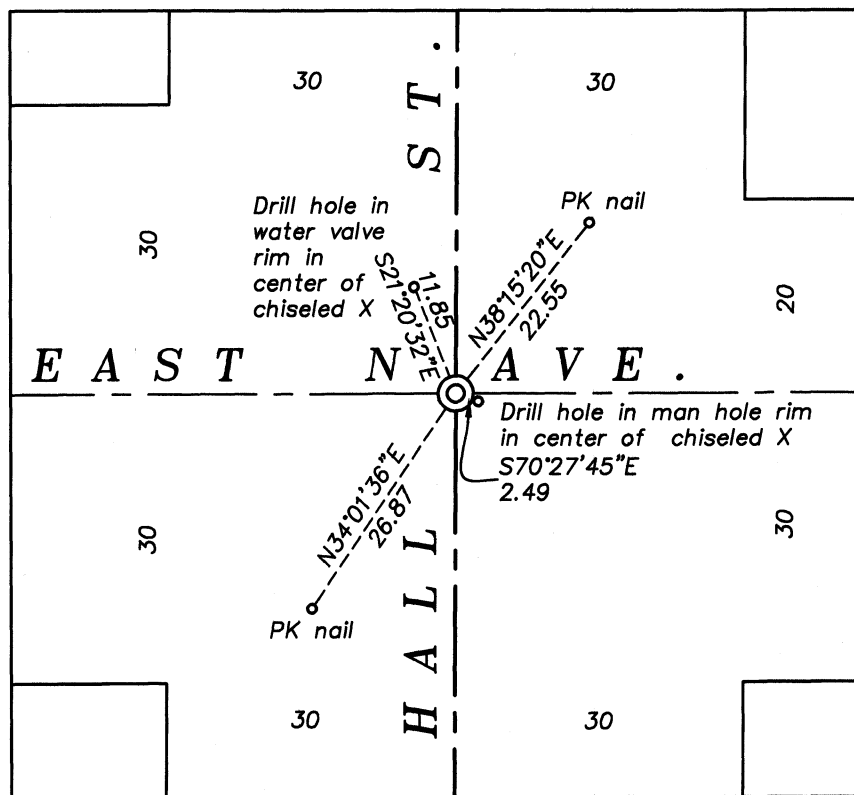
SCALE: 1"=80'

LEGEND

- ⊙ Found 3/4" iron pipe in concrete, set by Survey Number 18-89 (1922 Monumentation)
- ⊙ Found 1" brass disk with lead plug plug references set by survey number 001-2002
- ◆ Found 5/8" iron pin with plastic cap marked "BGA SURVEY MARKER" set by Survey Number 60-77
- ⊙ Found 5/8" iron pin with plastic cap marked "BGA SURVEY MARKER" set by Survey Number 23-71
- Found 5/8" iron pin with plastic cap marked "BGB SURVEY MARKER" set by Partition Plat 20070026T
- Found 5/8" iron pin with plastic cap marked "BGB SURVEY MARKER" set by Survey Number 017-2016
- ◆ Found 5/8" iron pin with plastic cap marked "BGB SURVEY MARKER" set by Walter Subdivision
- ◆ Found 5/8" iron pin with plastic cap marked "BGB SURVEY MARKER", unless otherwise noted, set by Minor Partition Plat 20040010T
- ▼ Found 5/8" iron pin with plastic cap marked "BGB SURVEY MARKER" set by Minor Partition Plat 20180012T
- ▲ Found 5/8" iron pin with plastic cap marked "BGB SURVEY MARKER" set by Survey Number 067-2015
- ⊙ Set 5/8"x30" iron pin with 2 1/2" brass cap marked "BAGETT GRIFFITH & BLACKMAN"
- Set references as noted
- () Record distance of Honan's Addition
- / / Record distance of Walter Subdivision
- [] Record distance of Survey Number 23-71
- - Record distance of Survey Number 60-77
- ^ ^ Record distance of Survey Number 001-2002
- { } Record distance of Survey Number 067-2015
- ~ ~ Record distance of Survey Number 017-2016
- \ \ Record distance of Partition Plat 20040010T
- * * Record distance of Partition Plat 20180012T
- (()) Record distance of Partition Plat 20070026T
- Centerline

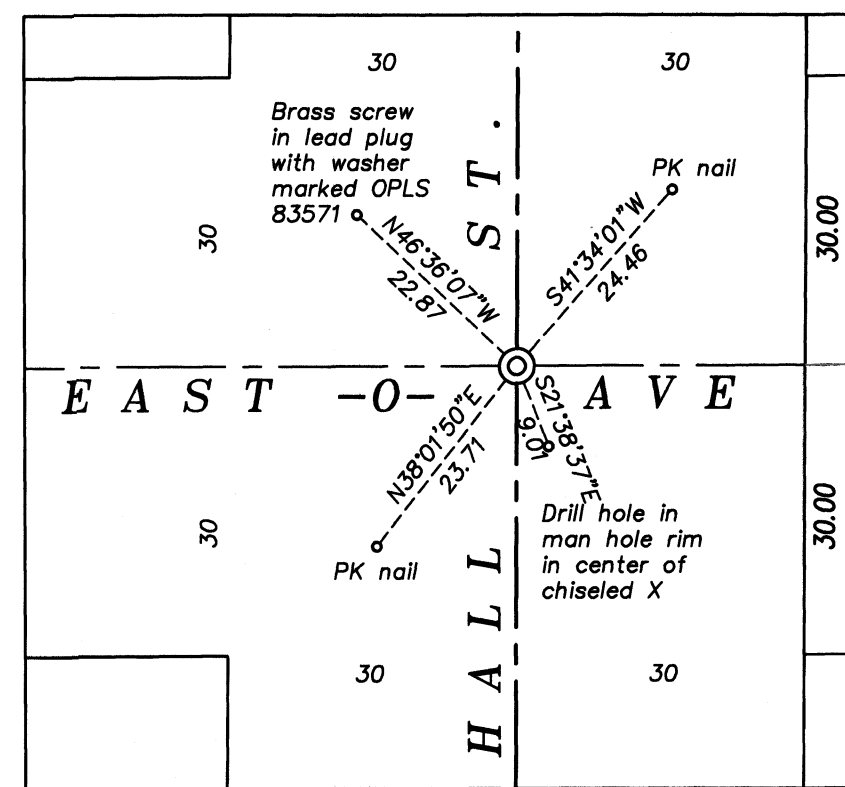
REFERENCE MATERIAL

- Plat of Honan's Addition to La Grande
- Plat of Walter Subdivision
- Survey Number 18-89 (remonumentation of La Grande)
- Survey Number 017-2016
- Survey Number 60-77
- Survey Number 23-71
- Survey Number 22-74
- Survey Number 19-63
- Survey Number 67-15
- Survey Number 26-72
- Survey Number 37-91
- Survey Number 009-2005
- Survey Number 001-2002
- Partition Plat Number 20070026T
- Partition Plat Number 20160013T
- Partition Plat Number 20040010T
- Partition Plat Number 20140007T
- Partition Plat Number 20180012T



REFERENCE DETAIL

SCALE: 1"=20'



REFERENCE DETAIL

SCALE: 1"=20'

NARRATIVE

This survey was done at the request of Kyle Carpenter, Public Works director for the City of La Grande. The purpose of this survey is to monument the street intersections following a paving project. The streets were originally dedicated in the plat of Honan's Addition. I find the monuments from surveys as shown and establish a best fit centerline from found pins as shown. Doing so is harmonious with record measurements. I find no other unusual conditions on this survey.

REGISTERED PROFESSIONAL LAND SURVEYOR

OREGON
JUNE 2, 2010
JEFFREY S. HSU
83571

Renewal Date: June 30, 2025

UNION COUNTY SURVEYOR

Date Received 2/21/24

Date Filed 2/21/24

By [Signature]

File No. 011-2024

BAGETT, GRIFFITH & BLACKMAN
2006 Adams Avenue, LaGrande, Oregon
Map of Survey
Sited in Hall Street between East L Avenue and Cove Avenue, City of La Grande

UNION COUNTY, OREGON

SURVEYED FOR	City of La Grande
SURVEYED BY	J. S. H.
Scale: 1" = 80'	Drawn by: K.A.T. 2/2024

SURVEY NUMBER 011-2024