

**UNION COUNTY
SURVEYOR**

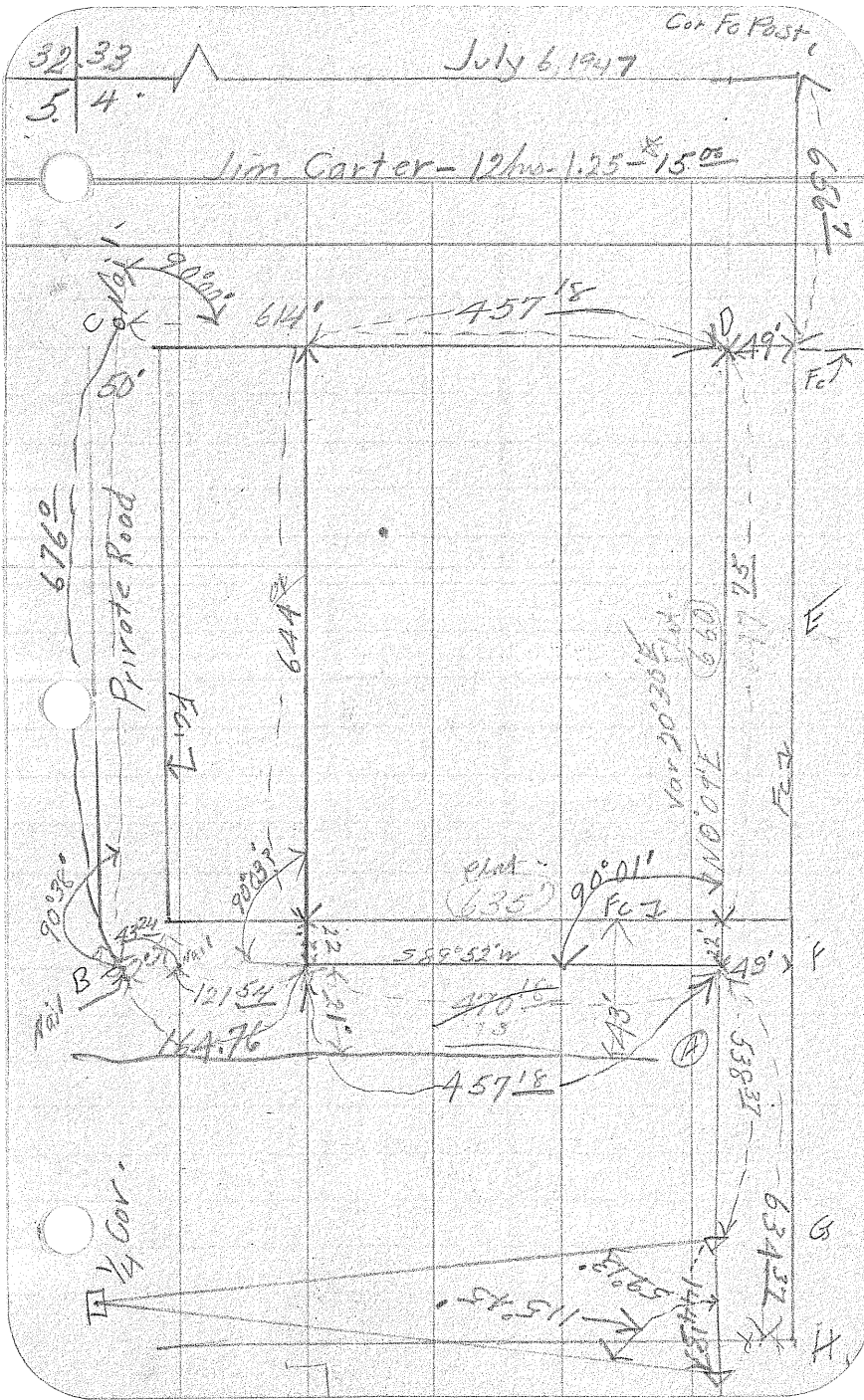
Date Received _____

Date Filed 3-4-86

By _____

file No. NARRATIVE 1/5

Sec Survey 165



Oregon State Highway Commission

TRAVERSE SHEET

Section SE 1/4 NW 1/4 Sec 4 T35R38E W.M. Calculated by _____
 Line A Sheet No. _____ Checked by _____

TE PRINTING DEPT.

STATION	CURVE DATA		Tan.	Sub. Tan.	P. I. to P. I.	Calculated Course	Cosine	Sine	LATITUDE		DEPARTURE		CO-ORDINATES	
	Degree	Angle							+ N.	- S.	+ E.	- W.	Lat.	Dep.
A						621.96 S89°52'W	0023271	9999973		145		621.96	2000.00	2000.00
B						676.00 N0°30'E	9999619	0087265	65.67597		590		1998.55	1378.04
C						614.00 S89°30'E	0087265	9999619		536	61398		2674.52	1383.94
D						322.45 S1°12'E	9997807	0209424		32238	675		2669.16	1997.92
E						347.20 S0°45'W	9999143	0130896		34717		454	1999.61	2000.13
F						538.37 S0°07'E	9999979	0020362		53837	110		1461.24	2001.23
G						144.18 S0°07'E	9999979	0020362		14418	029		1317.06	2001.52
H						1480.16 S59°06'W	5135413	8580649		76012		127007	701.12	731.16
I						1411.82 S64°08'W	4362784	8998117		61595		127037	701.11	731.15
J						105.85 N0°30'E	9999619	0087265	105.85		092		2674.52	1383.94
K						603.72 N53°25'W	5958745	8030776	359.74		48483		2780.37	1384.86
L						218.30 N46°06'W	6932970	7206520	151.35		15732		3140.11	900.03
M						22.60 N0°07'W	9999979	0020362	22.60		005		3291.46	742.71
N						656.70 S0°09'W	9999966	0026180	656.70		172		3314.06	742
													2669.16	1997
													3325.86	19

UNION COUNTY SURVEYOR

Date Received _____

Date Filed 3-4-86

By _____

File No. NARRATIVE 1/5

N 0°11'20" W
689.55

N 0°15' W
2642.25
Gov. Field Note 2613.6

North 4015-12926

N 89°27'40" E
1256.98
49
1305.86

NE Cor of NW 1/4 of NW 1/4

See Survey 165

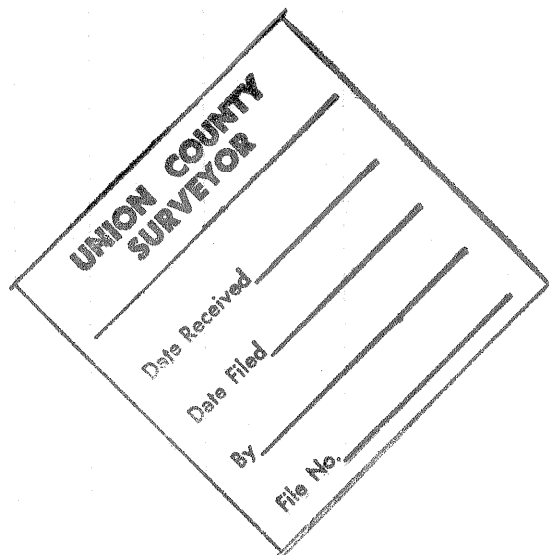
Oregon State Highway Commission

TRAVERSE SHEET

ty Section Calculated by
 hwy Line Sheet No. Checked by

STATE PRINTING DEPT.

STATION	CURVE DATA		Tan.	Sub. Tan.	P. I. to P. I.	Calculated Course	Cosine	Sine	LATITUDE		DEPARTURE		CO-ORDINATES	
	Degree	Angle							+ N.	- S.	+ E.	- W.	Lat.	Dep.
C						589°36'E								
D		0°57'2				49° N89°33'E	0078539	9999692	0.38		49°		266916	199792
O						627' 589°33'W	9999692	0078539		493	627'		266954	204692
P													26646	141922



32
5 4
Sec. Cor.
Lot 33 1406
Dep 742266

N 89° 28' E
1305.78

Lot 2664 39
Dep 1415 94
649.475
1/2 Pipe 613.24 E
OF Sec. Cor.
Common to Sec.
475 T3 S R38 E W/M
32 433 T2 S R38 E W/M

6567

Lot 2669 60
Dep 204686
1/2 Pipe

N 89° 33' E
6312

504

N 0° 11' W
6442

1293.425
675.24 E
OF Sec. Cor.
Common to
475 T3 S R38 E W/M
32 433 T2 S R38 E W/M

S 0° 11' E
6476

S 89° 52' W
6312

Lot 2022 20
Dep 204686
1/2 Pipe

Lot 2022 20
Dep 1417 70

N 0° 15' W
6139

6567

5 4
1/4 Cor.
Lot 701 11
Dep 731 15

923 3/4 from 4 Cor. to RR Track

2638 2'

UNION COUNTY SURVEYOR	
Date Received	_____
Date Filed	3-4-86
By	_____
File No.	NARRATIVE 1/5

SEE SURVEY 165

RR Track

5 4
8 9
Sec. Cor.