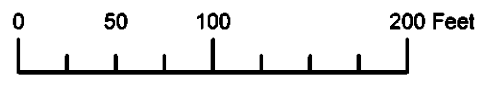
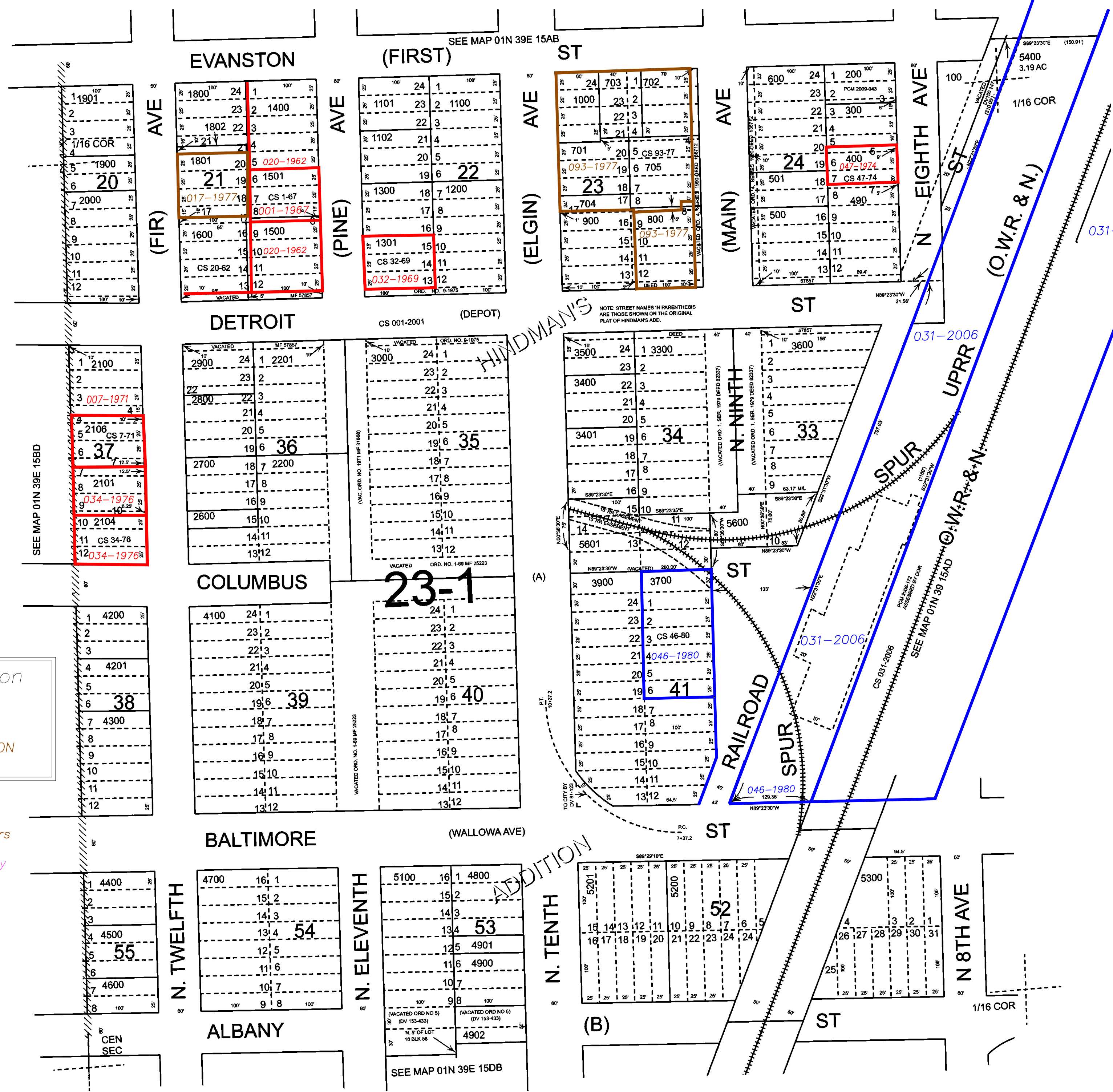


THIS MAP WAS PREPARED FOR ASSESSMENT PURPOSE ONLY



S.W. 1/4 N.E. 1/4 SEC. 15 T.1N. R.39E. W.M. UNION COUNTY 1" = 100'

01N39E15AC ELGIN



- CANCELLED:
- 700
 - 801
 - 802
 - 1001
 - 1502
 - 1601
 - 1700
 - 1701
 - 2102
 - 2103
 - 2105
 - 2300
 - 2400
 - 2500
 - 3000M1
 - 3100
 - 3200
 - 3700M1
 - 3800
 - 3901
 - 3902
 - 3903
 - 4000
 - 5000
 - 5400A1
 - 5400M1
 - 5500
 - 5601M1

Subdivisions on this page

HINDMAN'S ADDITION

- BGB Survey
- APA Survey
- Survey by Others
- Voelz Survey
- Old Book Survey

Revised: SH 3/1/2012

ELGIN 01N39E15AC