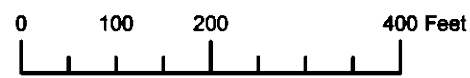
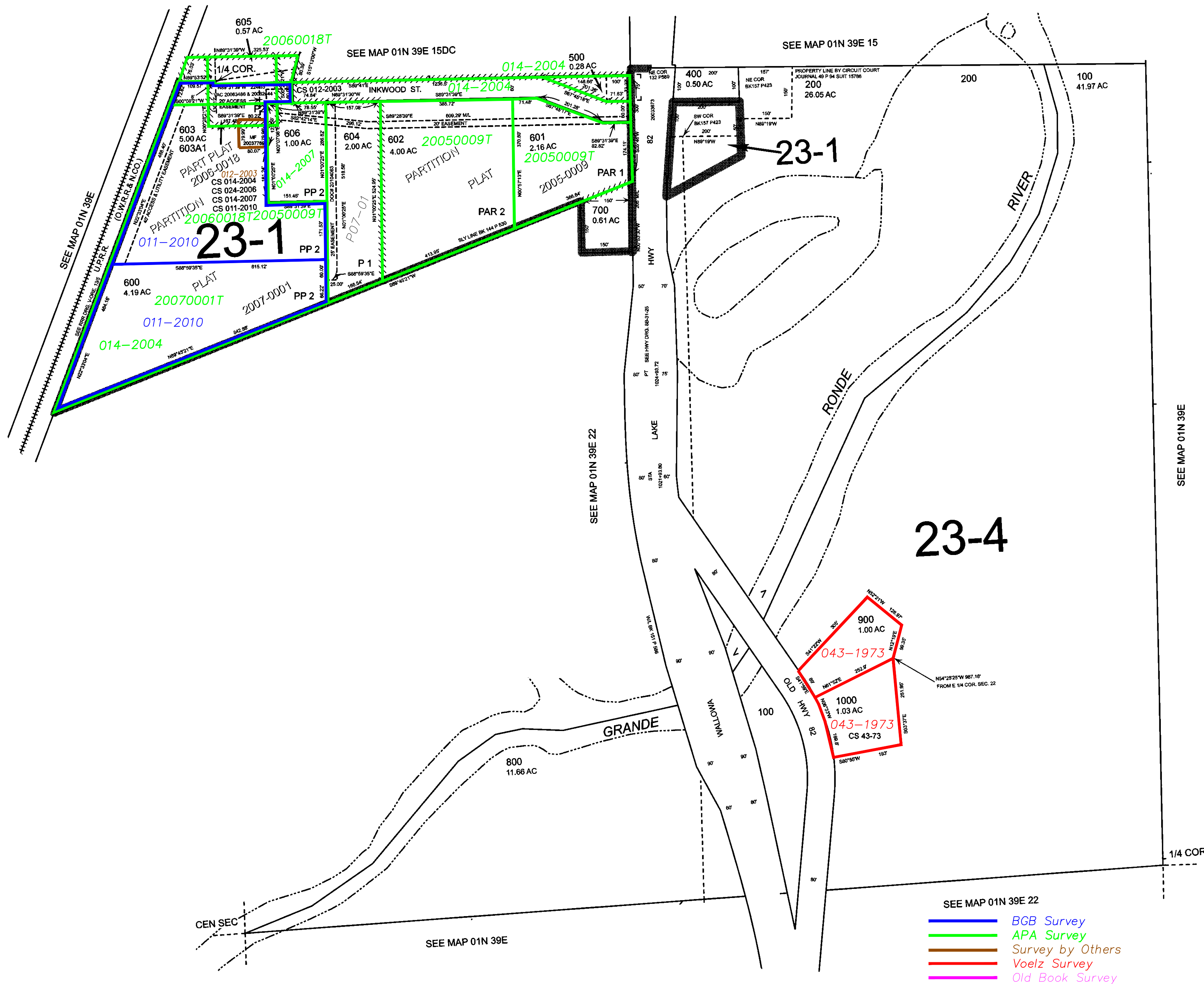
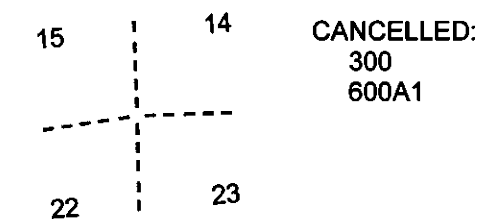


THIS MAP WAS PREPARED FOR ASSESSMENT PURPOSE ONLY



N.E. 1/4 SEC. 22 T. 1N. R. 39E. W.M.
UNION COUNTY
1" = 200'

01N39E22A
ELGIN



SEE MAP 01N 39E

Revised: SH
7/13/2012

ELGIN
01N39E22A