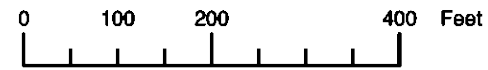


THIS MAP WAS PREPARED FOR ASSESSMENT PURPOSE ONLY

SE1/4 SECTION 29 T.02S. R.38E. W.M.

02S 38E 29D

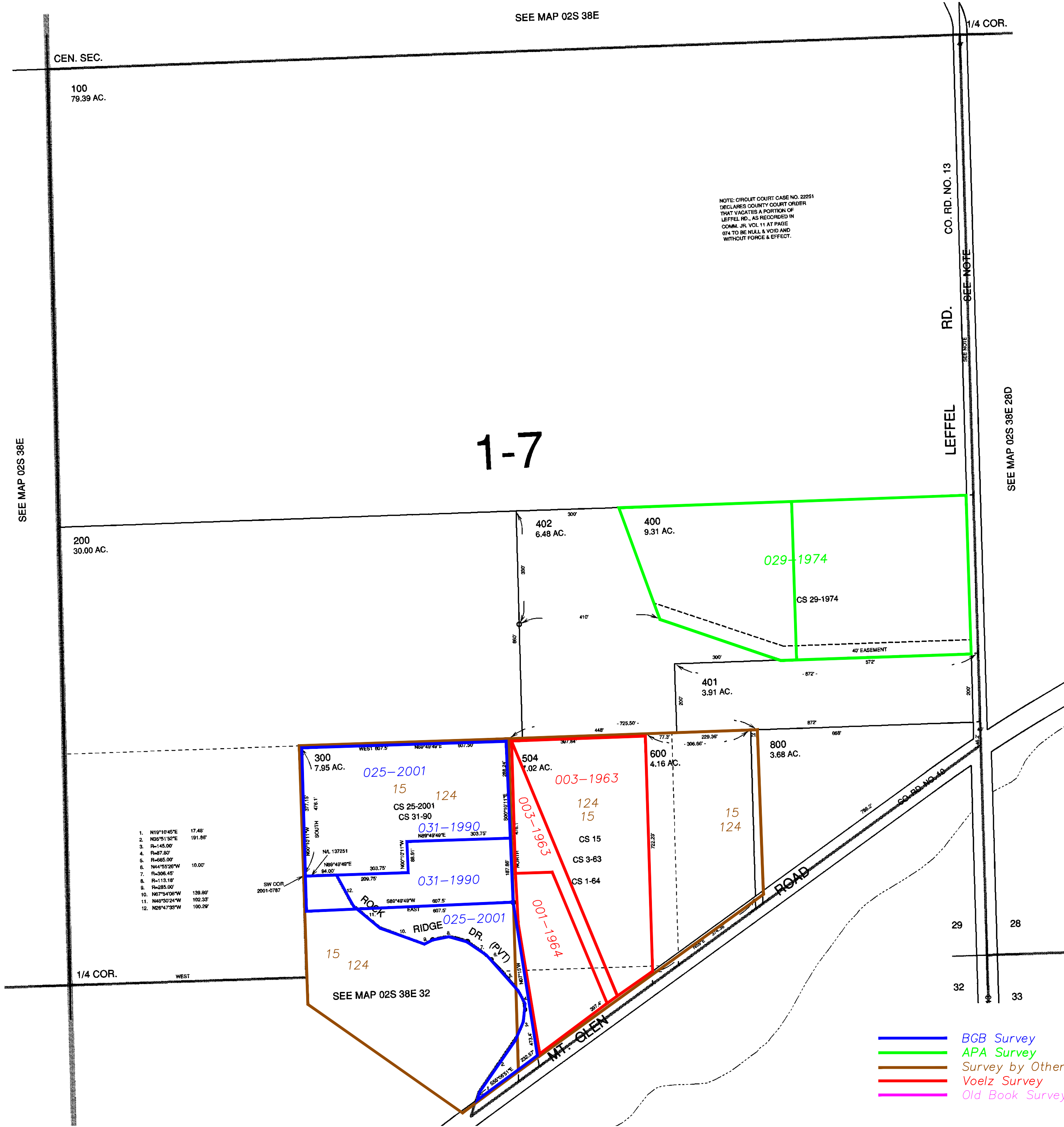


UNION COUNTY

1" = 200'

SEE MAP 02S 38E

CANCELLED NO.
301
500 THRU 503
700



1. N10°10'45"E 17.45'
2. N26°51'32"E 191.89'
3. R=145.00'
4. R=87.80'
5. R=65.00'
6. N44°53'26"W 10.00'
7. R=306.45'
8. R=113.16'
9. R=293.00'
10. N07°54'00"W 139.80'
11. N48°50'24"W 102.33'
12. N26°47'30"W 100.29'

- BGB Survey
- APA Survey
- Survey by Others
- Voelz Survey
- Old Book Survey

Revised 9C
4/5/2004

02S 38E 29D