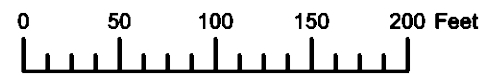


THIS MAP WAS PREPARED FOR ASSESSMENT PURPOSE ONLY

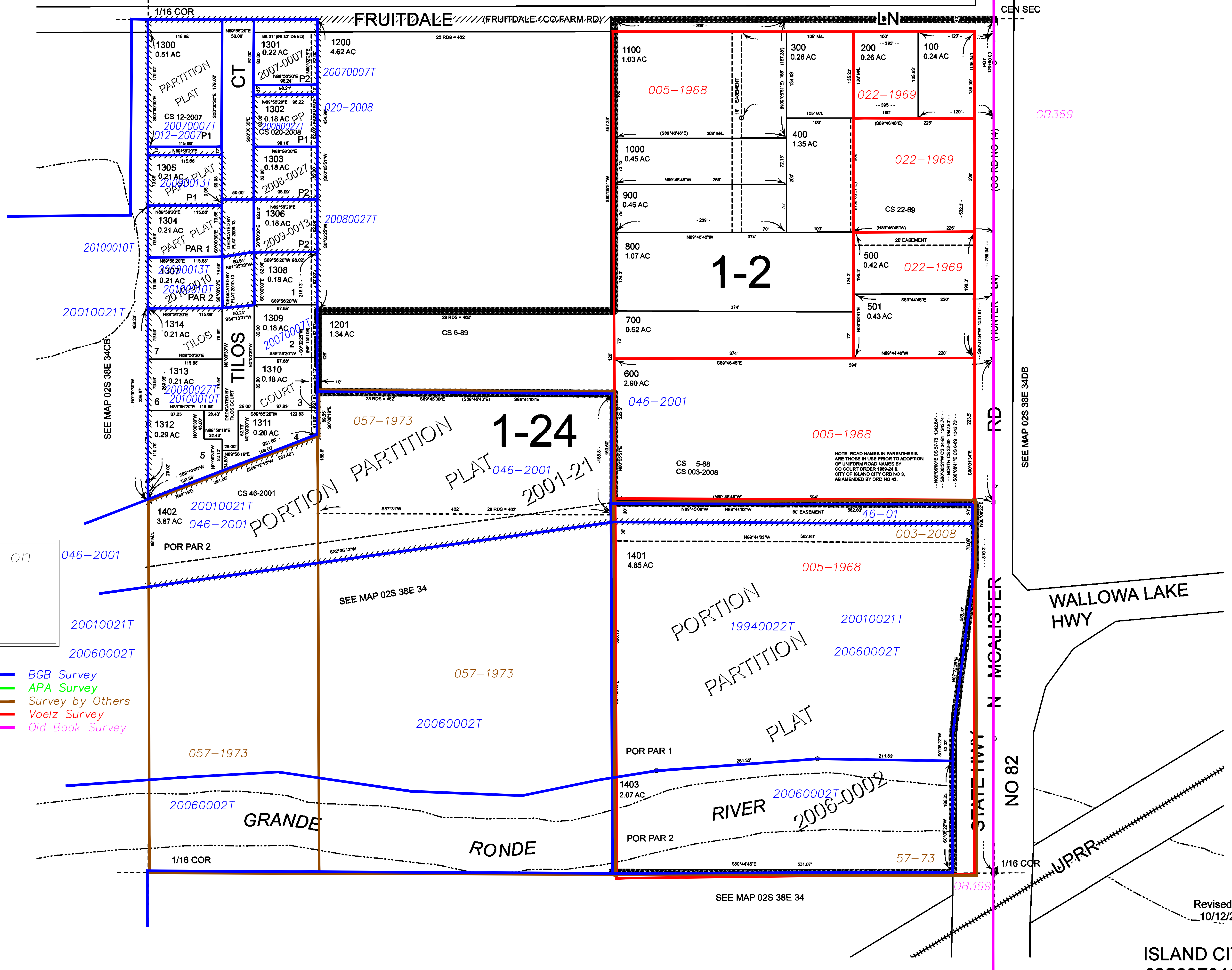


N.E. 1/4 S.W. 1/4 SEC. 34 T.2S. R.38E. W.M.
UNION COUNTY
1" = 100'

02S38E34CA
ISLAND CITY

Cancelled
1400

SEE MAP 02S 38E 34



Subdivisions on this page
TILOS COURT

- BGB Survey
- APA Survey
- Survey by Others
- Voelz Survey
- Old Book Survey

1-2

1-24

PORTION PARTITION PLAT

PORTION PARTITION PLAT

GRANDE

RONDE

WALLOWA LAKE HWY

STATE HWY N MCALISTER RD

NO 82

UPRR

SEE MAP 02S 38E 34

SEE MAP 02S 38E 34DB

Revised: SH
10/12/2015

ISLAND CITY
02S38E34CA