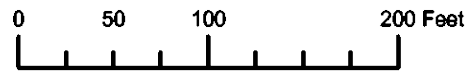
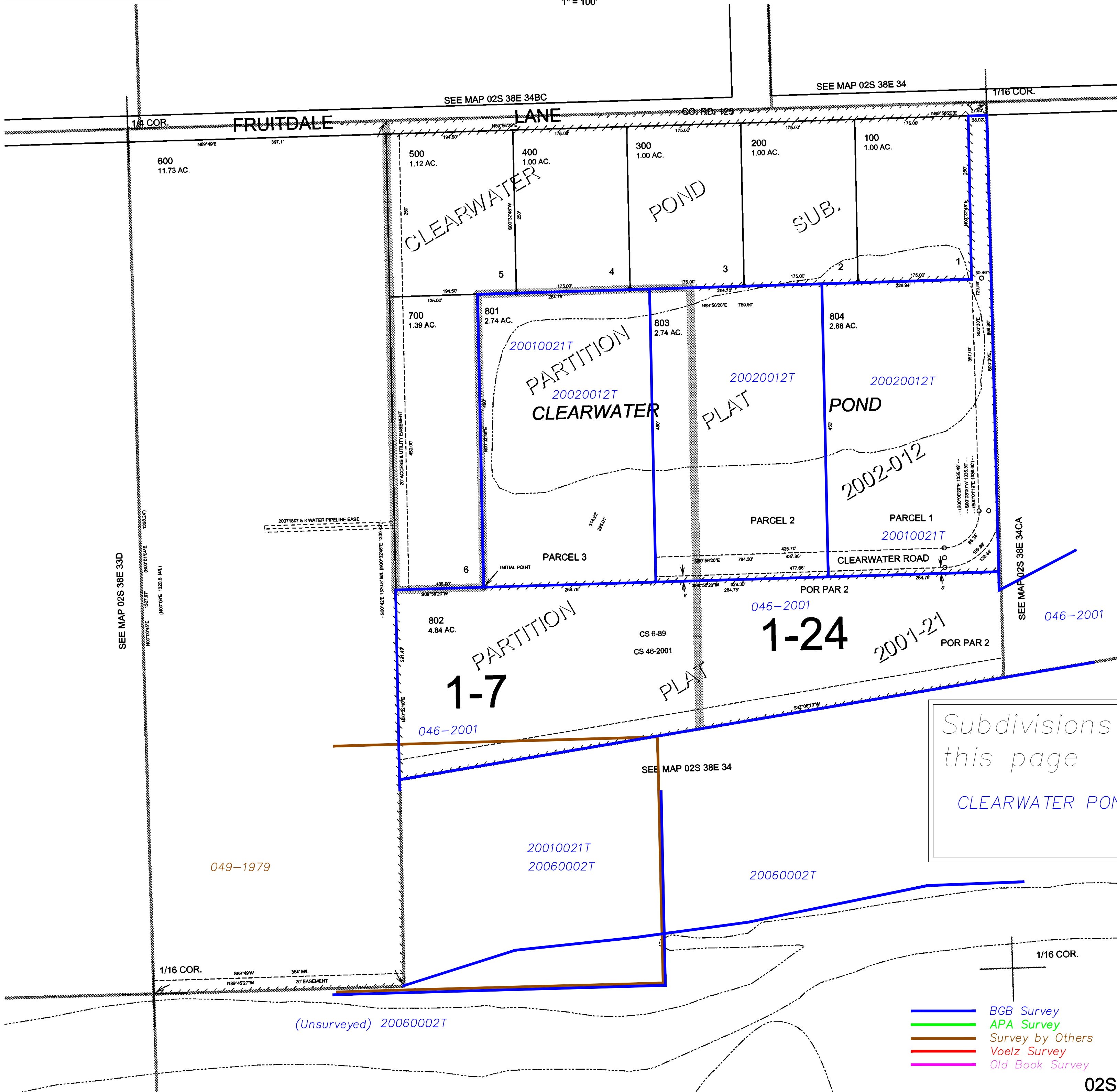


THIS MAP WAS PREPARED FOR ASSESSMENT PURPOSE ONLY



NW1/4 SW1/4 SECTION 34 T.02S. R.38E. W.M.
UNION COUNTY
1" = 100'

02S 38E 34CB



Subdivisions on this page
CLEARWATER POND

- BGB Survey
- APA Survey
- Survey by Others
- Voelz Survey
- Old Book Survey

Revised 9C
5/23/2007

02S 38E 34CB