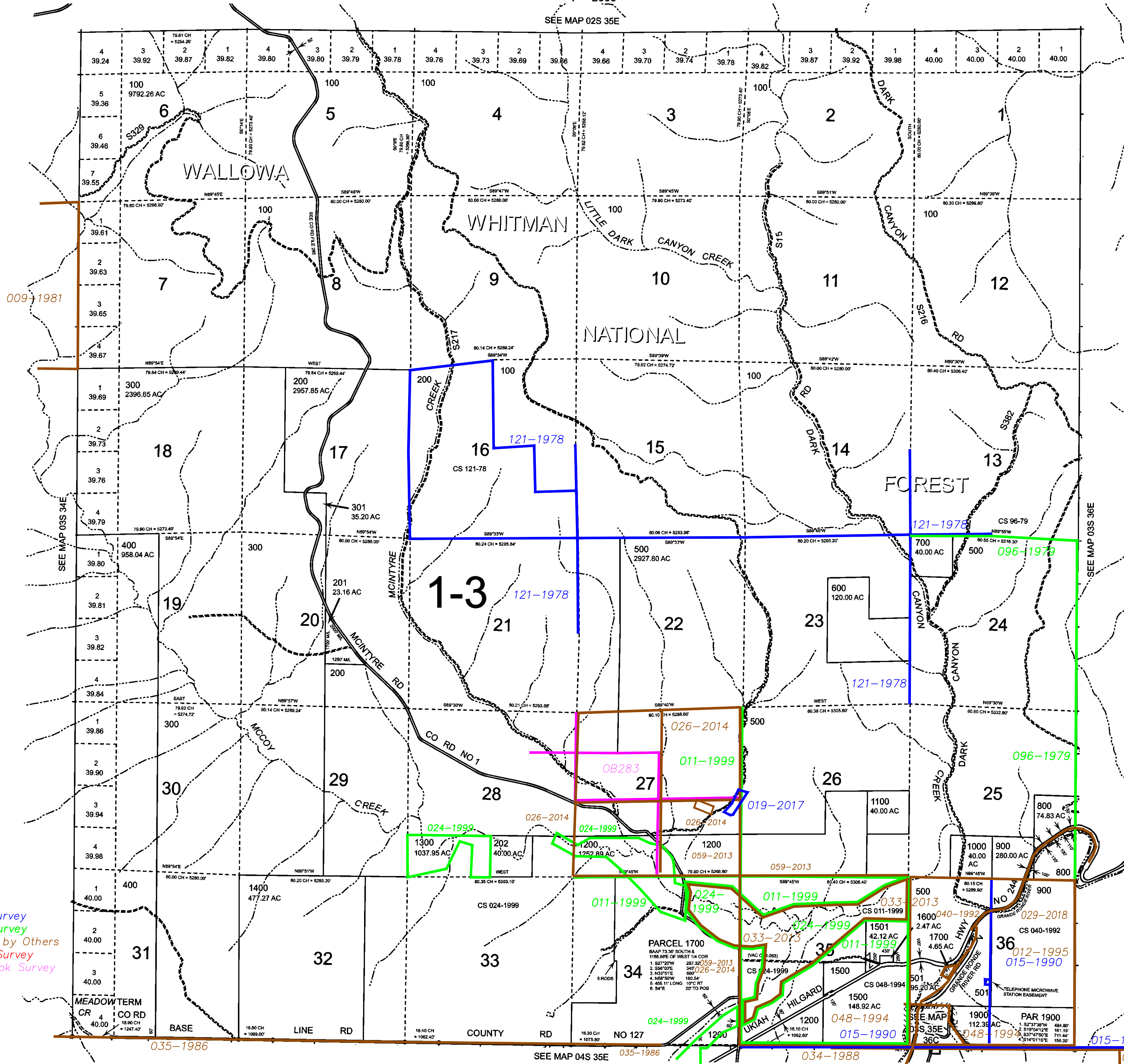


1" = 2000'

SEE MAP 02S 35E

Cancelled
500T1
1500T1
1800
1800A1 & A2
1901



- BGB Survey
- APA Survey
- Survey by Others
- Voelz Survey
- Old Book Survey

Revised: SH
12/09/2016

015-1990

034-1988

SEE MAP 04S 35E

035-1986

034-1988

035-1986

MEADOW TERM
CR 40.00
BASE

1400
477.27 AC

32

COUNTY RD

NO 127

PARCEL 1700
BAAP 73.36' SOUTH &
1180.88' OF WEST 1/4 COR
1. S27°20'W 287.85' 059-2013
2. S88°10'E 345' 026-2014
3. N33°51'E 686'
4. N68°50'W 160.54'
5. 465.11' LONG 10° C RT
6. S41E 22' TO POB

1500
148.92 AC

1500

1500
42.12 AC

1500

1700
4.65 AC

1700

1900
112.36 AC

1900

PAR 1900

1900

1000
280.00 AC

1000

900
74.83 AC

900

800
40.00 AC

800

1100
40.00 AC

1100

700
40.00 AC

700

500
2927.80 AC

500

200
23.16 AC

200

200
2957.85 AC

200

300
2396.65 AC

300

400
958.04 AC

400

1300
1037.95 AC

1300

1200
1252.89 AC

1200

202
40.00 AC

202

1400
477.27 AC

1400

400
40.00 AC

400

1300
1037.95 AC

1300

202
40.00 AC

202

1400
477.27 AC

1400

400
958.04 AC

400

009-1981

SEE MAP 03S 34E

SEE MAP 03S 36E

SEE MAP 04S 35E

035-1986

034-1988

035-1986

MEADOW TERM
CR 40.00
BASE

1400
477.27 AC

32

COUNTY RD

NO 127

PARCEL 1700
BAAP 73.36' SOUTH &
1180.88' OF WEST 1/4 COR
1. S27°20'W 287.85' 059-2013
2. S88°10'E 345' 026-2014
3. N33°51'E 686'
4. N68°50'W 160.54'
5. 465.11' LONG 10° C RT
6. S41E 22' TO POB

1500
148.92 AC

1500

1500
42.12 AC

1500

1700
4.65 AC

1700

1900
112.36 AC

1900

PAR 1900

1900

1000
280.00 AC

1000

900
74.83 AC

900

800
40.00 AC

800

1100
40.00 AC

1100

700
40.00 AC

700

500
2927.80 AC

500

200
23.16 AC

200

200
2957.85 AC

200

300
2396.65 AC

300

400
958.04 AC

400

1300
1037.95 AC

1300

1200
1252.89 AC

1200

202
40.00 AC

202

1400
477.27 AC

1400

400
40.00 AC

400

1300
1037.95 AC

1300

202
40.00 AC

202

1400
477.27 AC

1400

400
958.04 AC

400