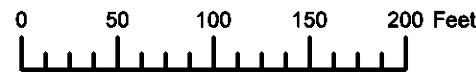


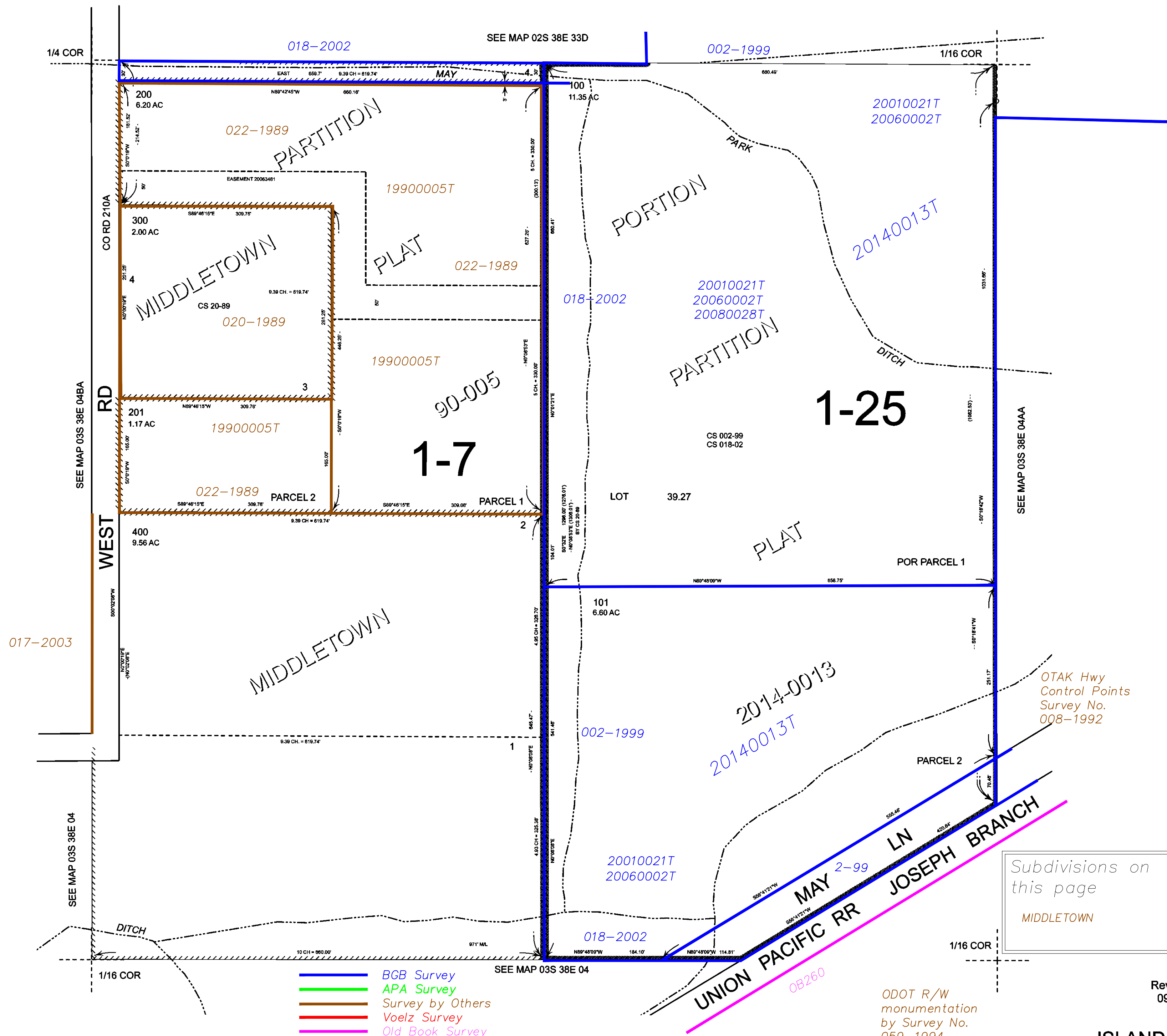
THIS MAP WAS PREPARED FOR ASSESSMENT PURPOSE ONLY



N.W.1/4 N.E.1/4 SEC.4 T.3S. R.38E. W.M.
UNION COUNTY
1" = 100'

03S38E04AB
ISLAND CITY

Cancelled
500



- BGB Survey
- APA Survey
- Survey by Others
- Voelz Survey
- Old Book Survey

Subdivisions on this page
MIDDLETOWN

ODOT R/W
monumentation
by Survey No.
059-1994

Revised: SH
09/15/2014

ISLAND CITY
03S38E04AB