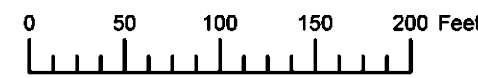


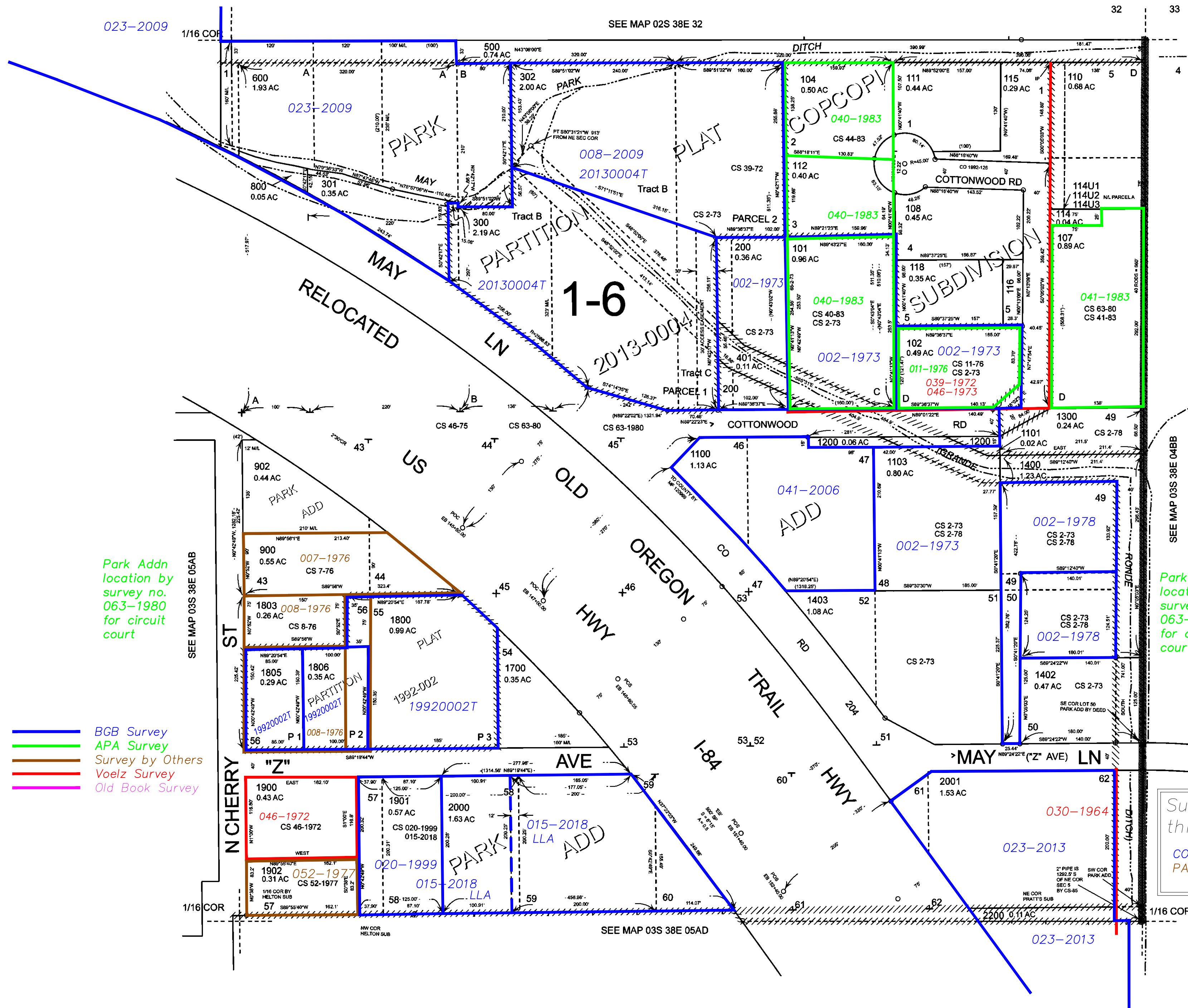
THIS MAP WAS PREPARED FOR ASSESSMENT PURPOSE ONLY



N.E. 1/4 N.E. 1/4 SEC. 5 T.3S. R.38E. W.M. UNION COUNTY 1" = 100'

03S38E05AA

- Cancelled
- 100
- 103
- 105
- 106
- 109
- 113
- 114U4
- 117
- 119
- 140
- 140U4
- 141
- 1404
- 1500
- 1600
- 1701
- 1801
- 1802
- 1804
- 2002
- 2100



Park Addn location by survey no. 063-1980 for circuit court

Park Addn location by survey no. 063-1980 for circuit court

- BGB Survey
- APA Survey
- Survey by Others
- Voelz Survey
- Old Book Survey

Subdivisions on this page
 COPCOPI SUBDIVISION
 PARK ADDITION

Revised: MA 03/07/2019

03S38E05AA