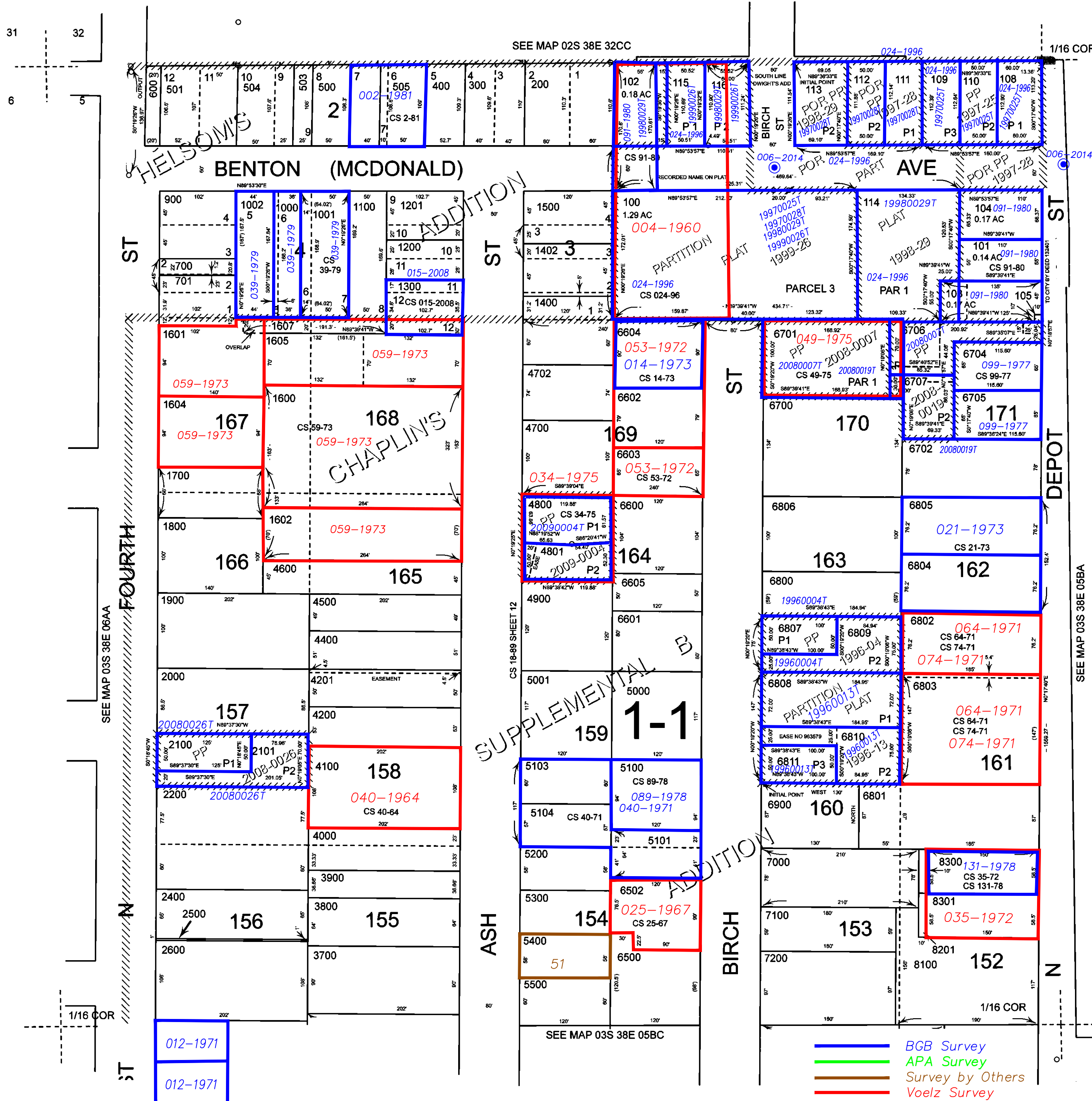


- Cancelled
- 106
- 107
- 502
- 506
- 800
- 1003
- 1401
- 1603
- 1606
- 2300
- 2700 THRU
- 3600
- 4300
- 4701
- 5102
- 5600 THRU
- 6400
- 6501
- 6703
- 6803U1
- 6803U2
- 7001
- 7300 THRU
- 8001
- 8200



Subdivisions on this page
 CHAPLIN'S ADDITION
 SUPPLEMENTAL PLAT "B"
 HELSON'S ADDITION

Revised: SH
 06/27/2014