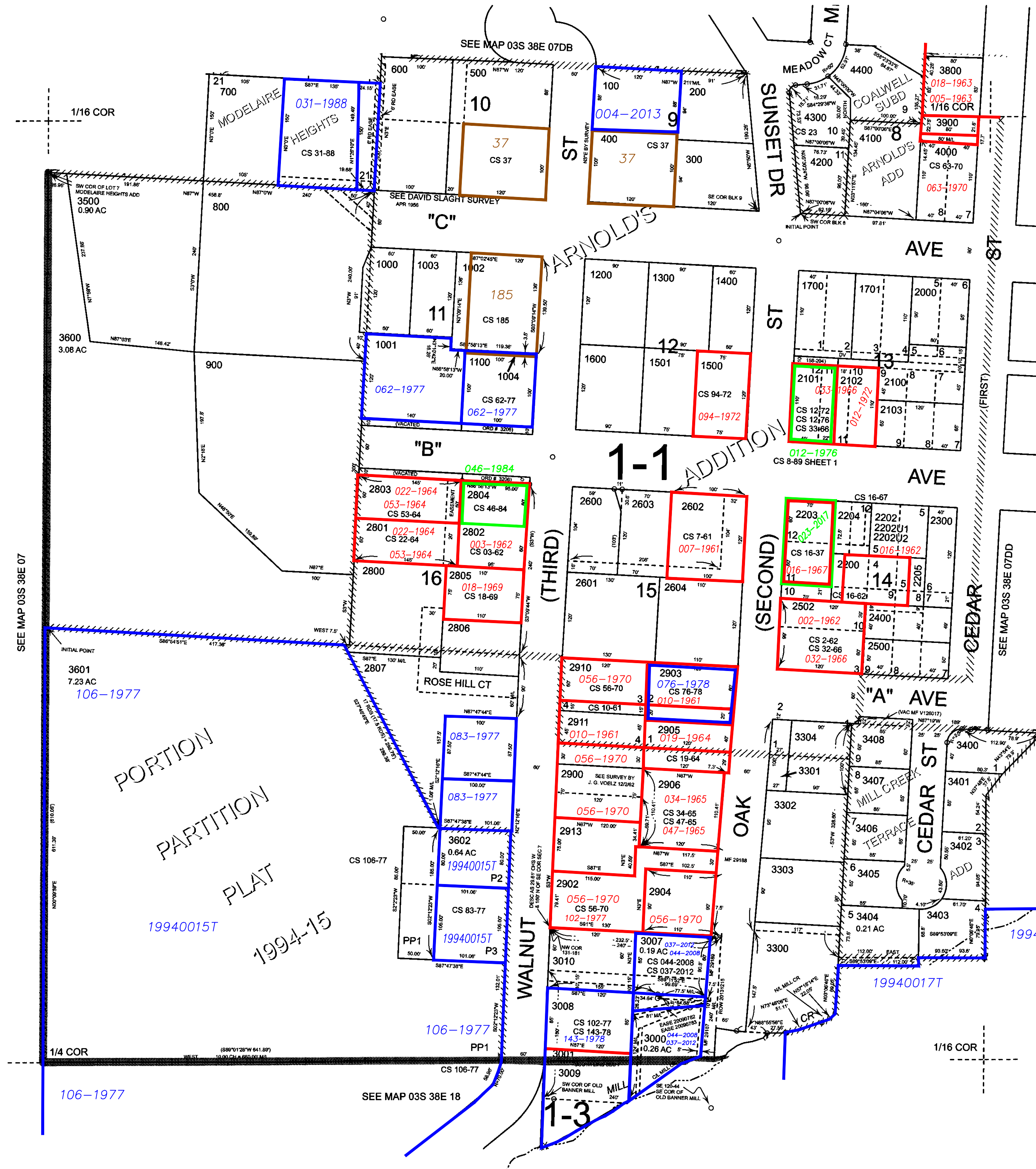




1" = 100'



- Cancelled
- 100U1
- 100U2
- 400U1
- 400U2
- 701
- 702
- 801
- 1001A1
- 1005
- 1800
- 1900
- 2001
- 2104
- 2201
- 2501
- 2605
- 2700
- 2808
- 2809
- 2810
- 2901
- 2907
- 2908
- 2909
- 3002 THRU
- 3006
- 3100
- 3200
- 3603
- 3700

Subdivisions on This Page

ARNOLD'S ADDITION
 COALWELL SUBDIVISION
 MODELAIRE HEIGHTS
 MILL CREEK TERRACE

- BGB Survey
- APA Survey
- Survey by Others
- Voelz Survey
- Old Book Survey

Revised: SH 02/05/2016