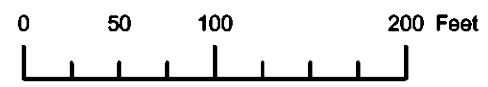


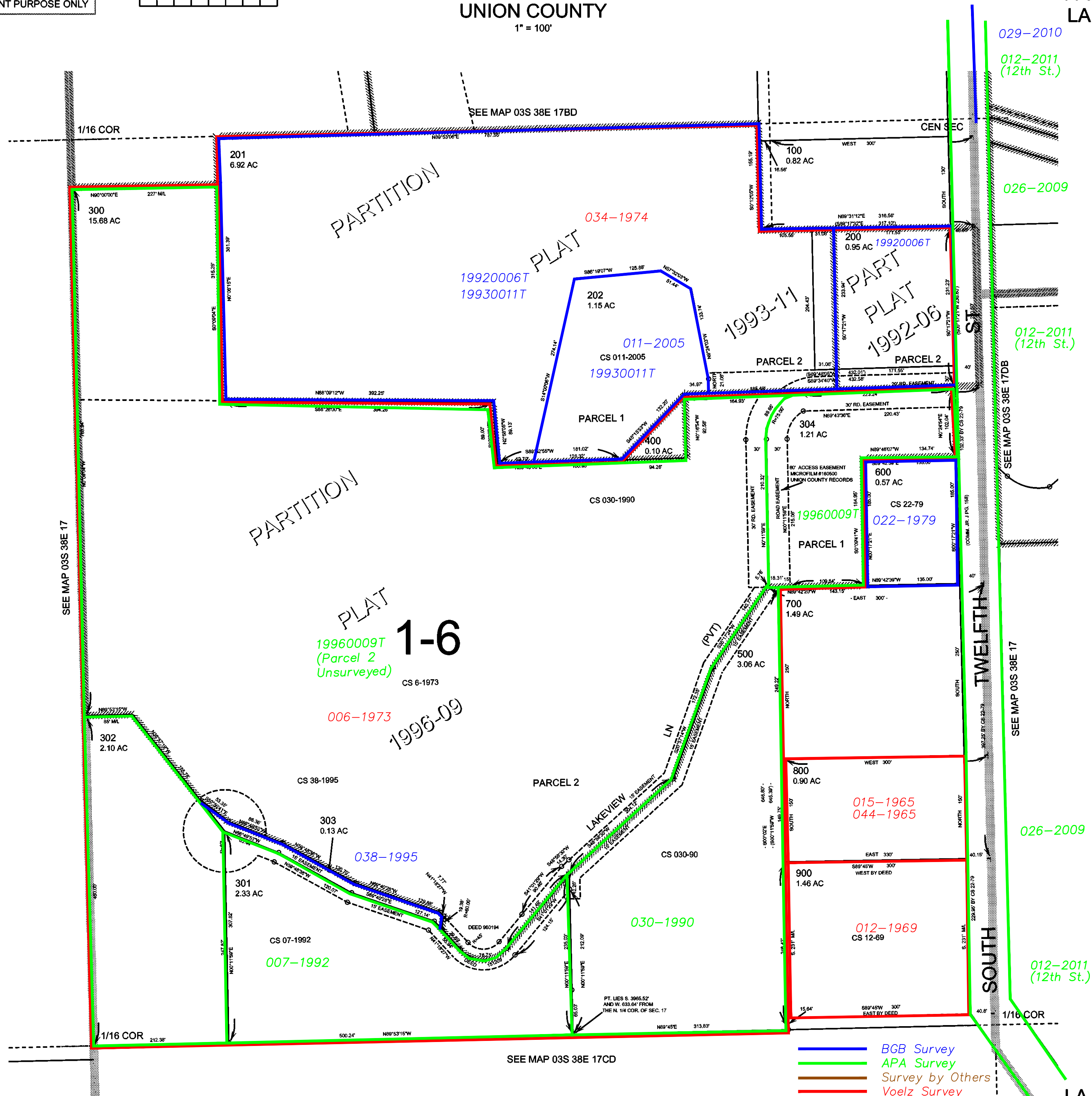
THIS MAP WAS PREPARED FOR ASSESSMENT PURPOSE ONLY



N.E.1/4 S.W.1/4 SEC.17 T.3S. R.38E. W.M. UNION COUNTY
1" = 100'

03S38E17CA
LA GRANDE

CANCELLED:



029-2010

012-2011
(12th St.)

026-2009

012-2011
(12th St.)

SEE MAP 03S 38E 17

026-2009

012-2011
(12th St.)

Revised: bc
6/29/2009

- BGB Survey
- APA Survey
- Survey by Others
- Voelz Survey
- Old Book Survey

LA GRANDE
03S38E17CA