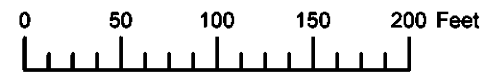


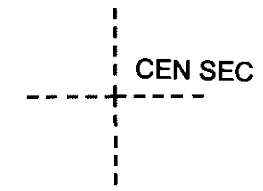
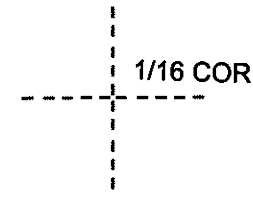
THIS MAP WAS PREPARED FOR ASSESSMENT PURPOSE ONLY



N.E. 1/4 S.W. 1/4 SEC. 24 T.3S. R.38E. W.M.
UNION COUNTY
1" = 100'

03S38E24CA

Cancelled
200A1

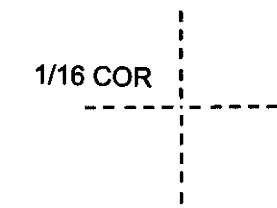
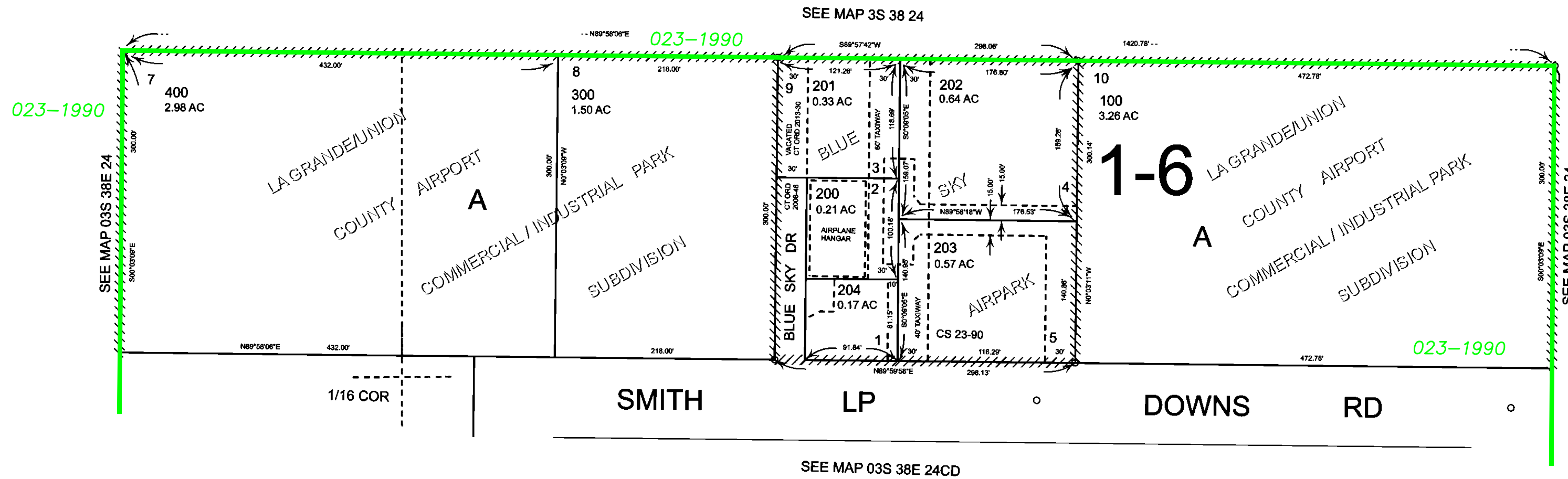


Subdivisions on
This Page

LA GRANDE/UNION COUNTY
AIRPORT COMMERCIAL/INDUSTRIAL
PARK SUBDIVISION

BLUE SKY AIRPARK

- BGB Survey
- APA Survey
- Survey by Others
- Voelz Survey
- Old Book Survey



Revised: SH
12/23/2013

03S38E24CA