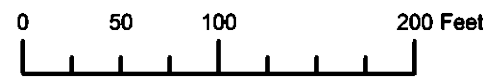
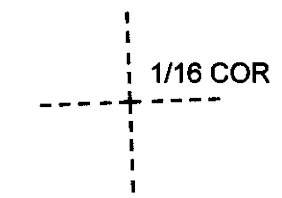
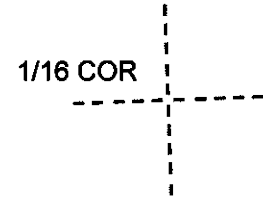


THIS MAP WAS PREPARED FOR ASSESSMENT PURPOSE ONLY



S.W.1/4 S.E.1/4 SEC.24 T.3S. R.38E. W.M.
UNION COUNTY
1" = 100'

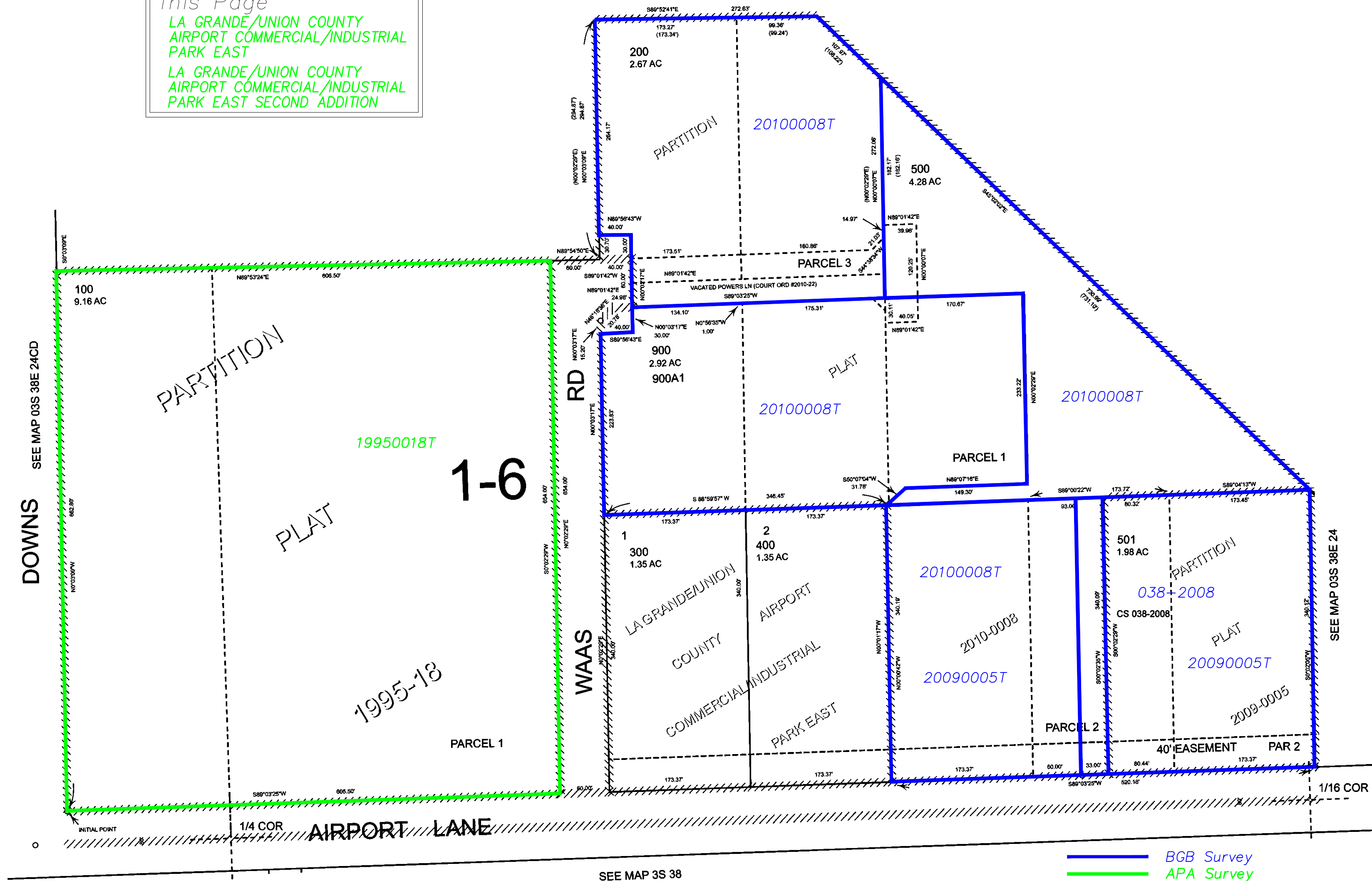
03S38E24DC



- CANCELLED:
- 201
 - 202
 - 203
 - 203A1
 - 204
 - 600
 - 700
 - 800

Subdivisions on This Page

- LA GRANDE/UNION COUNTY AIRPORT COMMERCIAL/INDUSTRIAL PARK EAST
- LA GRANDE/UNION COUNTY AIRPORT COMMERCIAL/INDUSTRIAL PARK EAST SECOND ADDITION



- BGB Survey
- APA Survey
- Survey by Others
- Voelz Survey
- Old Book Survey

Revised: MA
5/16/2011

03S38E24DC