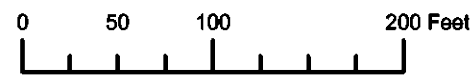


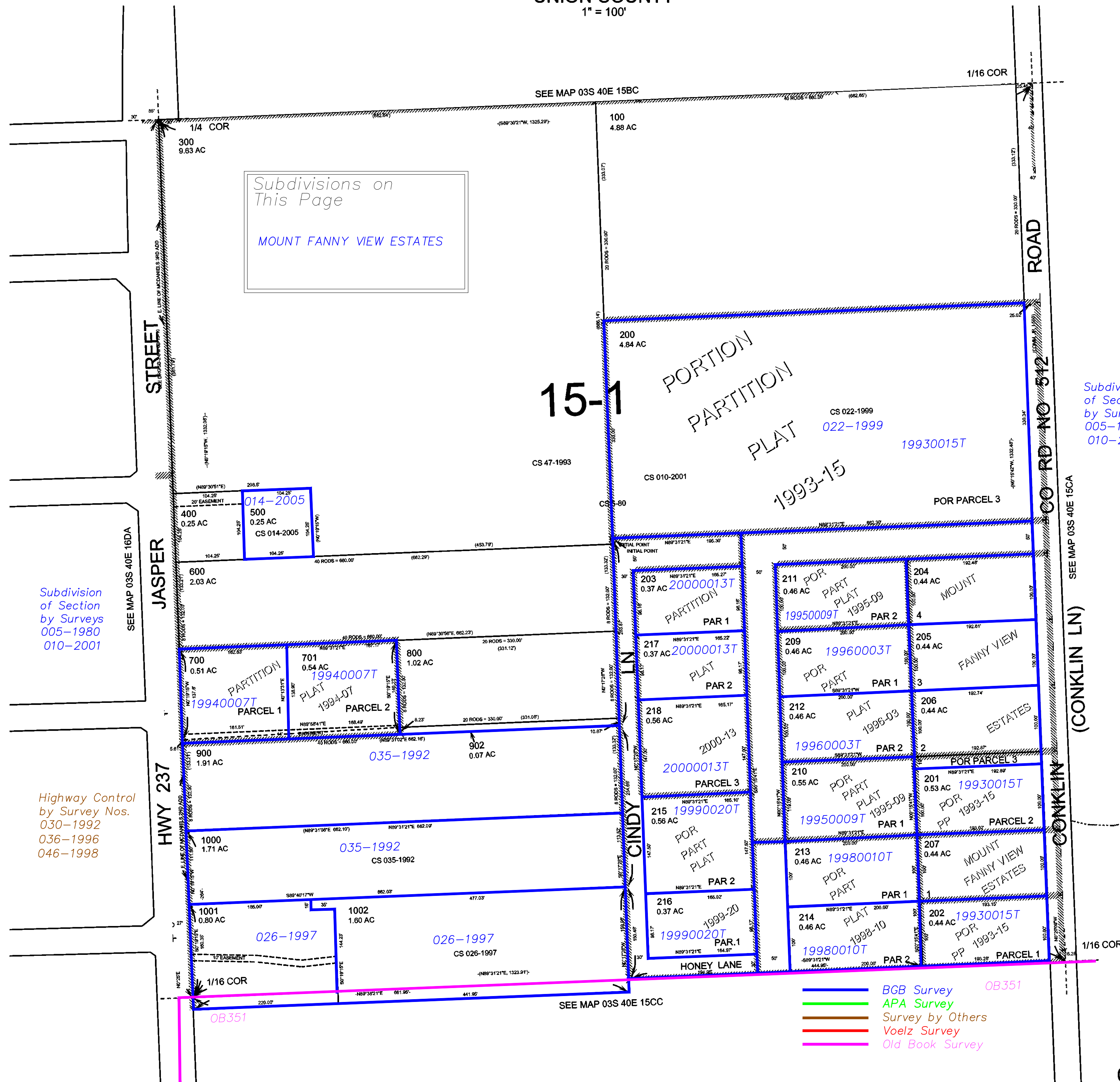
THIS MAP WAS PREPARED FOR ASSESSMENT PURPOSE ONLY



N.W. 1/4 S.W. 1/4 SEC. 15 T.3S. R.40E. W.M. UNION COUNTY 1" = 100'

03S40E15CB COVE

CANCELLED: 208 901



Subdivisions on This Page MOUNT FANNY VIEW ESTATES

15-1

PORTION PARTITION PLAT 1993-15

Subdivision of Section by Surveys 005-1980 010-2001

Subdivision of Section by Surveys 005-1980 010-2001

Highway Control by Survey Nos. 030-1992 036-1996 046-1998

- BGB Survey OB351
- APA Survey
- Survey by Others
- Voelz Survey
- Old Book Survey

Revised: MRT 7/26/2010 COVE 03S40E15CB