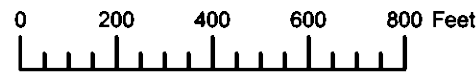


THIS MAP WAS PREPARED FOR ASSESSMENT PURPOSE ONLY

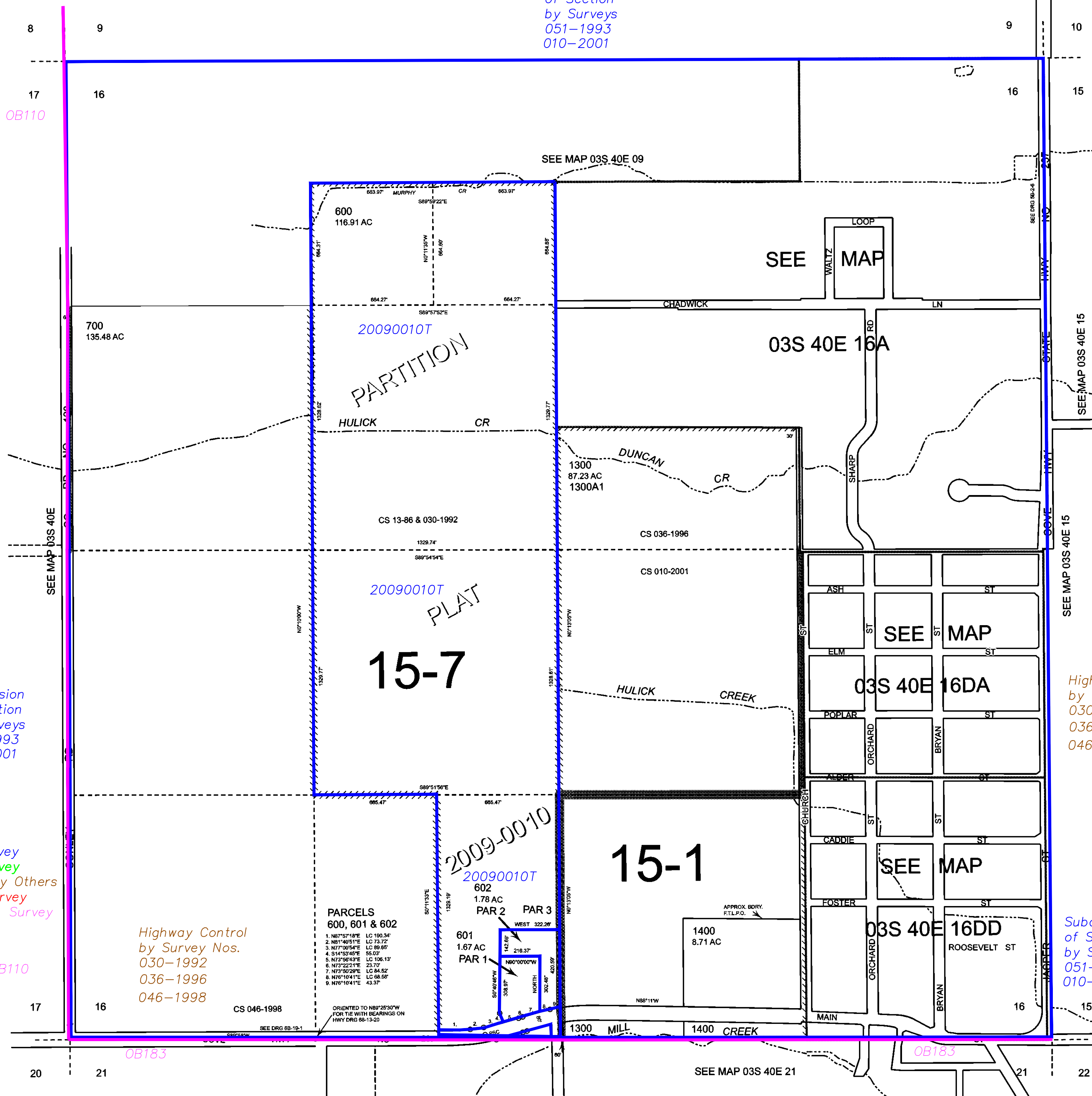


SECTION 16 T.3S. R.40E. W.M. UNION COUNTY 1" = 400'

03S40E16 COVE

Cancelled 100 THRU 501 800 THRU 1204

Subdivision of Section by Surveys 051-1993 010-2001



Subdivision of Section by Surveys 051-1993 010-2001

Highway Control by Survey Nos. 030-1992 036-1996 046-1998

Subdivision of Section by Surveys 051-1993 010-2001

- BGB Survey
- APA Survey
- Survey by Others
- Voelz Survey
- Old Book Survey

Highway Control by Survey Nos. 030-1992 036-1996 046-1998

PARCELS 600, 601 & 602

1.	N87°57'19"E	LC 190.36
2.	N81°46'51"E	LC 13.72
3.	N77°00'54"E	LC 89.85
4.	S14°52'40"E	55.03'
5.	N73°56'43"E	LC 106.13'
6.	N73°22'21"E	23.70'
7.	N73°50'29"E	LC 84.52'
8.	N78°10'41"E	LC 68.55'
9.	N78°10'41"E	43.37'

ORIENTED TO N89°28'30"W FOR TIE WITH BEARINGS ON HWY DRG 88-13-20

Revised: SH 07/06/2015

COVE 03S40E16