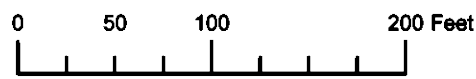
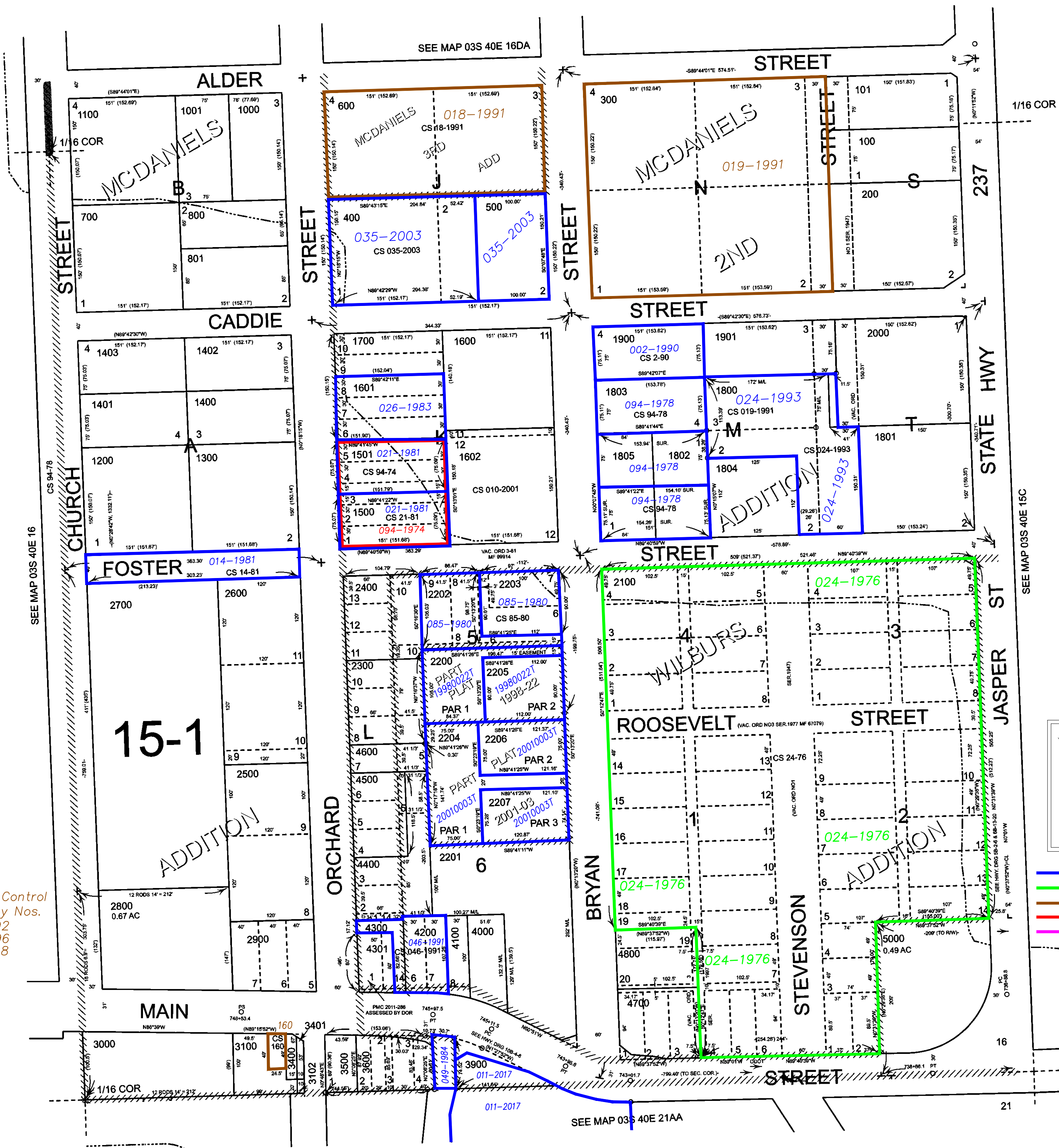


THIS MAP WAS PREPARED FOR ASSESSMENT PURPOSE ONLY



S.E. 1/4 S.E. 1/4 SEC. 16 T.3S. R.40E. W.M.
UNION COUNTY
1" = 100'

03S40E16DD
COVE



- CANCELLED:
- 900
 - 901
 - 1603
 - 1604
 - 1605
 - 2001
 - 3101
 - 3200
 - 3300
 - 3601
 - 3700
 - 3800
 - 4401
 - 4900
 - 5100

Highway Control
by Survey Nos.
030-1992
036-1996
046-1998

Highway Control
by Survey Nos.
030-1992
036-1996
046-1998

Subdivisions on
This Page

- MCDANIEL'S ADDITION
- MCDANIEL'S SECOND ADDITION
- MCDANIEL'S THIRD ADDITION
- WILBUR'S ADDITION

- BGB Survey
- APA Survey
- Survey by Others
- Voelz Survey
- Old Book Survey

Revised: SH
8/29/2012

COVE
03S40E16DD