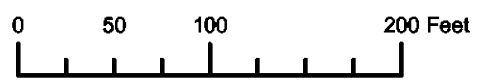
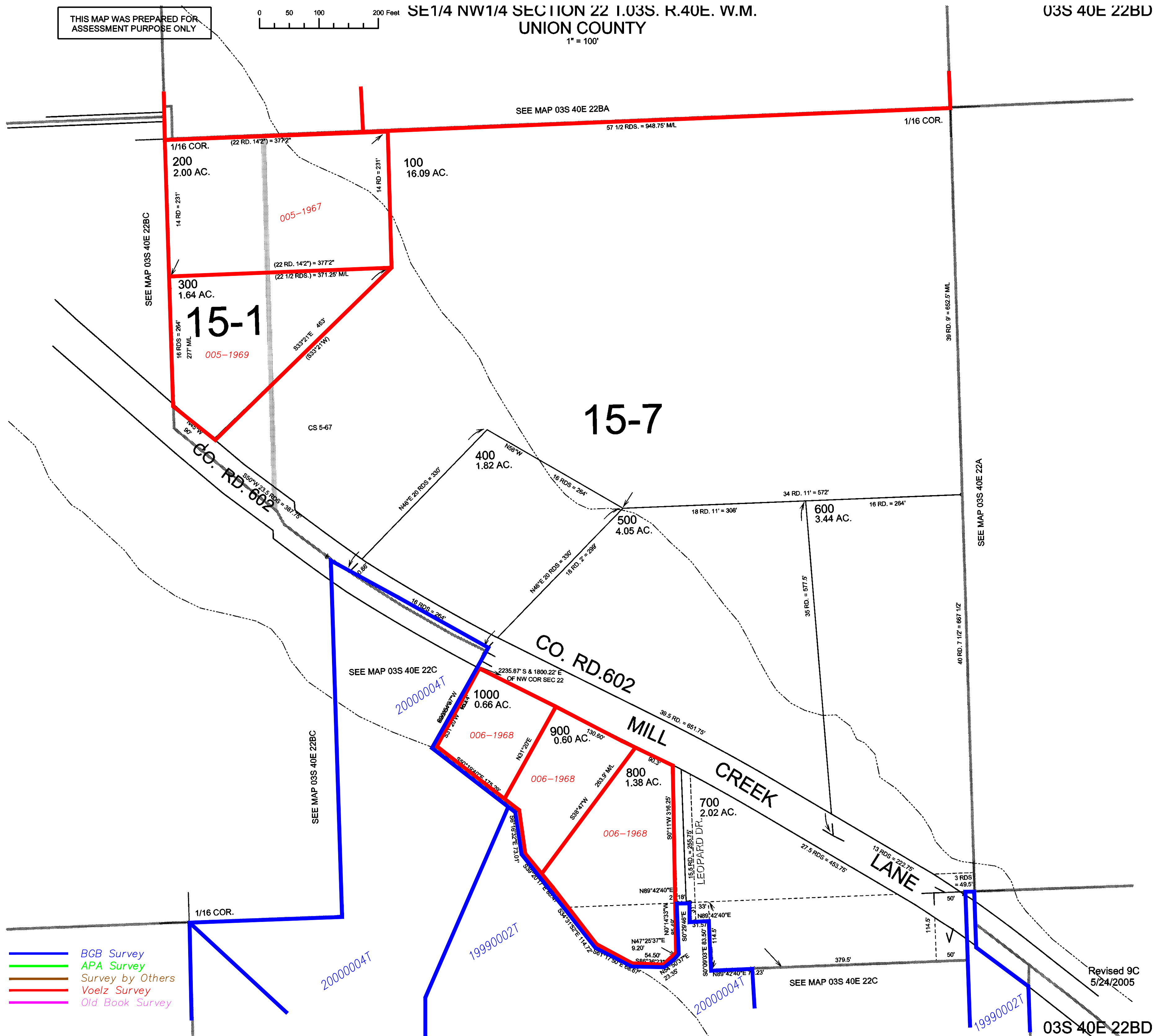


THIS MAP WAS PREPARED FOR ASSESSMENT PURPOSE ONLY



SE1/4 NW1/4 SECTION 22 T.03S. R.40E. W.M. UNION COUNTY 1" = 100'

03S 40E 22BD



- BCB Survey
- APA Survey
- Survey by Others
- Voelz Survey
- Old Book Survey

Revised 9C 5/24/2005

03S 40E 22BD