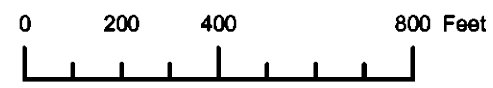


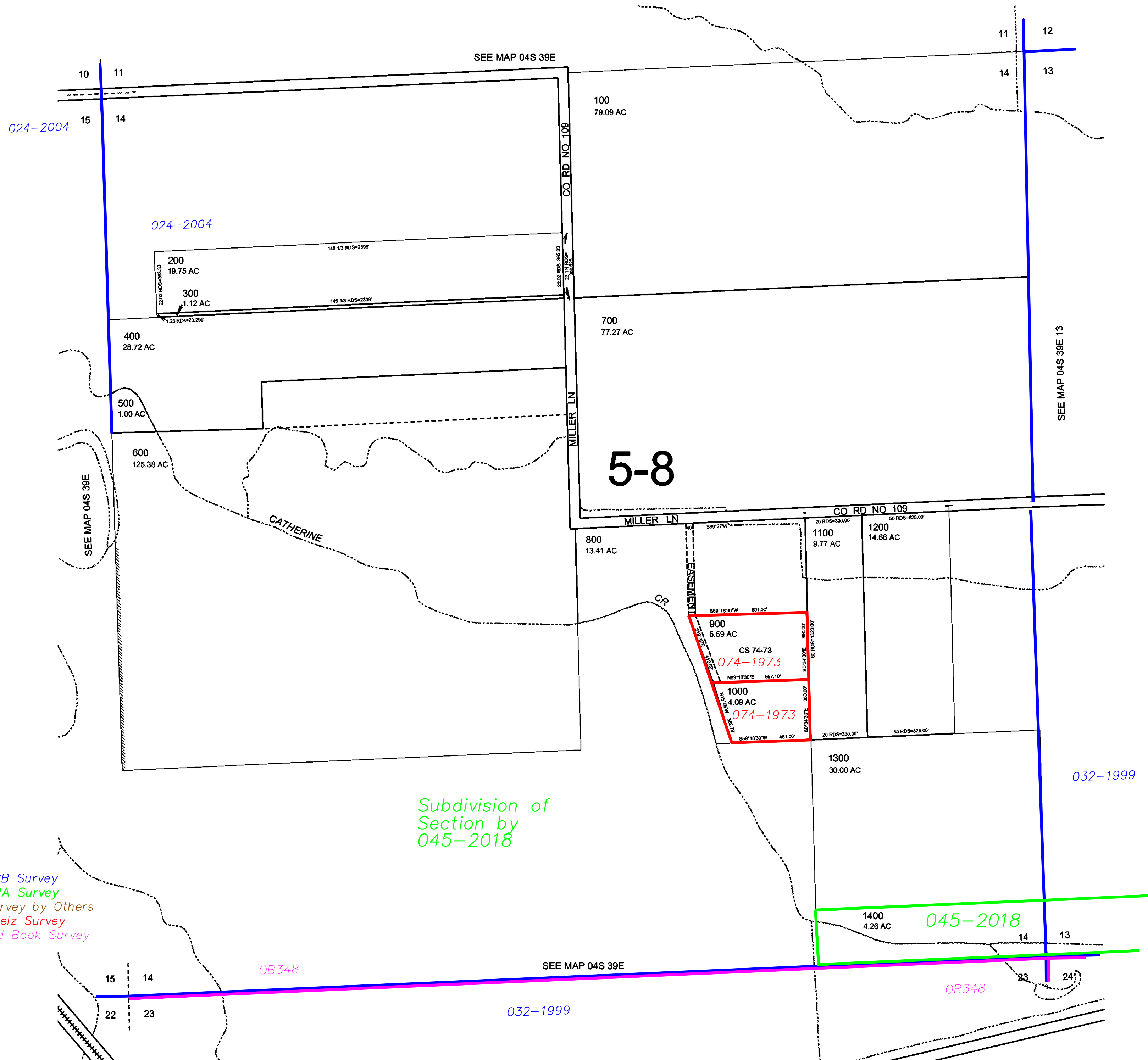
THIS MAP WAS PREPARED FOR ASSESSMENT PURPOSE ONLY



SECTION 14 T.4S. R.39E. W.M.  
UNION COUNTY  
1" = 400'

04S39E14  
UNION

CANCELLED:  
5000



Subdivision of  
Section by  
045-2018

- BGB Survey
- APA Survey
- Survey by Others
- Voelz Survey
- Old Book Survey

Revised:bc  
1/22/2010

UNION  
04S39E14