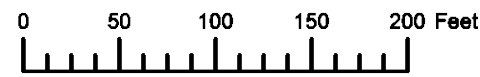


THIS MAP WAS PREPARED FOR ASSESSMENT PURPOSE ONLY



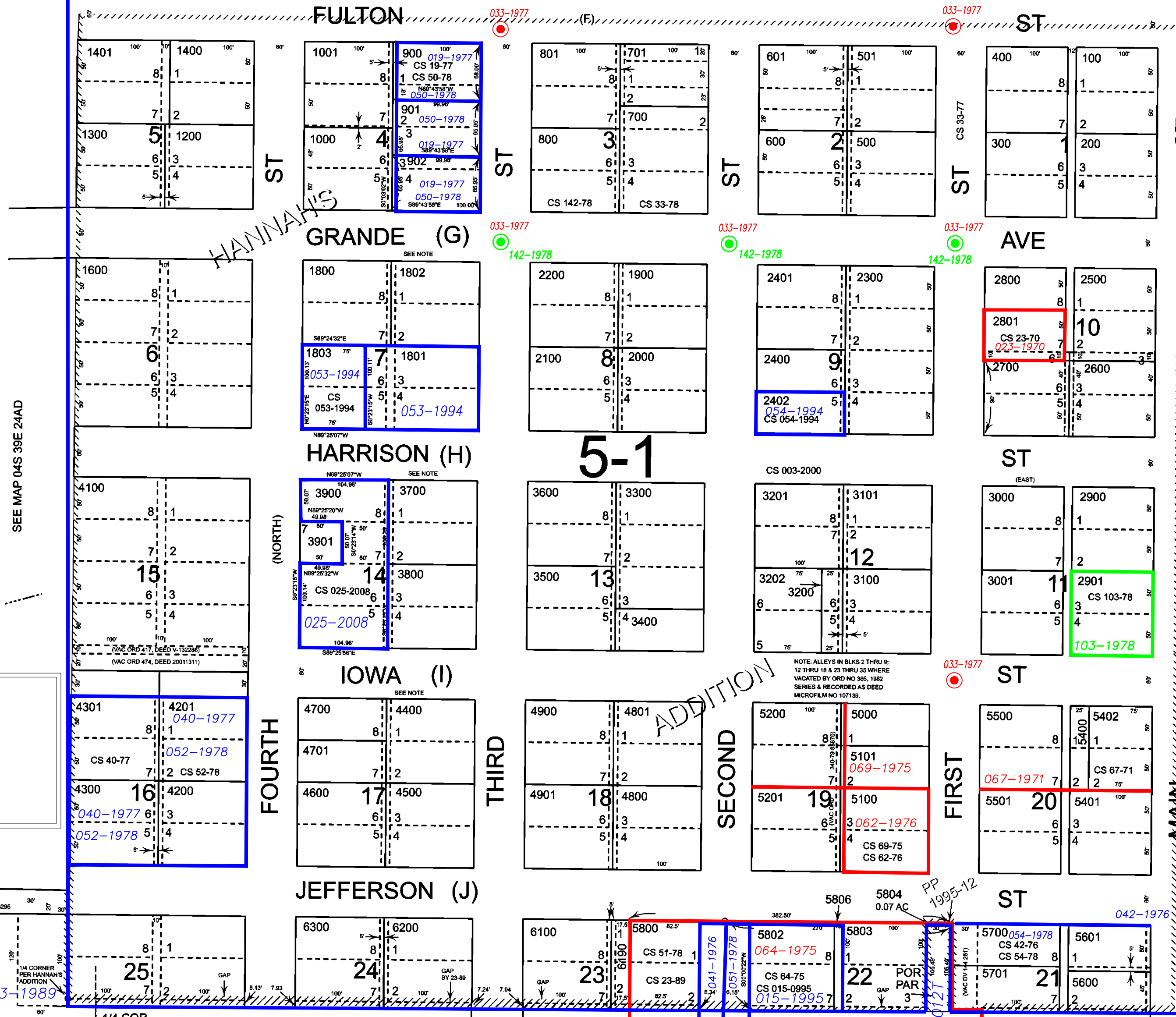
S.W. 1/4 N.W. 1/4 SEC. 19 T.4S. R.40E. W.M.
UNION COUNTY
1" = 100'

04S40E19BC
UNION

Cancelled
602
1002
1100
1500
1700
1701
2802
4000
5300
5801
5805
5900
6000
6400

023-1989

SEE MAP 04S 40E 19BB



SEE MAP 04S 39E 24AD

SEE MAP 04S 40E 19BD

Subdivisions on
This Page
HANNAH'S ADDITION

- BGB Survey
- APA Survey
- Survey by Others
- Voelz Survey
- Old Book Survey

ODOT Control
Pt ties by
Survey Nos.
012-1992
054-1998

ODOT Control
Pt ties by
Survey Nos.
012-1992
054-1998

NOTE: ALLEYS IN BKS 2 THRU 9:
12 THRU 18 & 23 THRU 35 WHERE
VACATED BY ORD NO 385, 1982
SERIES & RECORDED AS DEED
MICROFILM NO 107138.

023-1989

1/16
COR

Revised: SH
10/21/2015

UNION
04S40E19BC