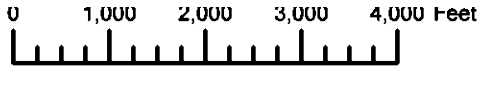
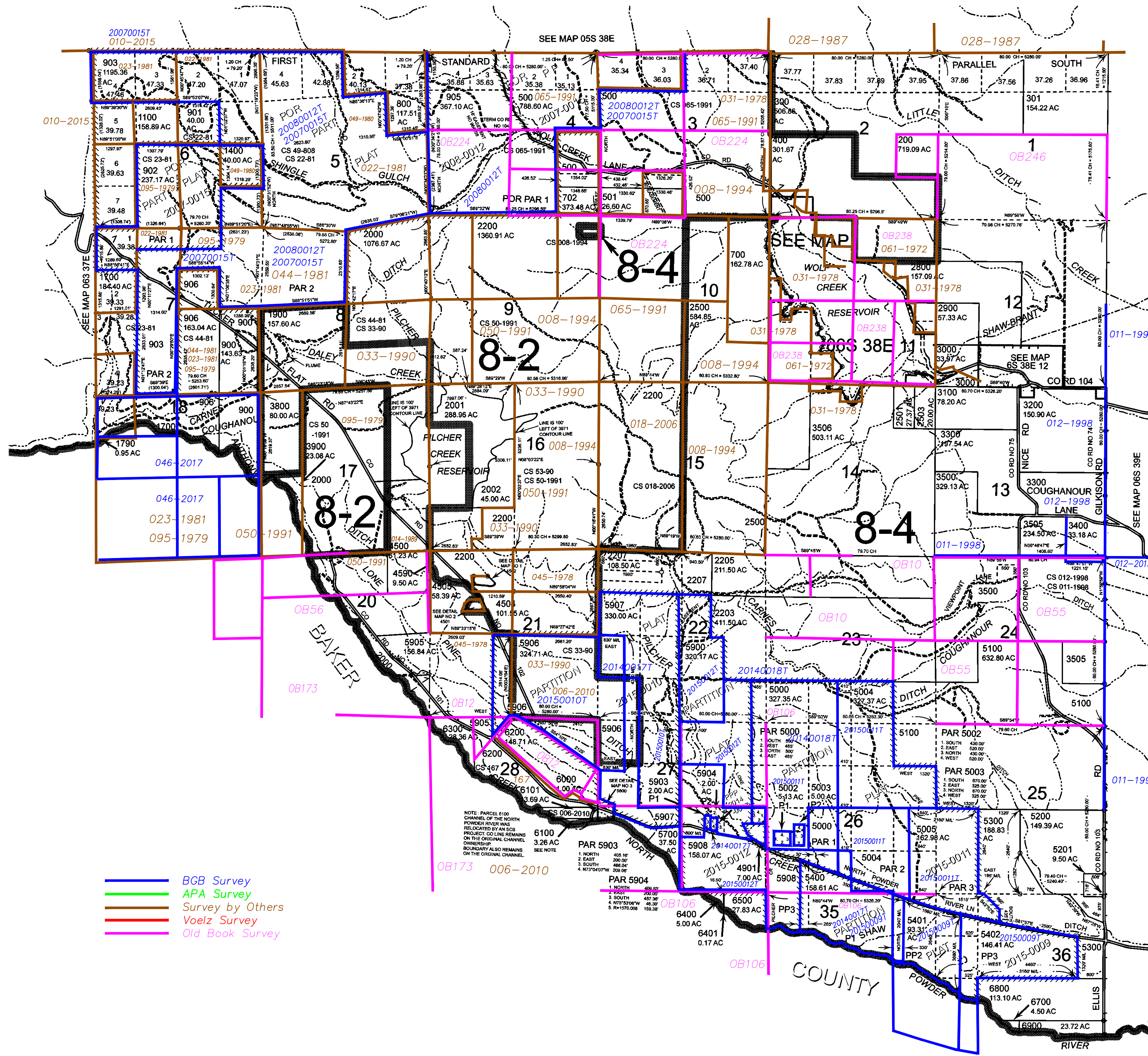


THIS MAP WAS PREPARED FOR ASSESSMENT PURPOSE ONLY



T.6S. R.38E. W.M. UNION COUNTY 1" = 2000'

06S38E & INDEX



- BGB Survey
- APA Survey
- Survey by Others
- Voelz Survey
- Old Book Survey

- Cancelled
- 100
- 401
- 600
- 703
- 705 THRU
- 712
- 714
- 716
- 717
- 720
- 721
- 901M1
- 902M1
- 904
- 1000
- 1200
- 1300
- 1500
- 1600
- 1800
- 2001M1
- 2100
- 2201
- 2202
- 2204
- 2206
- 2300
- 2400
- 2502
- 2504
- 2601
- 2701
- 2801
- 2901
- 2902
- 3000A1
- 3001
- 3101
- 3501 THRU
- 3504
- 3600
- 3700
- 3900M1
- 4000 THRU
- 4400
- 4506
- 4600 THRU
- 4800
- 4900
- 4902
- 5001
- 4503
- 5500
- 5501
- 5501U1 & U2
- 5600
- 5701
- 5801
- 5901
- 5902
- 6101M1

NOTE: PARCEL 6100 CHANNEL OF THE NORTH POWDER RIVER WAS RELOCATED BY AN SCS PROJECT. CO LINE REMAINS ON THE ORIGINAL CHANNEL OWNERSHIP BOUNDARY ALSO REMAINS ON THE ORIGINAL CHANNEL.

Revised: SH 07/10/2015

& INDEX 06S38E