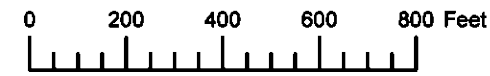
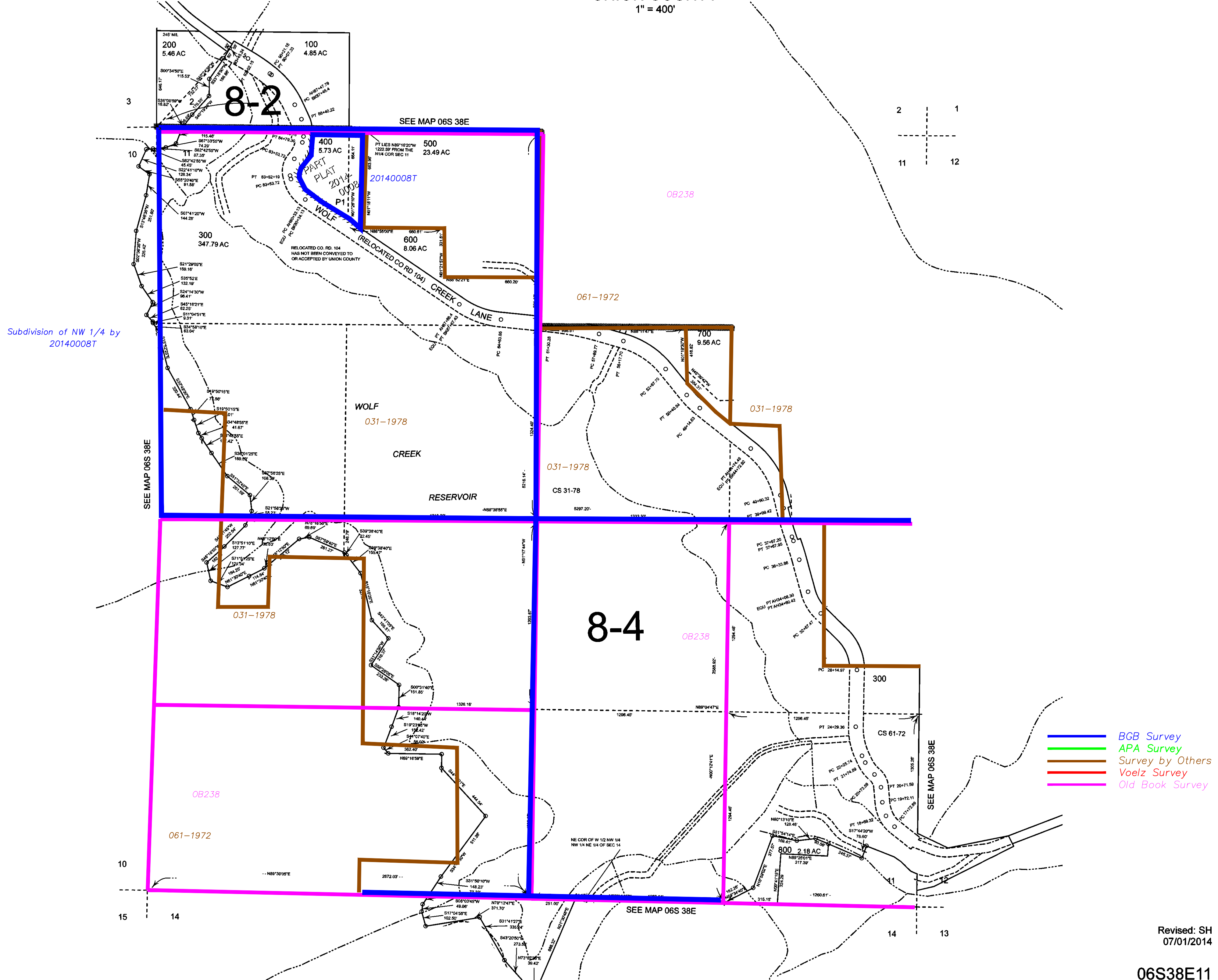


THIS MAP WAS PREPARED FOR ASSESSMENT PURPOSE ONLY



SECTION 11 T.6S. R.38E. W.M.  
UNION COUNTY  
1" = 400'

06S38E11



Subdivision of NW 1/4 by 20140008T

- BGB Survey
- APA Survey
- Survey by Others
- Voelz Survey
- Old Book Survey

Revised: SH  
07/01/2014

06S38E11