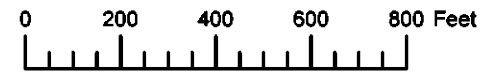
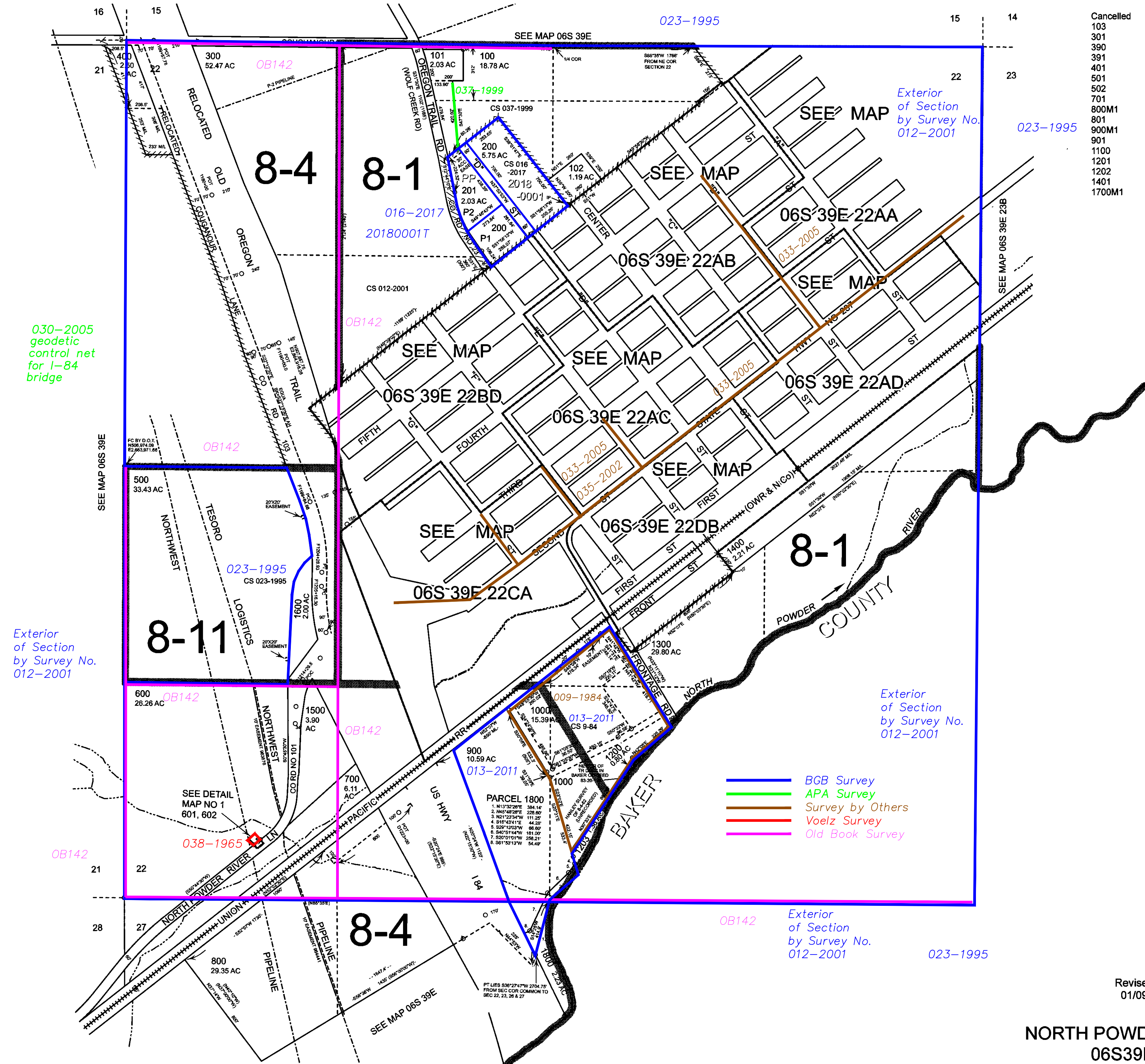


THIS MAP WAS PREPARED FOR ASSESSMENT PURPOSE ONLY



SECTION 22 T.6S. R.39E. W.M.  
UNION COUNTY  
1" = 400'

06S39E22  
NORTH POWDER



- Cancelled
- 103
- 301
- 390
- 391
- 401
- 501
- 502
- 701
- 800M1
- 801
- 900M1
- 901
- 1100
- 1201
- 1202
- 1401
- 1700M1

030-2005  
geodetic  
control net  
for I-84  
bridge

Exterior  
of Section  
by Survey No.  
012-2001

Exterior  
of Section  
by Survey No.  
012-2001

Exterior  
of Section  
by Survey No.  
012-2001

023-1995

Revised: SH  
01/09/2018

NORTH POWDER  
06S39E22