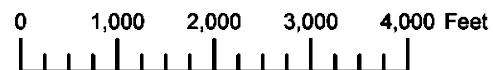


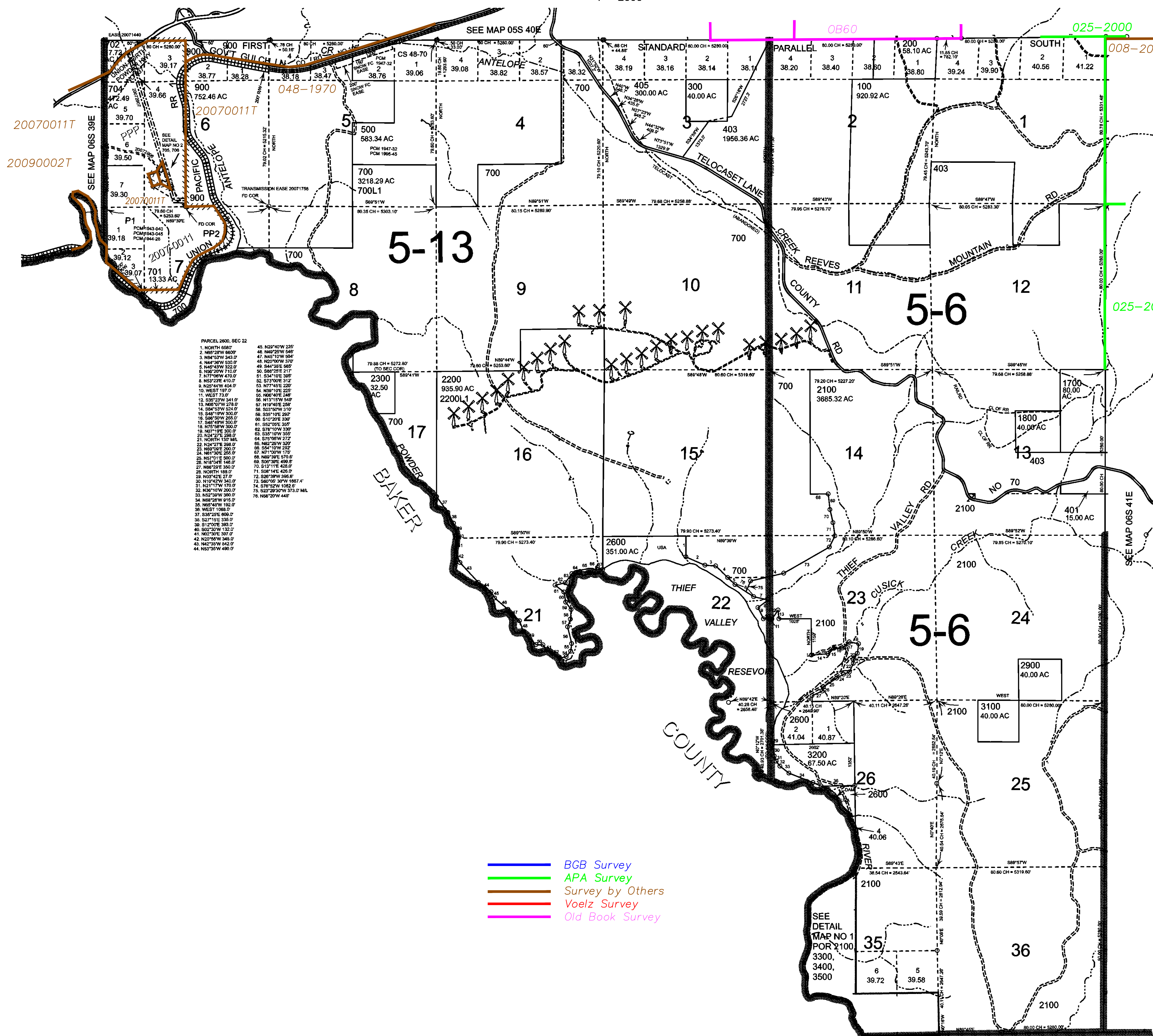
THIS MAP WAS PREPARED FOR ASSESSMENT PURPOSE ONLY



T.6S. R.40E. W.M. UNION COUNTY  
1" = 2000'

06S40E

Cancelled  
100M1  
400  
402  
404  
406  
600  
703  
800  
1000 THRU  
1600  
1900  
2000  
2001  
2101  
2400  
2500  
2700  
2800  
3000



PARCEL 2600, SEC 22

1. NORTH 666.7'	45. N23°40'W 225.0'
2. N85°29'W 660.0'	46. N48°22'W 548.0'
3. N64°53'W 343.0'	47. N45°10'W 504.0'
4. N44°36'W 530.0'	48. N20°00'W 370.0'
5. N46°43'W 322.0'	49. S44°35'E 560.0'
6. N66°29'W 710.0'	50. S88°25'E 217.0'
7. N77°06'W 470.0'	51. S34°10'E 389.0'
8. N53°25'E 410.0'	52. S73°00'E 312.0'
9. N22°44'W 404.0'	53. N77°45'E 220.0'
10. WEST 197.0'	54. N59°10'E 255.0'
11. WEST 73.0'	55. N06°40'E 248.0'
12. S33°23'W 341.0'	56. N1°15'W 549.0'
13. N69°07'W 278.0'	57. N19°45'E 258.0'
14. S84°53'W 528.0'	58. S03°50'W 310.0'
15. S45°19'W 500.0'	59. S35°10'E 260.0'
16. S80°50'W 265.0'	60. S10°20'E 330.0'
17. S48°49'W 300.0'	61. S52°00'E 306.0'
18. N75°58'W 300.0'	62. S78°10'W 330.0'
19. N87°11'E 300.0'	63. S35°10'W 306.0'
20. N24°27'E 298.0'	64. S75°00'W 272.0'
21. NORTH 152.0' M.L.	65. N54°10'W 332.0'
22. N24°27'E 298.0'	66. N82°20'W 320.0'
23. N69°06'E 293.0'	67. N7°00'W 175.0'
24. N81°30'E 255.0'	68. N88°39'E 450.0'
25. N63°01'E 590.0'	69. S06°39'E 450.0'
26. N18°04'E 146.0'	70. S13°11'E 425.0'
27. N69°25'E 350.0'	71. S08°14'E 425.0'
28. NORTH 188.0'	72. S26°39'W 350.0'
29. N03°42'E 27.0'	73. S60°05' 30'W 1987.4'
30. N10°42'W 340.0'	74. S78°52'W 1082.6' M.L.
31. N21°17'W 170.0'	75. S52°29'00'W 373.0' M.L.
32. N36°18'W 260.0'	76. N56°20'W 448.0'
33. N52°39'W 380.0'	
34. N69°28'W 615.0'	
35. N65°48'W 192.0'	
36. WEST 1988.0'	
37. S30°22'E 800.0'	
38. S27°15'E 335.0'	
39. S1°00'E 380.0'	
40. S02°30'W 132.0'	
41. N02°30'E 307.0'	
42. N20°50'W 345.0'	
43. N42°35'W 942.0'	
44. N53°30'W 490.0'	

- BGB Survey
- APA Survey
- Survey by Others
- Voelz Survey
- Old Book Survey

Revised: SH  
11/05/2013

06S40E