



---

# Place-Based Integrated Water Resources Planning

## Stakeholder Committee Meeting No. 5

Upper Grande Ronde River  
Watershed Partnership

Union County, Oregon  
April 12, 2017

---



---

# Meeting Agenda

- **Welcome**
    - Introductions
    - Upper Grande Ronde Place-based Planning overview/recap and newcomer's packet
    - Discuss/approve previous meeting minutes
    - Memorandum of Understanding (MOU) signature update
  - **Introduction to Planning Step 2**
    - Summary of water supply technical meeting
    - Oregon Department of Environmental Quality water quality presentation
  - **Small Group Discussions**
    - Individual map work
    - Present to group
  - **Conclusion**
-



---

## Upper Grande Ronde River Watershed Partnership Place-based Planning

- Five-step process for local water planning - 2-year effort
    - Build partnership
    - Understand water supply/watershed resources
    - Understand water demand
    - Identify solutions
    - Finalize action plan
  - Consensus-based decisions
  - Collaboration between diverse stakeholders (fifth partnership meeting)
  - Formalized through a governance agreement and MOU signature
-



- Located in the Upper Grande Ronde Watershed, which includes most of Union County (Grande Ronde River, Catherine Creek, and other tributaries)
- Newcomer information available (handout and governance agreement)





---

# Organization

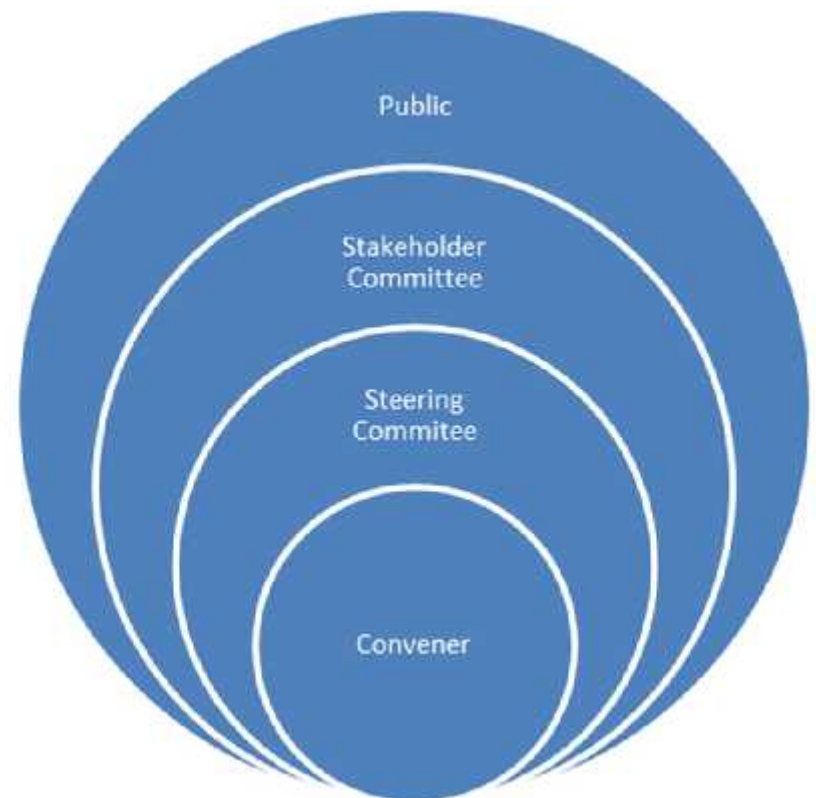
**Convener** - Union County

**Steering Committee** - Administrative Team (Oregon Department of Fish and Wildlife [ODFW], Oregon Water Resources Department [OWRD], Union County Farm Bureau, City of La Grande)

**Stakeholder Committee** - Local parties involved in planning who sign the MOU (voting)

**Interested Public** - Parties involved in the effort (non-voting)

**Ad Hoc Subcommittees** - Voluntary technical groups composed of the four groups above





---

## Administrative Items

- Discuss/approve previous meeting minutes
- MOU signature update (3/31)
- Union County
- City of Union\*
- City of Island City
- City of Imbler\*
- Union County Farm Bureau
- The Freshwater Trust
- Oregon State University Extension Office\*
- Grande Ronde Model Watershed
- Curtis Ricker Farms
- Union Soil Water and Conservation District
- OWRD
- ODFW
- Confederated Tribes of the Umatilla Indian Reservation
- Union County Seed Growers
- U.S. Fish and Wildlife Service\*
- Union County Cattlemen's Association
- Larry Larson - private citizen
- M&M Farming

\*denotes self-selected, non-voting member

To vote, must attend two of last four meetings

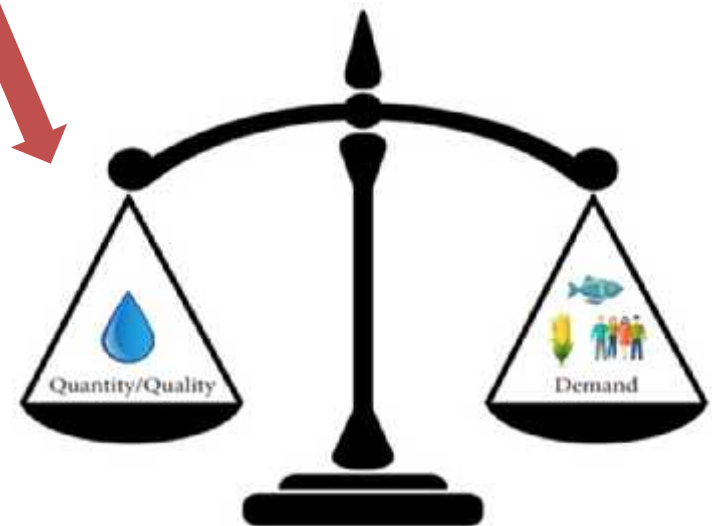
---



---

## Overview of Planning Step 2

- Understand current water resources and identify data gaps
  - Surface water supply and quality
  - Groundwater supply quality
  - Ecological characteristics
- The timeline is January 2017 through June 2017
- The outcome of this planning step will be a State of Water Resources Report





---

# Water Supply Technical Committee Meetings

- Approximately 15 people (five meetings)
  - Last stakeholder meeting focused on groundwater and surface water background information
  - This meeting will focus on surface water quality and quantity
-

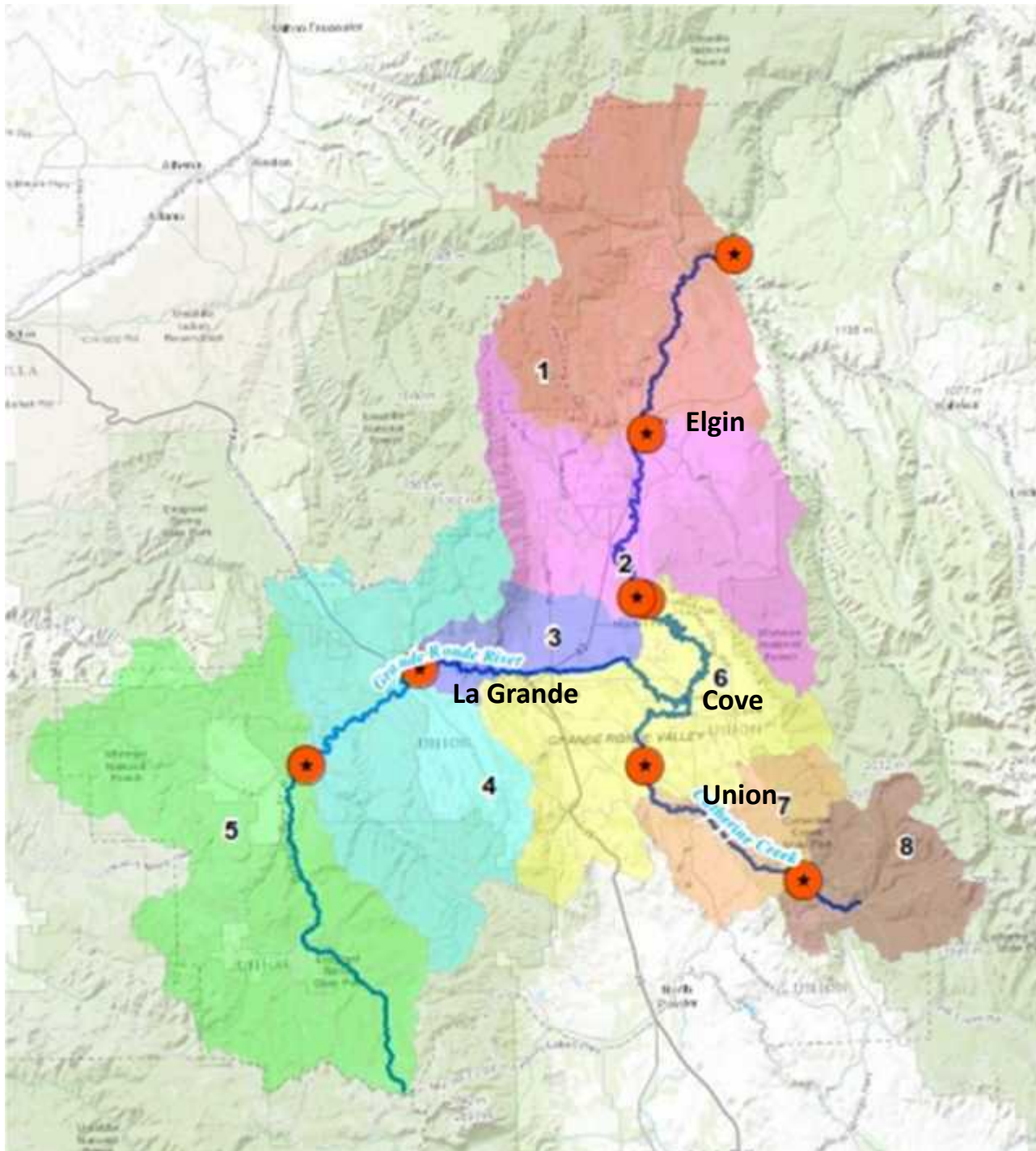




---

# Water Quality Presentation

---

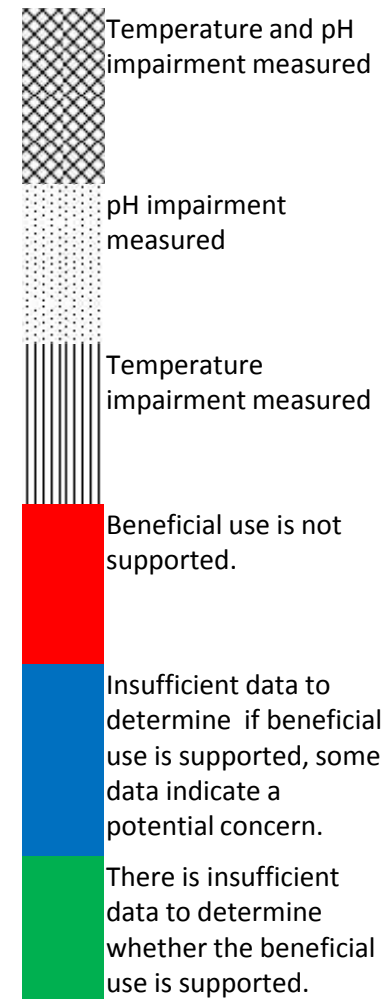


- Eight basins analyzed

# Surface Water Supply Limits to Beneficial Use

Month	Days	Beneficial Use Categories																		
		Anadromous fish passage	Salmonid Fish Spawning	Salmonid Fish Rearing	Resident Fish and Aquatic Life	Aquatic Life	Human Health	Public Dom. Water Supply	Private Dom. Water Supply	Water Contact Recreation	Industrial Water Supply	Irrigation	Livestock Watering	Wildlife and Hunting	Fishing	Boating	Aesthetic Quality	Hydropower	Commercial Nav. and Trans.	
Sep	1st to 15th	Temperature, pH																		
	16th to 30th																			
Aug	1st to 15th																			
	16th to 31st																			
Jul	1st to 15th																			
	16th to 30th																			
Jun	1st to 15th																			
	16th to 30th																			
May	1st to 15th																			
	16th to 31st																			
Apr	1st to 15th																			
	16th to 30th																			
Mar	1st to 15th																			
	16th to 31st																			
Feb	1st to 15th																			
	16th to 28th																			
Jan	1st to 15th																			
	16th to 31st																			
Dec	1st to 15th																			
	16th to 31st																			
Nov	1st to 15th																			
	16th to 30th																			
Oct	1st to 15th																			
	16th to 31st																			

## Basin 1 Legend





---

## Determining Water Availability - Review

- Statistical summary of water available for appropriation by month
- Based on stream flow records from 1958 to 1987
- Consumptive use calculated based on water rights and census of use by OWRD

The formula:  $NS - ED = AW$

Natural Streamflow

– Expected Demands:

reservations for storage

instream rights and scenic flows

out of stream rights

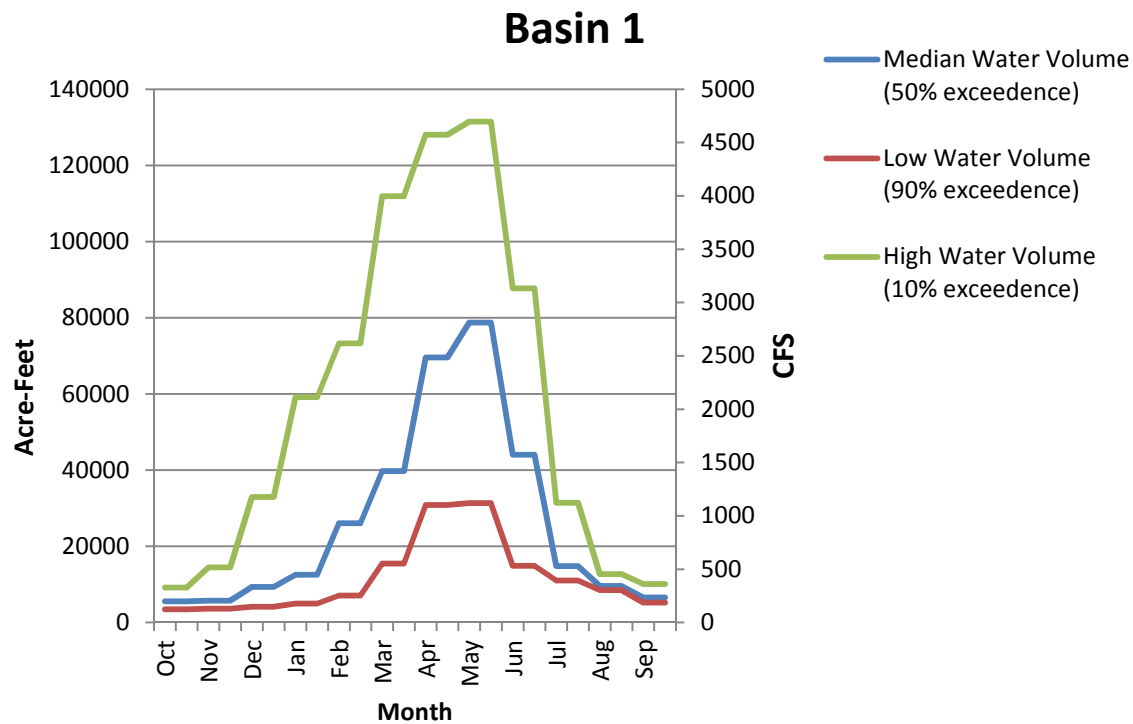
= Available Water

---



# Flow Data

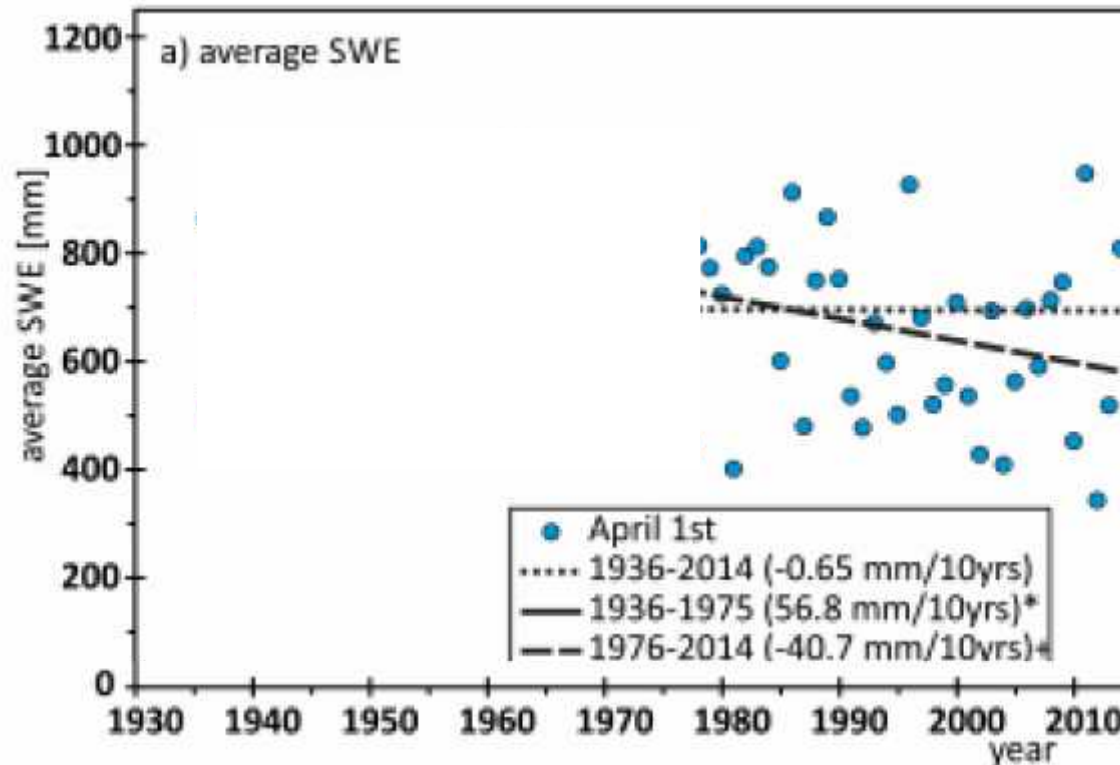
Hydrographs for each basin for 30 years of flow data (estimated upstream consumptive uses during the period 1958 to 1987 added back to them to represent pre-development conditions).





## Non-stationarity Introduction

- Planning to provide resilience and sustainability through flexibility





---

## Small Group Feedback Opportunity

- Break into six groups (20 minutes)
  - Go to a poster and consider these questions:
    - Does the data presented meet Step 2 as you understand it?
      - Understand current water resources and identify data gaps
        - » Surface water supply and quality
        - » Groundwater supply quality (from previous presentation)
        - » Ecological characteristics (what would you like to see?)
    - How does this data characterize each of the 8 basins?
    - What is missing (Data Gaps)?
  - Reconvene and discuss (20 minutes)
-



---

## Conclusion

- Next Meeting is May 18 (5:00 to 7:00 p.m.)
  - Incorporate feedback
  - Draft report
-





---

## Meeting Guidelines

Meeting guidelines to foster efficiency, collaboration, and respect include the following:

- Recognize the legitimacy of the interests and opinions of others.
  - Come to meetings prepared with comments.
  - Only one person speaks at a time.
  - Effort to offer a potential solution if a challenge or problem is brought forward.
  - Make commitments only if it is believed they can be fulfilled.
  - Respect the facilitator, agenda, and any issues put aside for later discussion.
  - Meeting minutes with task lists will be prepared after each meeting.
  - Personal attacks and other unprofessional behavior will not be tolerated.
-

# NorWeST Modeled Stream Temperature (August Mean)

Current Temp

2040 Temp

