

1973-023

IN THE COUNTY COURT OF THE STATE OF OREGON FOR THE COUNTY OF UNION

IN THE MATTER OF)
ACCEPTING MOUNTAIN VIEW) COURT ORDER
AS A COUNTY ROAD)

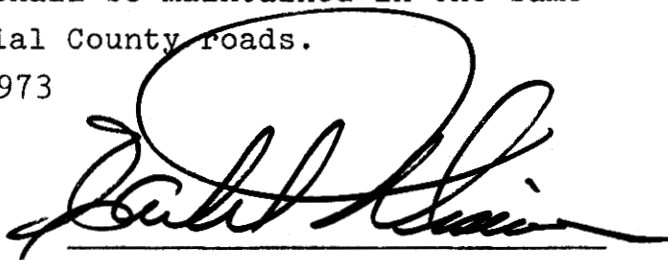
The Union County Court setting for official business April 5, 1973 did consider the matter of Mountain View Addition Streets, and,

WHEREAS: An improvement District was formed, work was completed for curbing, paving, and improving of the streets known as Mount Fanny Avenue, Emily Drive, and Harris Street located within Mountain View Addition as filed with the Union County Clerk on March 17, 1967, No. 15073, and recorded in Book 11 Page 58 of the recorded plats with the Union County Clerk and it being in the best interest of all concerned.

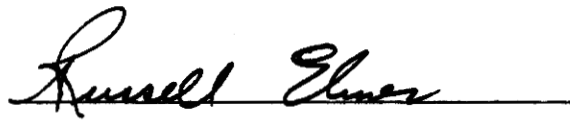
THEREFORE: The Union County Court does hereby specifically ACCEPT the streets of Mount Fanny Avenue, Harris Street, and Emily Drive located within Mountain View Addition as per the attached map as County Roads and the same shall be maintained in the same manner as all official County roads.

Dated this 5 day of May 1973

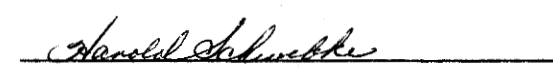
NUNC PRO TUNC
April 5, 1973



County Judge

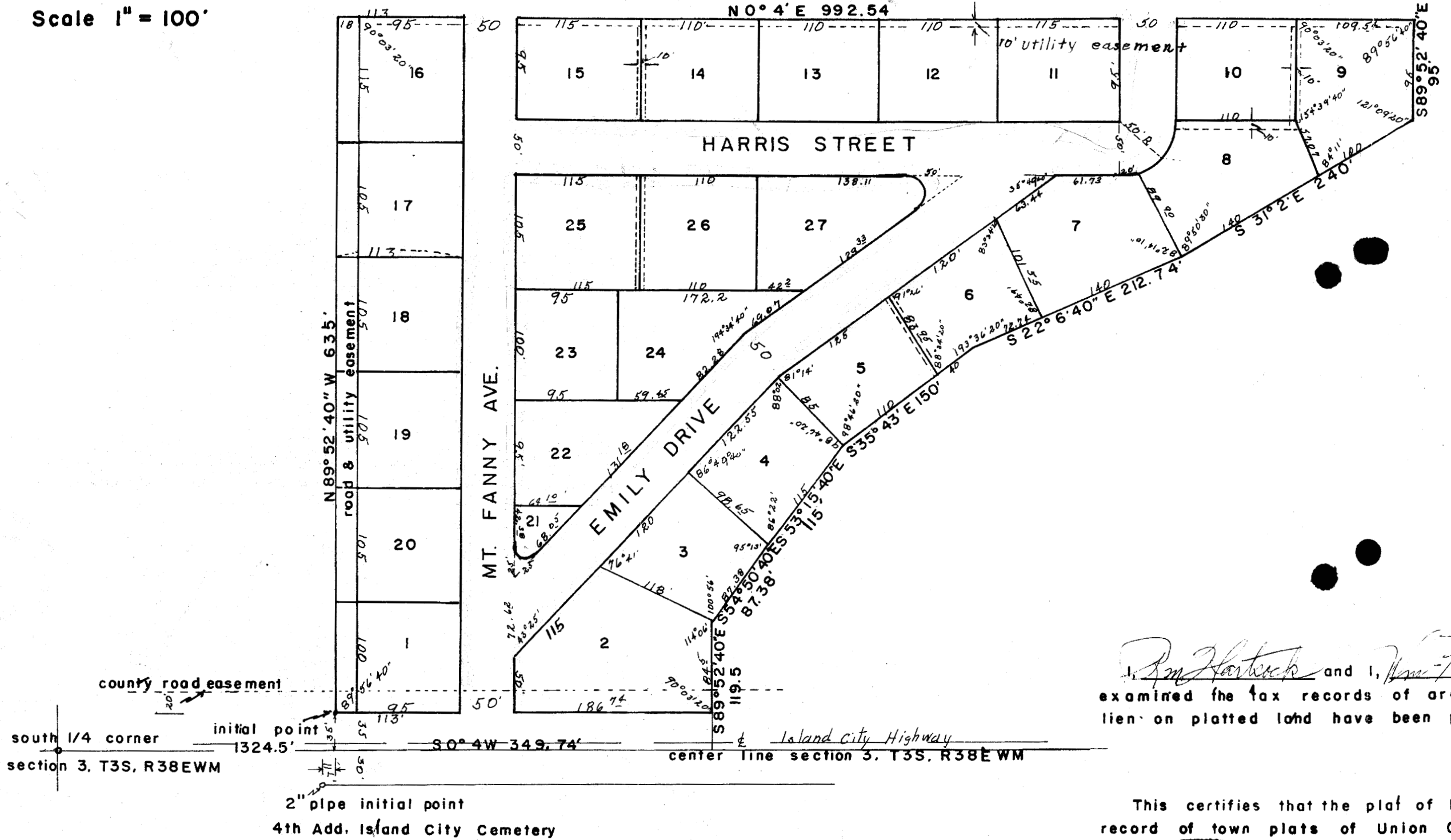


Commissioner



Commissioner

Scale 1" = 100'



R. M. Hartcock and I, *[Signature]*
 examined the tax records of area
 lien on platted land have been paid

This certifies that the plat of Map
 record of town plats of Union Cou
 County Court Journal _____ pa