

BE IT REMEMBERED, that at a regular term of the Union County Board of Commissioners, for the County of Union, sitting for the transaction of County business, begun and held at the Joseph Building Annex in the City of La Grande, in said County and State, on Wednesday of said month and the time fixed by law for holding a regular term of said Court, when were present:

The Honorable     STEVE MCCLURE             Chairman  
   COLLEEN MACLEOD             Commissioner  
   JOHN LAMOREAU             Commissioner

WHEN, on Wednesday, the 19<sup>th</sup> day of March, 2003, among others the following proceedings were had to-wit:

IN THE MATTER     )                     COURT ORDER  
OF NAMING             )                     2003-15  
CLEARWATER ROAD)

WHEREAS, Union County received an application on February 20, 2003, requesting a roadway to be named Clearwater Road;

WHEREAS, Union County Ordinance No. 1988-3 Section 1.200 requires the County Board of Commissioners to provide public hearing notice to adjoining landowners and in the newspaper;

WHEREAS, landowners adjacent to the affected roadway were mailed notice of a public hearing;

WHEREAS, The Observer newspaper published notice for a March 5, 2003 Board of Commissioners public hearing.

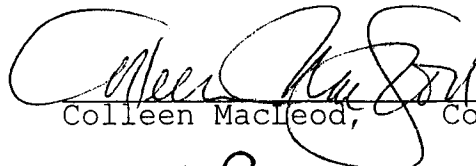
NOW THEREFORE, BE IT ORDAINED BY THE UNION COUNTY BOARD OF COMMISSIONERS, STATE OF OREGON:

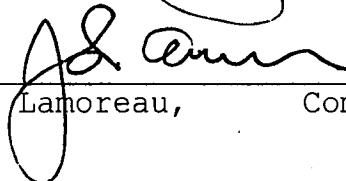
SECTION 1: ROAD NAME ADOPTION

Clearwater Road is a road described as a non-exclusive private easement for ingress, egress and utilities to properties described as Twp. 2S, Range 38 EWM, Section 34CB, Tax Lots 801, 803 and 804 including a 30 foot road right-of-way width terminating at a 60 foot right-of-way radius cul-de-sac as identified and established on Minor Partition Plat Number 2002-012 recorded with the Union County Clerk's Office in Plat Cabinets C-659 & C-660.

PASSED AND ADOPTED this 19<sup>th</sup> day of March, 2003 by a vote of the following members of the Board of Commissioners voting therefore.

  
Steve McClure, Chairman

  
Colleen Macleod, Commissioner

  
John Lamoreau, Commissioner

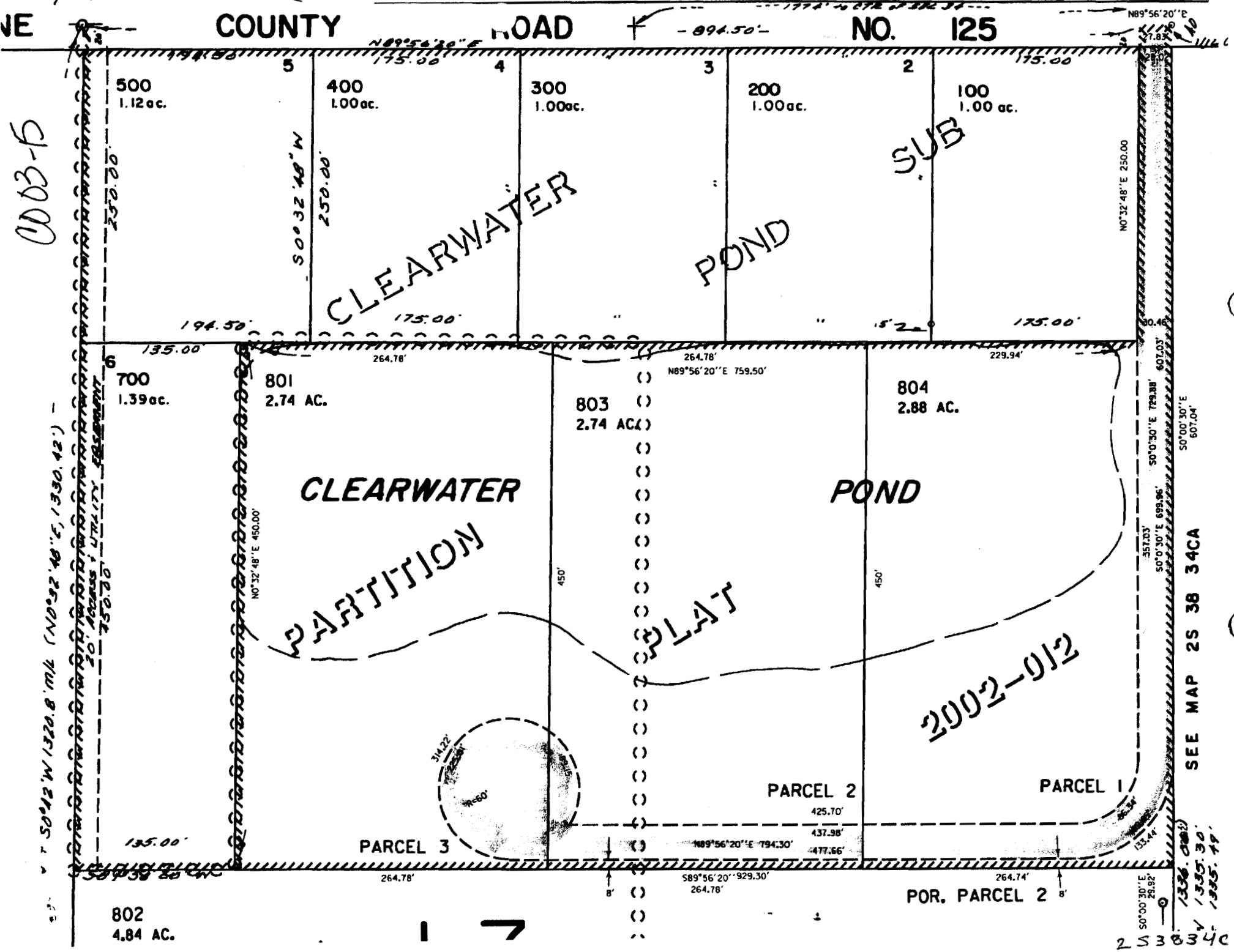
Fruitdale Lane

COUNTY

ROAD

NO. 125

0003-15



50°12' W 1320.8' ML (N0°32'48\"/>

500  
1.12 ac.

400  
1.00 ac.

300  
1.00 ac.

200  
1.00 ac.

100  
1.00 ac.

700  
1.39 ac.

801  
2.74 AC.

803  
2.74 AC.

804  
2.88 AC.

802  
4.84 AC.

PARCEL 3

PARCEL 2

PARCEL 1

POR. PARCEL 2

CLEARWATER  
POND

POND

CLEARWATER  
POND

POND

SUB

PLAT

2002-012

SEE MAP 25 38 34CA

253834CB