

Second Judicial Day

May 3, 1973

Court convened at 9:00a.m.

Those present were: The Honorable Earle C. Misener, Commissioners Elmer and Schwebke

IN THE MATTER OF THE PAYMENT)
GENERAL AND ROAD FUND BILLS)

Allowed as presented

IN THE MATTER OF THE MONTHLY
REPORT OF THE COUNTY TREASURER
AND CREDITS TO BE GIVEN HER:

Comes now, Ella Steinbeck, County Treasurer of Union County, Oregon and presentd to the Court certain vouchers, warrants and receipts showing that she has paid out of the various funds of the County certain sums of money. And it appearing to the Court, from an examination of said vouchers, and warrants that the sums have been duly paid out of the fund applicable thereto: that the warrants were regularly issued on the order of the Court, and that the Treasurer should have credit upon her account for the same.

It is therefore ORDERED that said vouchers, receipts, etc., be filed and the Treasurer be given credit therefore as follows:

1973 Disbursed During Month of April

261 Warrants-General Fund	65564.40
92 Warrants-Road Fund	64214.13
3 Law Library	168.95
1 Warrant-Homeowners Prop. Tax Relief	6.65
4 Receipts-Cemetary Dist. Fund	8751.72
1 Receipt-Special School Fund	20439.05
1 Receipt-Special Cities Fund	6221.00
1 Receipt-La Grande Rural Fire Protection Dist.	6295.01
	<hr/>
	\$171660.91

IN THE MATTER OF ACCEPTING)
MOUNTAIN VIEW AS A COUNTY)
ROAD)

COURT ORDER

The Union County Court setting for official business April 5, 1973 did consider the matter of Mountain View Addition Streets, and,

WHEREAS: An improvement District was formed, work completed for curbing, paving, and improving of the streets known as Mount Fanny Avenue, Emily Drive, and Harris Street located within Mountain View Addition as filed with the Union County Clerk on March 17, 1967, No. 15073, and recorded in Book 11 Page 58 of the recorded plats with the Union County Clerk and it being in the best interest of all concerned.

THEREFORE: The Union County Court does hereby specifically ACCEPT the streets of Mount Fanny Avenue, Harris Street, and Emily Drive located within Mountain View Addition as per the attached map as County Roads and the same shall be maintained in the same manner as all official County roads.

Dated this 2 day of May, 1973

NUNC PRO TUNC
April 5, 1973

/s/ Earle C. Misener
County Judge

/s/ Russell Elmer
Commissioner

/s/ Harold Schwebke
Commissioner

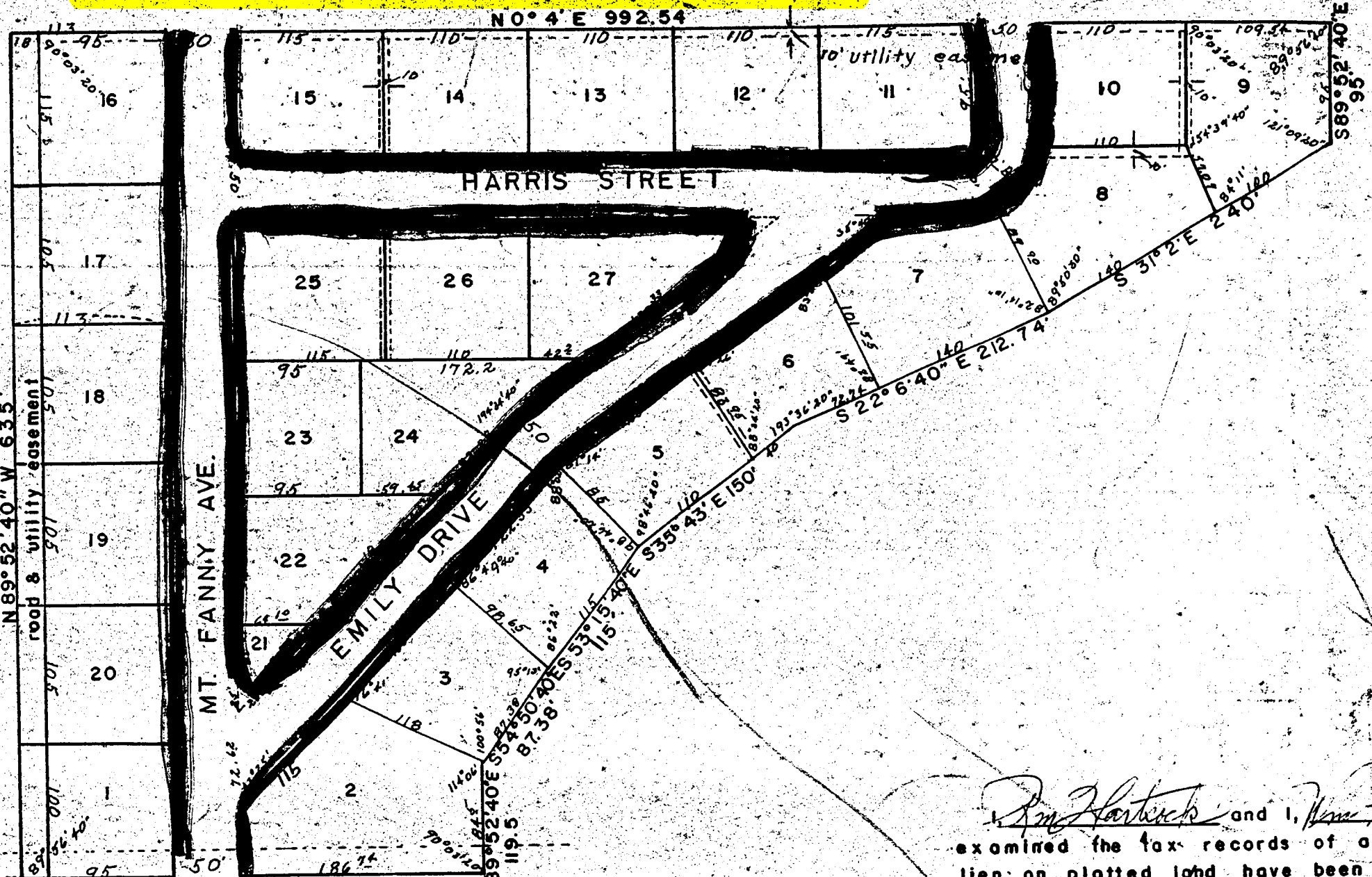
Second Judicial Day, continued

May 3, 1973

MOUNTAIN VIEW, continued

COMMISSIONERS JOURNAL "U" PAGE 158A

Scale 1" = 100'



south 1/4 corner initial point 1324.5' 30° 4' W 349.74' center line section 3, T3S, R38E WM
 section 3, T3S, R38EWM

2" pipe initial point
 4th Add. Island City Cemetery

R. M. Hartwick and I, *John F. ...*
 examined the tax records of area
 lien on platted land have been pe

This certifies that the plat of M
 record of town plats of Union Co
 County Court Journal