

Second Judicial Day, continued

May 3, 1973

IN THE MATTER OF)
ACCEPTING PROGRESS)
PLAZA AS A COUNTY ROAD)

COURT ORDER

NOW, the County Court setting for official business April 5, 1973, reviewed the street situation within Progress Plaza Subdivision filed May 5, 1960, County Clerk Recording No. 58423, and

WHEREAS, Progress Drive located within the above referenced subdivision has not been accepted as a County Road, and,

WHEREAS, it is in the best interest of all concerned that Progress Drive as located on the attached map marked Exhibit A become a County road. The Union County Court does HEREBY ACCEPT Progress Drive situated in Progress Plaza as a County road.

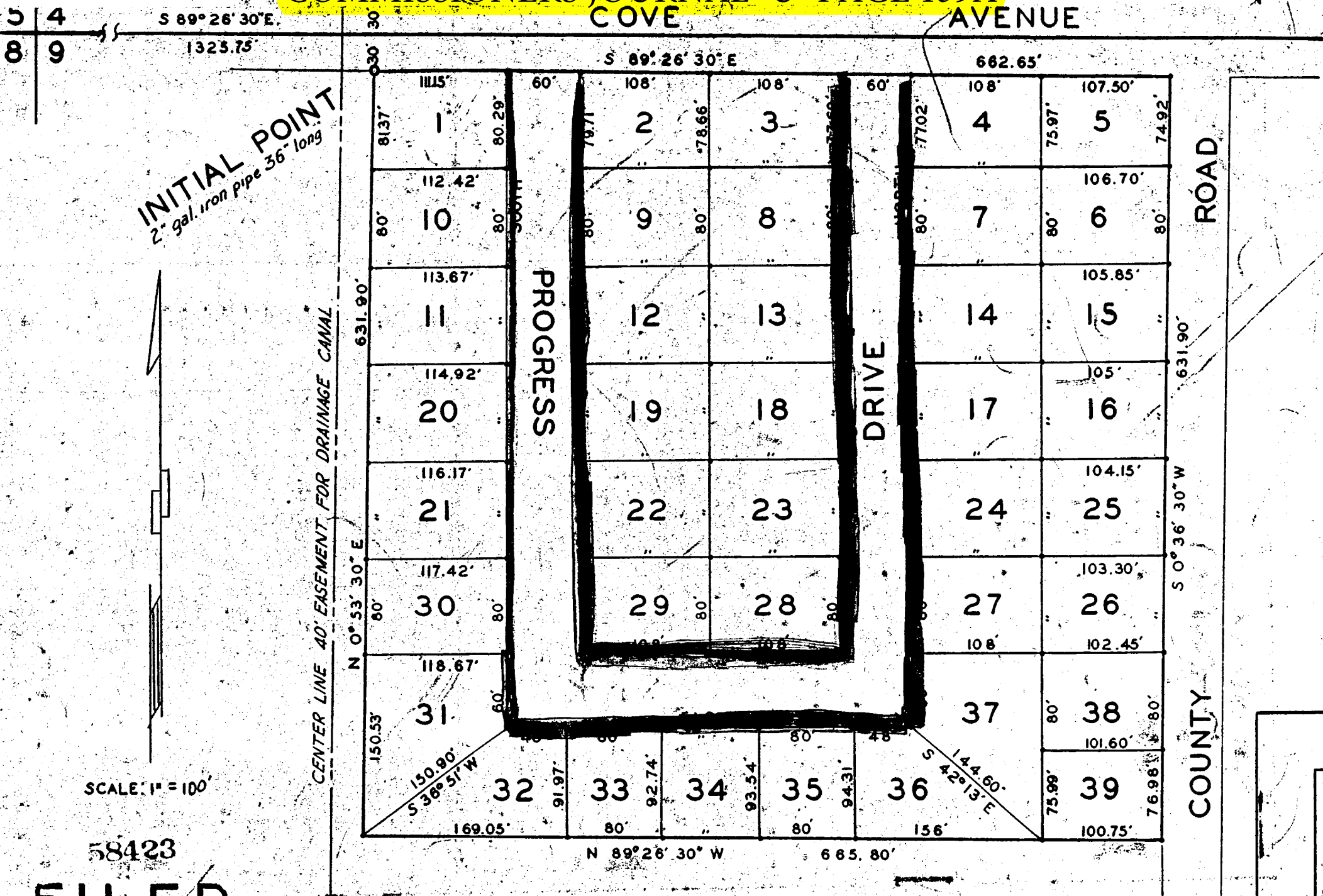
Dated the 3 day of May, 1973

NUNC PRO TUNC
April 5, 1973

/s/ Earle C. Misener
County Judge

/s/ Russell Elmer
Commissioner

/s/ Harold Schwebke
Commissioner



INITIAL POINT
2" gal. iron pipe 36" long

SCALE: 1" = 100'

58423

FILED

MAY 5 1960

C. L. GRAHAM
COUNTY CLERK

Note: