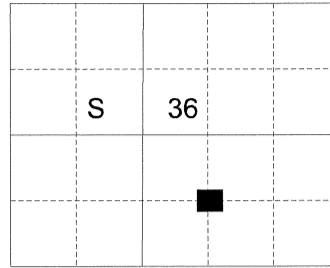


**CELESTIAL RECORD OF LAND CORNER MONUMENTATION**

**HISTORY OF ORIGINAL CORNER ESTABLISHMENT:**

Corner not previously established

T 1 S R 35 E Y- 24



**DESCRIPTION OF CORNER EVIDENCE FOUND:**

None.

See Survey Number 015-2011.

**DESCRIPTION OF MONUMENT AND ACCESSORIES I ESTABLISHED TO PERPETUATE THE ORIGINAL LOCATION OF THIS CORNER:**

At the position determined by survey, I set a 5/8" x 30" iron pin with 2 1/2" aluminum cap marked as shown below, 29" in the ground from which:

**BEARING OBJECTS:**

A 12 inch Spruce bears North 8° East, a distance of 14.90 feet, marked LOT 8 BT.

A 5 inch Lodgepole Pine bears South 85° West, a distance of 28.76 feet, marked X BT.

I set a steel fencepost 1 foot North of monument.

I hereby certify that the corner was monumented on May 19, 2011.

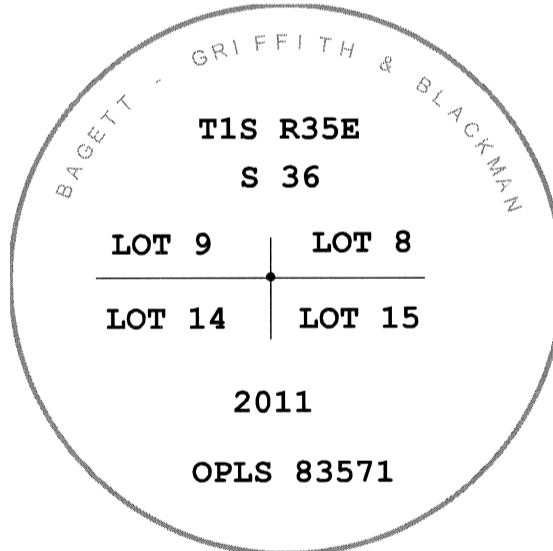
Witness: Gregory T. Blackman Jr.

REGISTERED  
PROFESSIONAL  
LAND SURVEYOR



OREGON  
June 2, 2010  
JEFFERY S. HSU  
83571

Renewal Date: June 30, 2011



**UNION COUNTY  
SURVEYOR**

Date Received 6/6/11

Date Filed 6/22/11

Filed By R. ROBINSON, DEPUTY

File Number 003-2011 R

I used a magnetic compass and steel tape in the establishment of the accessories. Magnetic declination used was 16° East. The distances are to a 60d spike in the right hand side of the trees and bearings are to a brass washer marked OPLS 83571 in the upper portion of the BT blaze.