

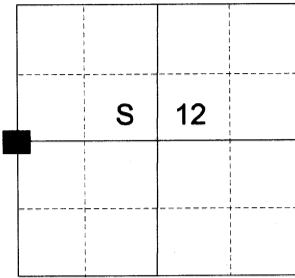
CERTIFIED RECORD OF LAND CORNER MONUMENTATION

HISTORY OF ORIGINAL CORNER ESTABLISHED:

Corner established under GLO Contract No. 102, dated July 20, 1863, executed by Timothy Davenport. Surveyor General field notes state:

Set post for 1/4 section corner in mound of Earth with charred stake pits trench as per instructions.

T 2 S R 38E G-21



DESCRIPTION OF CORNER EVIDENCE FOUND:

None

SEE SURVEY NUMBER 018-2021

DESCRIPTION OF MONUMENT AND ACCESSORIES I ESTABLISHED TO MONUMENT THE ORIGINAL LOCATION OF THIS CORNER:

At position determined by survey, I set a 5/8" X 30" iron pin with 2 1/2" Aluminum cap, marked as shown below, 34" in the ground, from which:

NEW BEARING OBJECTS:

- A 5/8" x 30" iron pin bears North 54° 55' East, a distance of 28.75 feet, with 1 1/2" aluminum cap marked BGB SURVEY MARKER NE RP
- A 5/8" x 30" iron pin bears South 47° 20' East, a distance of 32.41 feet, with 1 1/2" aluminum cap marked BGB SURVEY MARKER SE RP
- A 5/8" x 30" iron pin bears South 41° 25' West a distance of 39.75 feet, with 1 1/2" aluminum cap marked BGB SURVEY MARKER SW RP
- A 5/8" x 30" iron pin bears North 62° 05' West, a distance of 29.53 feet, with 1 1/2" aluminum cap marked BGB SURVEY MARKER NW RP

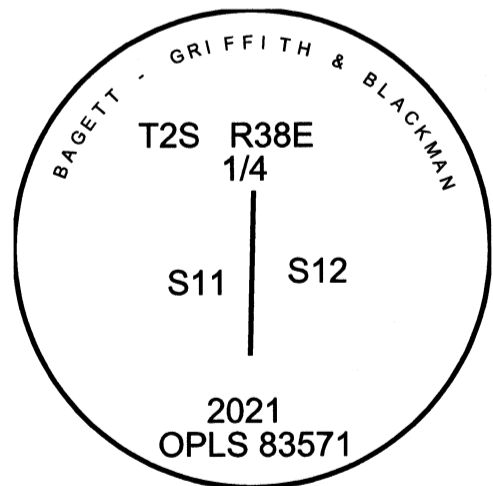
Falls in Webster Road.

I hereby certify that the corner was monumented on May 10, 2021.

Witness: Kyle Tucker



Renewal Date: June 30, 2021



UNION COUNTY SURVEYOR

Date Received 5/21/21

Date Filed 5/21/21

Filed By [Signature]

File Number 012-2021R

I used a Leica GS18 with RTK in the establishment of the new accessories. Bearings and distances are measured to the center of the aluminum cap.