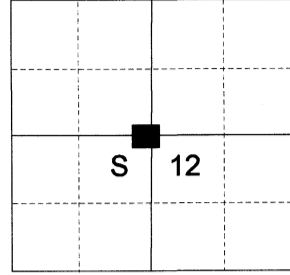


**CERTIFIED RECORD OF LAND CORNER MONUMENTATION**

**HISTORY OF ORIGINAL CORNER ESTABLISHED:**

Corner not previously established.

T 2 S R 38E G-23



**DESCRIPTION OF CORNER EVIDENCE FOUND:**

None

SEE SURVEY NUMBER 018-2021

**DESCRIPTION OF MONUMENT AND ACCESSORIES I ESTABLISHED TO MONUMENT THE ORIGINAL LOCATION OF THIS CORNER:**

At position determined by survey, I set a 5/8" x 30" iron pin with 2 1/2" aluminum cap, marked as shown below, 30" in the ground, from which:

**NEW BEARING OBJECTS:**

A 5/8" x 30" iron pin bears North 0° 03' East, a distance of 30.00 feet, with 1 1/2" aluminum cap marked NE RP

A 5/8" x 30" iron pin bears South 89° 49' East a distance of 30.01 feet, with 1 1/2" aluminum cap marked SE RP

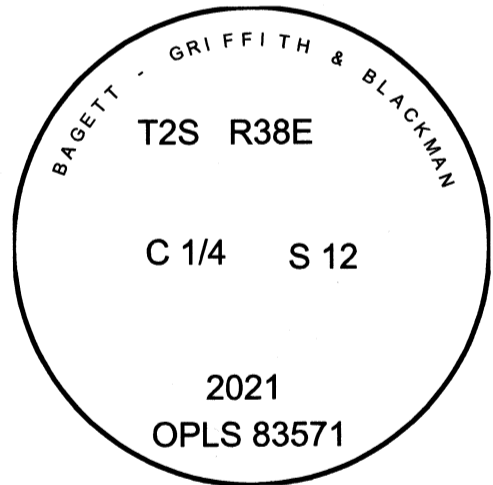
A 5/8" x 30" iron pin bears South 44° 18' West a distance of 8.58 feet, with 1 1/2" aluminum cap marked SW RP

A 5/8" x 30" iron pin bears North 54° 53' West a distance of 6.12 feet, with 1 1/2" aluminum cap marked NW RP

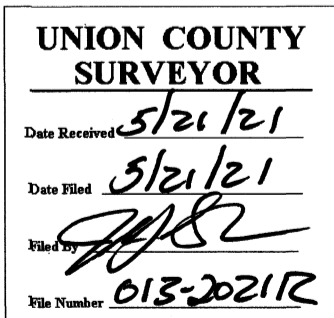
Set a fence post approximately 30 feet North and East from monument.

I hereby certify that the corner was monumented on May 12, 2021.

Witness: Kyle Tucker, Emmitt Ambert



Renewal Date: June 30, 2021



I used a Leica GS18 with RTK in the establishment of the new accessories. Bearings and distances are measured to the center of the aluminum cap. Basis of bearing is as per Survey Number 018-2021.