

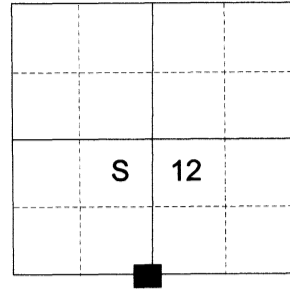
CERTIFIED RECORD OF LAND CORNER MONUMENTATION

HISTORY OF ORIGINAL CORNER ESTABLISHED:

Corner established under GLO Contract No. 102, dated July 20, 1863, executed by Timothy Davenport. Surveyor General field notes state:

Set post for 1/4 section corner in mound of Earth with charred stake next to trench as per instructions.

T 2 S R 38E J-23



DESCRIPTION OF CORNER EVIDENCE FOUND:

None

SEE SURVEY NUMBER 018-2021

DESCRIPTION OF MONUMENT AND ACCESSORIES I ESTABLISHED TO MONUMENT THE ORIGINAL LOCATION OF THIS CORNER:

At position determined by survey, I set a 5/8" x 30" iron pin with 2 1/2" Aluminum cap, marked as shown below, 35" in the ground, from which:

NEW BEARING OBJECTS:

A 5/8" x 30" iron pin bears North 45° East, a distance of 38.02 feet, with 1 1/2" aluminum cap marked BGB SURVEY MARKER NE RP

A 16" Power pole bears South 67° East, a distance of 74.57 feet, marked 035135200

A 5/8" x 30" iron pin bears South 58° 33' West, a distance of 48.24 feet, with 1 1/2" aluminum cap marked BGB SURVEY MARKER SW RP

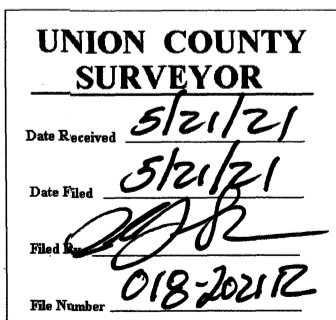
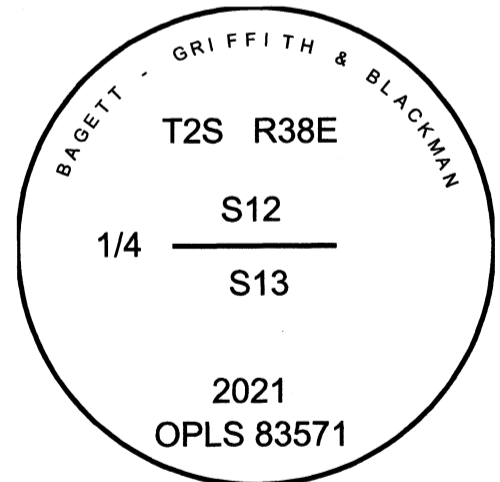
A 5/8" 30" iron pin bears North 58° 22' West, a distance of 51.19 feet, with 1 1/2" aluminum cap marked BGB SURVEY MARKER NW RP

I hereby certify that the corner was monumented on May 10, 2021.

Witness: Kyle Tucker



Renewal Date: June 30, 2021



I used a Leica GS18 with RTK in the establishment of the new accessories. Bearings and distances are measured to the center of the aluminum cap. Bearings to the power pole are to the center. Distance is to a spike in the side of the power pole. Basis of bearing is as per Survey Number 018-2021.