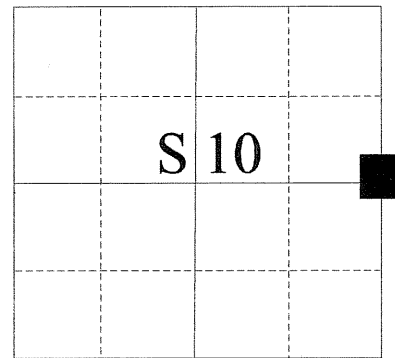


CERTIFIED RECORD OF LAND CORNER MONUMENTATION

HISTORY OF ORIGINAL CORNER ESTABLISHMENT:

Corner originally established by David P. Thompson under GLO contract number 103, dated September 3, 1863 Surveyor General record states:
Set post for 1/4 cor in mound of earth.

T 3 S R 38 E G - 17



No record of subsequent monumentation found in Union County survey records.

DESCRIPTION OF CORNER EVIDENCE FOUND:

No evidence was found, so the corner was placed at the proportioned position.

See Survey No. 020-2007

DESCRIPTION OF MONUMENT AND ACCESSORIES I ESTABLISHED TO PERPETUATE THE ORIGINAL LOCATION OF THIS CORNER:

At proportionate position as determined by Survey No. 020-2007 I set a 2½" x 30" aluminum pipe with aluminum cap marked as shown, 60 inches in the ground, from which:

A 5/8" X 30" rebar bears N39°39'W, 27.49 feet in East-West fenceline, with aluminum cap marked "BGB SURVEY MARKER NW RP"

A 5/8" X 30" rebar bears N28°32'E, 23.64 feet in East-West fenceline, with aluminum cap marked "BGB SURVEY MARKER NE RP"

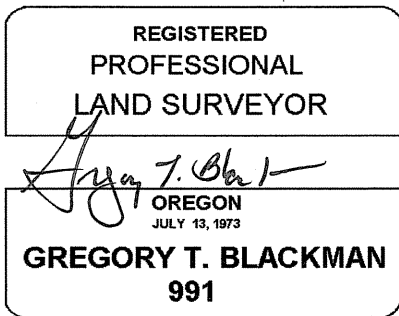
A 5/8" X 30" rebar bears S45°37'E, 13.23 feet, with aluminum cap marked "BGB SURVEY MARKER SE RP"

A 5/8" X 30" rebar bears S48°08'W, 11.64 feet, with aluminum cap marked "BGB SURVEY MARKER SW RP"

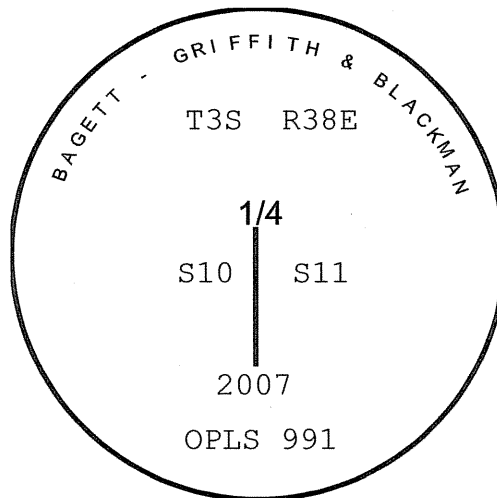
Existing East-West and North Fence Corner is located 21.4 feet to the North of the existing corner monument.

I hereby certify that the above corner point was perpetuated as hereon described on September 28, 2007.

Witnesses: Jeff Hsu & Gregory T. Blackman Jr.



Renewal Date: Dec. 31, 2007



UNION COUNTY SURVEYOR
Date Received 12/10/07
Date Filed 12/11/07
Filed By R. Robinson, Deputy
File Number 022-2007R

The bearing and distance to the iron pins were determined by a GPS observation using a Leica 530 base and receiver. The basis of bearing is that of Survey number CS 020-2007. The distances are to the center of the aluminum caps.

HORIZONTAL CONTROL DATA

UNION COUNTY, OREGON

OREGON STATE PLANE, NORTH ZONE (3601)

STA NAME: 200724

1/4 SECTION CORNER COMMON TO SECTIONS: 10 and 11

TWP. 3 S. RGE. 38 E.

GEODETIC COORD: NAD 83(91)

DATE TIED: November 12, 2007

LAT: 45 ° 19 ' 6.66913 " N

SURVEYOR: RICK G. ROBINSON
OPLS 2219

LONG: 118 ° 2 ' 5.88093 " W

FIRM: BAGETT, GRIFFITH, & BLACKMAN
2006 ADAMS AVENUE
LAGRANDE, OR 97850
(541) 963-6092

SP. COOR: NAD 83(91)

N: 611891.782 INT FT.

E: 8836058.001 INT FT.

TYPE: GPS

THETA: 1 ° 44 ' 53.4011587 "

ORDER: SECOND CLASS: 1

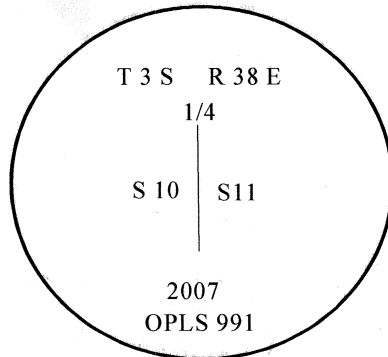
SCALE FACTOR: 0.9998979914

ELEV: 2719.03 US FT.

ELEV: DATUM: NGVD 29

COMMENTS:

Corner is 2 1/2" aluminum monument
with aluminum cap marked as shown:



REGISTERED
PROFESSIONAL
LAND SURVEYOR

Rick G. Robinson
OREGON
July 17, 1986
RICK G. ROBINSON
2219

Renewal Date: December 31, 2008

1 METER = 3.2808333333... US FEET = 39.37 INCHES

1 METER = 3.280839895 INT'L FEET OR 1 INCH = 2.54 CM

TO CALCULATE ELEVATION FACTOR (IN THE NORTH AMERICAN CONTINENT)

DIVIDE 20,906,000 BY (20,906,000 + ELLIPSOID ELEV. IN FEET)