

T-21

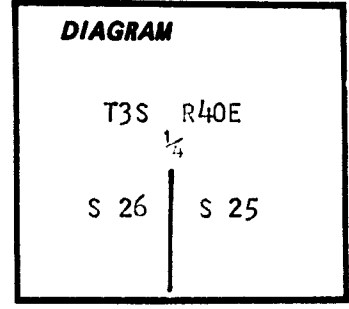
CERTIFIED RECORD OF LAND CORNER MONUMENTATION

**History of original corner establishment:**

Corner originally established by W.B. Barr in 1880, under government contract. Contract number was not recorded on the notes. Surveyor General record states:

Set stake 4 ft long 4 in diam 18 inches in ground for 1/4 Sec corner from which:

- A pine 6 in diam bears N82°E 50 lks dist
- A pine 30 in diam bears S34 1/2°W 94 lks dist



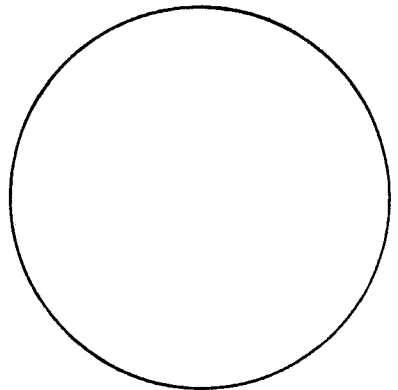
**Description of corner evidence found:**

Found channel post set by BLM. A steel fence post with a location tag is set next to the channel post.

**Description of monument and accessories I established to perpetuate the original location of this corner:**

NONE

See survey number 46-79



REGISTERED  
PROFESSIONAL  
LAND SURVEYOR

*Gregory T. Blackman*

OREGON  
JULY 13, 1973  
GREGORY T. BLACKMAN  
991

Office of..... County of.....  
 State of....., I hereby certify that the within instrument was filed in this office  
 for record on the..... day of....., 19.....  
 ..... by .....  
 (COUNTY OFFICIAL) (DEPUTY)

**UNION COUNTY SURVEYOR**

Date Received 4-19-84  
★ GPO—788-276

Date Filed 4-19-84

By G. LANGLITZ, Deputy

File No. 844-84 R

Form R6-7100-57 (9/71)

See Survey 13-24

# HORIZONTAL CONTROL DATA

## UNION COUNTY, OREGON

### OREGON STATE PLANE, NORTH ZONE (3601)

STA NAME: 200723

1/4 SECTION CORNER COMMON TO SECTIONS: 25 and 26

TWP. 3 S. RGE. 40 E.

GEODETIC COORD: NAD 83(91)

DATE TIED: August 27, 2007

LAT: 45 ° 16 ' 31.12806 " N

SURVEYOR: RICK G. ROBINSON  
OPLS 2219

LONG: 117 ° 46 ' 1.75973 " W

FIRM: BAGETT, GRIFFITH, & BLACKMAN  
2006 ADAMS AVENUE  
LAGRANDE, OR 97850  
(541) 963-6092

SP. COOR: NAD 83(91)

N: 598364.104 INT FT.

E: 8905441.617 INT FT.

TYPE: GPS

THETA: 1 ° 56 ' 17.1424321 "

ORDER: SECOND CLASS: 1

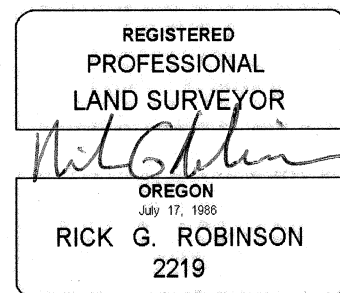
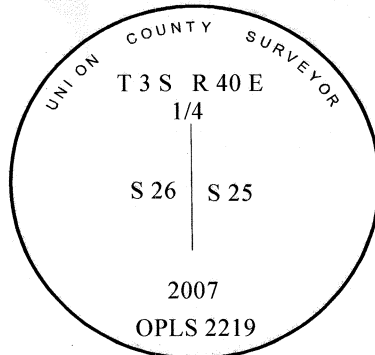
SCALE FACTOR: 0.9998963081

ELEV: 3938.15 US FT.

ELEV: DATUM: NGVD 29

#### COMMENTS:

Corner is 2 1/2"x30" aluminum pipe with aluminum cap marked as shown:



Renewal Date: December 31, 2008

1 METER = 3.280833333... US FEET = 39.37 INCHES

1 METER = 3.280839895 INT'L FEET OR 1 INCH = 2.54 CM

TO CALCULATE ELEVATION FACTOR ( IN THE NORTH AMERICAN CONTINENT)

DIVIDE 20,906,000 BY (20,906,000 + ELLIPSOID ELEV. IN FEET)

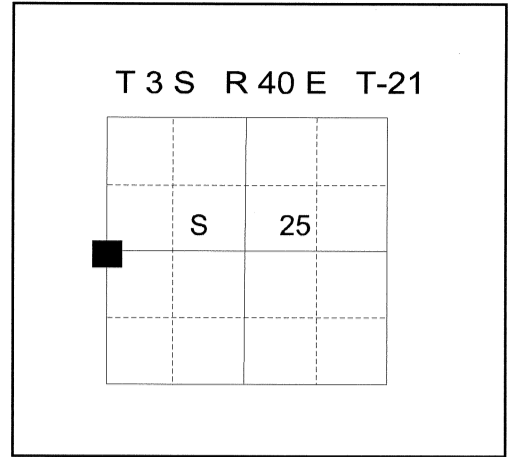
**CERTIFIED RECORD OF LAND CORNER MONUMENTATION**

**HISTORY OF ORIGINAL CORNER ESTABLISHMENT:**

Corner originally established by W. B. Barr in 1880, under government contract number 355. Survey General record states:

Set stake 4 ft. long 4 in. Diam. 18 inches in ground for 1/4 Sec cor from which:

A pine 6 in. diam. bears N82°E, 50 lks. dist.  
A pine 30 in. diam. bears S34 1/2°W, 94 lks. dist.



**DESCRIPTION OF CORNER EVIDENCE FOUND:**

Found 1" X 1" X 4 ft. long piece of channel iron with yellow location tag attached set by the BLM. Previously accepted by Surveys 46-79, 32-81, 13-84 and 027-1997.

**DESCRIPTION OF MONUMENT AND ACCESSORIES I ESTABLISHED TO PERPETUATE THE ORIGINAL LOCATION OF THIS CORNER:**

At channel iron position, I set a 2"x30" aluminum pipe monument 15" in the ground, with mound of stone 1.5 ft. base to top of cap, from which;

**BEARING OBJECTS:**

A 12" Ponderosa Pine bears N. 10° E., a distance of 56.09 feet, marked 1/4 S25 BT.

An 8" Douglas Fir bears S. 32° E., a distance of 41.42 feet, marked 1/4 S25 BT.

A 9" Douglas Fir bears S. 39 1/2° W., a distance of 38.22 feet, marked 1/4 S26 BT.

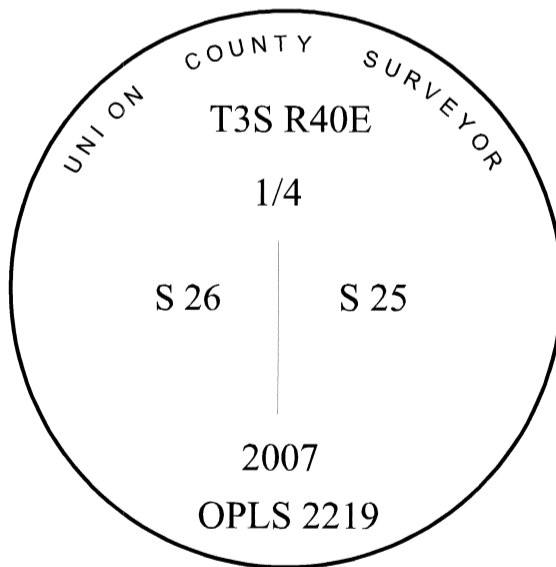
A 17" Douglas Fir bears N. 70 1/2° W., a distance of 30.74 feet, marked 1/4 S26 BT.

I hereby certify that the corner was monumented on August 24, 2007.  
Witness: Keith Wolford, Jeff Hsu

REGISTERED  
PROFESSIONAL  
LAND SURVEYOR

OREGON  
July 17, 1986  
RICK G. ROBINSON  
2219

Renewal Date: December 31, 2008



**UNION COUNTY SURVEYOR**

Date Received 7/15/2010

Date Filed 7/15/2010

Filed By [Signature]

File Number 023-2010R

I used a steel tape and magnetic compass in the establishment of the new accessories. I used 18° East declination. The distances to the accessories are from a spike set in the right hand side of the tree to the center of the aluminum cap. Bearings are from the cap to a washer marked OPLS 2219 set in the upper blaze of the tree.