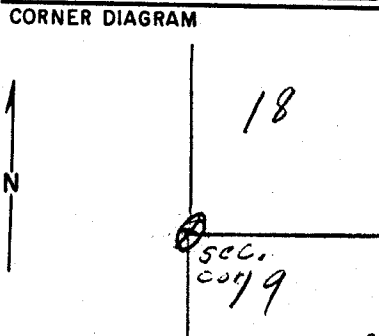


Index File No. N-1 N-1 CORNER RECORD (SEARCH) Tract or Survey No. _____ Cor. SWCOR
 T 3S R. 11E R.D. UNION County UNION No. SEC. 18
 Merid. W-M N.F. W-W State OK



DESCRIBE CORNER MONUMENT FOUND

DESCRIBE BEARING TREES OR OTHER OFFICIAL ACCESSORIES FOUND

28" PP R41E'S IN UPPER SCAR LOWER SCAR GROWN OVER

PHOTO IDENTIFICATION DATA
 Photo No. 7/10/64
 Filed At. ENN 5-120
 Object Ident. _____
 Ident. By _____
 Signature _____

DESCRIBE CORNER LOCATION RELATIVE TO NEAR-BY FEATURES, ALSO HOW TO REACH CORNER

TRICK IS A SECTION BOARD ON MAIN MOSS SPR. RD. FOLLOW FENCE N. TO COR.

PLANE COORDINATE POSITION DATA
 State _____ Zone _____
 X _____
 Y _____
 Estab. By _____
 Agency _____

Signature E.A. Holland Title _____ Division _____ Headquarters _____ Date 6/18/70 707100-52
 REV. 65 5

UNION COUNTY SURVEYOR

Date Received _____

Date Filed 12-21-87

By G. LANGUTZ, DEPUTY

File No. 275-87R

1-2

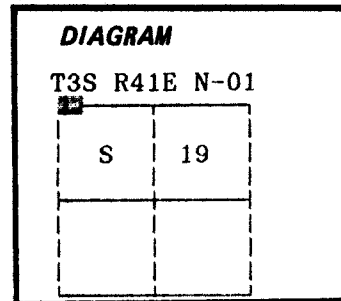
CERTIFIED RECORD OF LAND CORNER MONUMENTATION

History of original corner establishment:

Corner originally established by Alonzo Gesner under GLO contract number 683, dated June 7, 1880. Surveyor General record states:

Set basalt stone 18x15x8 in 12 inches in the ground at the point of intersection for closing corner to secs 18 and 19 marked CC on the East with 3 notches on the N and S sides, from which;

- A yellow pine 14 in diam bears N23°E, 53 lks dist marked CC T3S R41E S18 BT
- A yellow pine 18 in diam bears S50°30'E, 159 lks dist marked CC T3S R41E S19 BT



No record of subsequent monumentation found in Union County survey records.

Description of corner evidence found:

Found a stone 20x14x7 inches with 3 notches visible on opposing sides of the stone. Found stone in a rock jack fence corner approximately 40 feet East of the original placement of the stone.

Found a 18 inch diameter Ponderosa Pine stump N23°E, 53 lks with dead and down tree alongside with scribes visible.

Found a 26 inch diameter Ponderosa Pine S50½°E, 159 lks Live and vigorous with scribes visible.

Distance to the original bearing trees are to the face of the blaze, estimated as if tree were standing on the dead and down tree.

See map of survey dated August, 1988.

UNION COUNTY SURVEYOR

Date Received 9-15-88

Date Filed 9-15-88

By G. LANGLITZ, DEPUTY

File No. 121-88R

Description of monument and accessories I established to perpetuate the original location of this corner:

At the position of the original GLO corner I set a 60d spike. At the true point of intersection, as determined by survey to be S 89°50'39" E, 36.08 feet from the original GLO corner position, I set a 2½" x 30" aluminum pipe with aluminum cap marked as shown, 24 inches in the ground, from which:

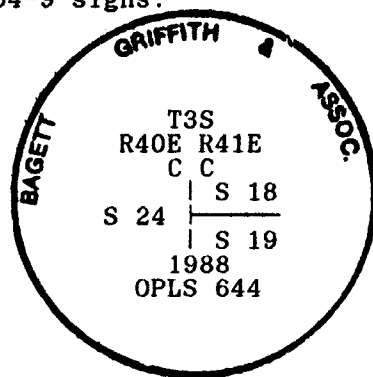
- New BTs:**
- A 14 inch diameter Western Larch bears N46°E, 101.12 feet marked T3S R41E S18 CC BT
 - A 13 inch diameter Douglas Fir bears S41°E, 81.46 feet marked T3S R41E S19 CC BT

Raised a mound of stone around monument, 2 ft. base to top of cap. Marked AM on the original corner stone and buried the stone South and alongside of monument.

Painted a 6 inch red band around all BTs and attached 54-3 and 54-9 signs. Set a steel fencepost approximately 5 feet North with 54-9 and 54-2 signs attached.

I hereby certify that the above corner point was perpetuated as hereon described on August 8, 1988.

Witnesses: Greg Blackman, Jeff Petersen and Rick Robinson



REGISTERED PROFESSIONAL LAND SURVEYOR

OREGON
JULY 10, 1964
DUANE I. GRIFFITH
644

I used a steel tape and magnetic compass in the establishment of new accessories. I used 18° East magnetic declination and the distances are to a 50d spike driven in the right side of the root crown. I attached a brass washer marked OPLS 644 to the BT blaze.

Office of..... County of.....
 State of....., I hereby certify that the within instrument was filed in this office
 for record on the..... day of....., 19.....
 by
 (COUNTY OFFICIAL) (DEPUTY)