

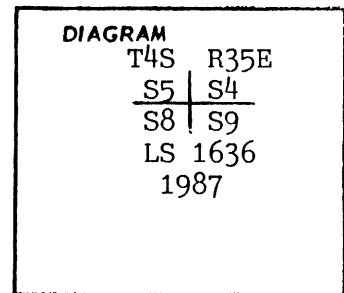
CERTIFIED RECORD OF LAND CORNER MONUMENTATION

E-9

History of original corner establishment:

The original corner was set by Rufus S. Moore in September of 1882 under GLO contract No. 451, as follows:

Set a basalt stone 18" x 10" x 7", 12" into the ground for corner to sections 4, 5, 8 and 9 marked with 5 notches on the south and 4 notches on the east edges. Placed a mound of stones alongside. Pits impracticable.



Description of corner evidence found:

Found the original basalt stone, 17" x 12" x 12", plainly marked with 5 grooves on north face and 4 grooves on the east face. Stone is in the southwest corner of an old fence jack with fences extending north, east and west. An unrecorded spike, with red flagging attached, is set directly under the center of the stone. A small old mound of stones bears south, 3.0 feet.

UNION COUNTY SURVEYOR	
Date Received	12-2-87
Date Filed	12-8-87
By	G. LANGLITZ, DEPUTY
File No.	166-87 R

Description of monument and accessories established to perpetuate the original location of this corner

Moving the corner stone aside, and at the exact point of the unrecorded spike, I set a 2 1/2" x 30" galvanized iron pipe, with a 2 1/2" brass cap attached, 12" into the ground surrounded by a mound of stones to the cap. The brass cap is marked as shown in the diagram, above. From which new bearing trees:
 A 13" ponderosa pine bears S27°E, 154.1 feet scribed "T4S R35E S9 BT" on a single blaze. This tree has a spike, with red flagging attached, driven into the west side, 4 feet above the ground.
 A 13" ponderosa pine bears S73°W, 207.7 feet scribed "T4S R35E S8 BT" on a single blaze. This tree has a spike, with red flagging attached, driven into the north side, one foot above the ground.

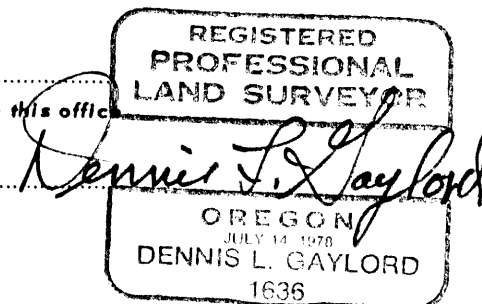
There are no trees to the north of the corner.

Both bearing trees have a 3/4" brass washer, marked "PLS 1636", driven flush with the blaze between the scribed "B" and "T", and bearing tree and land survey monument signs attached above the blaze. The blazes are painted red and a red band is painted on each tree.

A 6' steel post is driven 2 feet north of the corner with a land survey monument sign attached to it.

I hereby certify this corner position was perpetuated as hereon described on October 21, 1987. De: 20°E. Witness: John Bunce.

Office of County Surveyor..... County of Union.....
 State of Oregon....., I hereby certify that the within instrument was filed in this office
 for record on the day of
 by
 (COUNTY OFFICIAL) (DEPUTY)



CERTIFIED RECORD OF LAND CORNER MONUMENTATION

HISTORY OF ORIGINAL CORNER ESTABLISHED:

Corner was established by Rufus S. Moore under GLO contract number 451 dated June 12, 1882. Surveyor General field notes state:

Set a basalt stone 18x10x7 ins. 12 ins. in ground for cor. to secs. 4, 5, 8, and 9 marked with 5 notches on the South and 4 notches on the East. Raised mound of stone alongside, pits impractical.

In 1987 Dennis Gaylord, PLS 1636, found the stone. Union County Monumentation record 166-87R states:

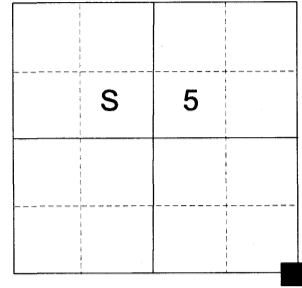
Found the original basalt stone, 17"x12"x12" plainly marked with 5 grooves on North face and 4 grooves on the East face. Stone is in the Southwest corner of an old fence jack with fences extending North, East, and West. An unrecorded spike is set directly under the center of the stone. A small old mound of stone bears South, 3.0 feet. At the exact point of the unrecorded spike, I Set a 2 1/2"x30" galvanized iron pipe, 12" in the ground and surrounded with a mound of stone, with 2 1/2" brass cap, marked as shown,

from which:

A 13" Ponderosa Pine bears S27°E, 154.1 feet scribed T4S R35E S9 BT.

A 13" Ponderosa Pine bears S73°W, 207.7 feet scribed T4S R35E S8 BT.

T 4 S R 35 E E-09



DESCRIPTION OF CORNER EVIDENCE FOUND:

Found a 2 1/2" iron pipe with 2 1/2" brass cap marked as shown below, 10" above ground and in a 3' diam. mound of stone, from which:

A 16" Ponderosa Pine bears South 27° East, a dist. of 154.1 ft., alive but diseased with healed blaze

A 19" Ponderosa Pine bears South 73° West, a dist. of 207.7 ft., alive but diseased with scribes visible on a partially healed blaze

DESCRIPTION OF MONUMENT AND ACCESSORIES I ESTABLISHED TO PERPETUATE THE ORIGINAL LOCATION OF THIS CORNER:

From the iron pipe monument:

NEW BEARING OBJECTS:

A 5/8" x 15" iron pin bears South 78°18' East, a dist. of 15.08 ft., with 1 1/2" aluminum cap marked E RP

A 5/8" x 30" iron pin bears South 2°02' East, a dist. of 16.60 ft., with 1 1/2" aluminum cap marked S RP

A 5/8" x 30" iron pin bears South 85°11' West, a dist. of 14.69 ft., with 1 1/2" aluminum cap marked W RP

A 5/8" x 30" iron pin bears North 3°08' West, a dist. of 14.43 ft., with 1 1/2" aluminum cap marked N RP

Steel fence post with sign approx. 2' North.

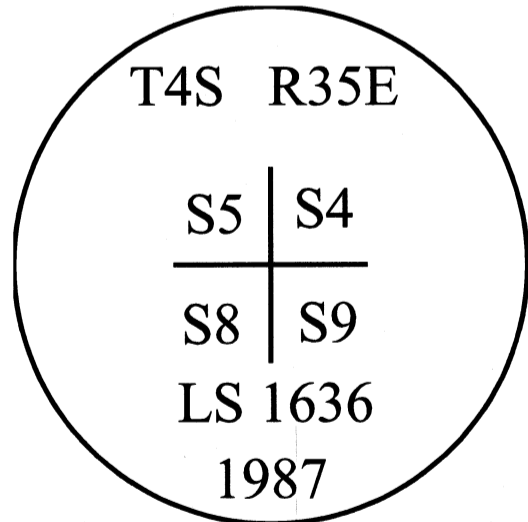
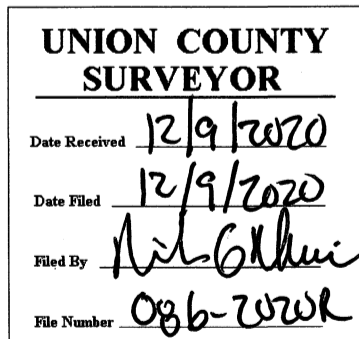
Monument falls approx. 2' East of North/South bearing fence line.

I hereby certify that the corner was perpetuated on December 3, 2020.

Witness: Kyle A. Tucker



Renewal Date: June 30, 2021



I used a Leica GS18 with RTK in the establishment of the new accessories. Basis of Bearing is derived from the Oregon Coordinate Reference System Pendleton-LaGrande. The distances and bearings are to the center of the aluminum caps.

HORIZONTAL CONTROL DATA

UNION COUNTY, OREGON

OREGON STATE PLANE, NORTH ZONE (3601)

STA NAME: 2026046

SECTION CORNER COMMON TO SECTIONS 4, 5, 8 AND 9

TWP. 4 S RGE. 35 E.

GEODETIC COORD: NAD 83(91)

DATE TIED: DECEMBER 3, 2020

LAT: 45 ° 14 ' 24.78637 " N

SURVEYOR: RICK G ROBINSON
OPLS 2219

LONG: 118 ° 26 ' 42.21678 " W

FIRM: BAGETT, GRIFFITH, & BLACKMAN
2006 ADAMS AVENUE
LAGRANDE, OR 97850
(541) 963-6092

SP. COOR: NAD 83(91)

N: 580403.317 INT FT.

E: 8731341.080 INT FT.

TYPE: GPS

THETA: 1 ° 27 ' 26.404418 "

ORDER: SECOND CLASS: 1

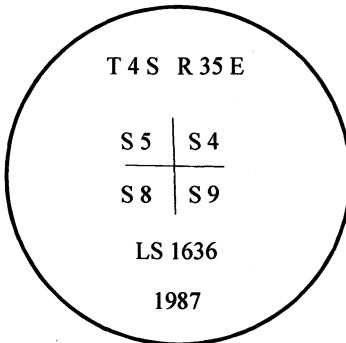
SCALE FACTOR: 0.9998953587

ELEV: 3833.14 US FT.

ELEV: DATUM: NGVD 29

COMMENTS:

2 1/2" iron pipe with 2 1/2" brass cap marked as shown, set in mound of stone



REGISTERED
PROFESSIONAL
LAND SURVEYOR

Rick G. Robinson

OREGON
July 17, 1988
RICK G. ROBINSON
2219

Renewal Date: December 31, 2020

1 METER = 3.2808333333... US FEET = 39.37 INCHES

1 METER = 3.280839895 INT'L FEET OR 1 INCH = 2.54 CM

TO CALCULATE ELEVATION FACTOR (IN THE NORTH AMERICAN CONTINENT)

DIVIDE 20,906,000 BY (20,906,000 + ELLIPSOID ELEV. IN FEET)