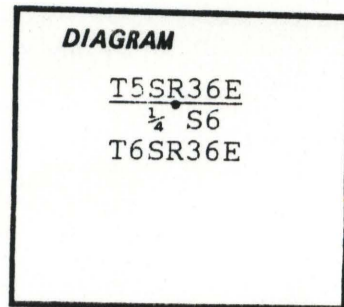


CERTIFIED RECORD OF LAND CORNER MONUMENTATION

Index File No. A-03

History of original corner establishment:

None.



Description of corner evidence found:

None.

Description of monument and accessories established to perpetuate the original location of this corner:

Corner set by single proportioning. I set a 2½"x30" Aluminum capped aluminum pipe rising 6" in a mound of stones. Set steel fencepost 3' North of corner.

Cap is stamped:

T5SR36E
¼ S6
T6SR36E
RLS1848
1987

New BT's:

A 6" D. Fir bears S7¼°E, 17.5 ft., blazed&scribed: ¼S6BT

An 8½" D. Fir bears S70½°E, 17.5 ft., blazed&scribed: ¼S6BT

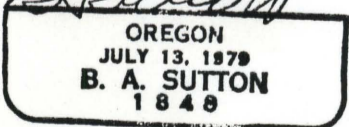
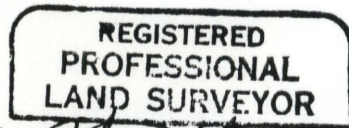
Painted blazes and attached signs as per Standard specifications for Cadastral Surveys, USFS Region 6, March 1982. A ¾" brass disk stamped "RLS 1848" was nailed to the lower end of the blazes.

From the standard ¼ cor. on the South line of sec. 31 on top of a North-South ridge, go East, 700 ft. corner is on Northerly slope, 350 ft. East of a private road, 120 ft. North of a ridge sloping to the East-Northeast.

Compass declination: 18½E

Witness: Jeremy Sutton

I hereby certify that the above described corner monument and/or accessories were established as hereon described on June 30, 1987



UNION COUNTY SURVEYOR
Date Received <u>8-19-87</u>
Date Filed <u>8-24-87</u>
By <u>G. LANGLITZ, DEPUTY</u>
File No. <u>77-87R</u>

Office of..... County of.....
 State of....., I hereby certify that the within instrument was filed in this office
 for record on the..... day of....., 19.....
 by
 (COUNTY OFFICIAL) (DEPUTY)