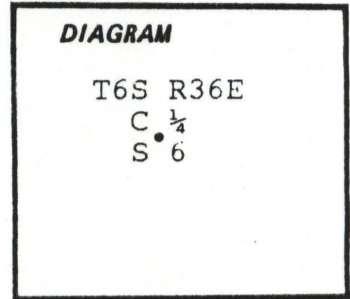


CERTIFIED RECORD OF LAND CORNER MONUMENTATION

Index File No. C-03

History of original corner establishment:

None.



Description of corner evidence found:

None.

Description of monument and accessories established to perpetuate the original location of this corner:

Cap is stamped:  
 Corner set by intersection. I set a 2½"x30" aluminum capped aluminum pipe rising 8" in a mound of stones.  
 Set steel fencepost 3' South of corner.

T6S R36E  
 C  $\frac{1}{4}$   
 S 6  
 RLS1848  
 1987

New BT's:

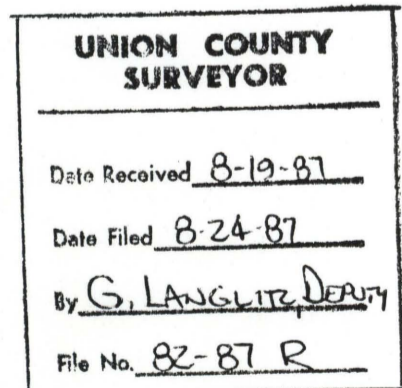
A 6½" W. Larch bears N18°E, 34.1 ft., blazed&scribed: C¼S6BT  
 A 10" W. Larch bears S55½°W, 112.8 ft., blazed&scribed: C¼S6BT

Painted blazes and attached signs as per Standard specifications for Cadastral Surveys, USFS Region 6, March 1982. A ¾" brass disk stamped "RLS 1848" was nailed to the lower end of the blazes.

From its intersection with Rd. 5178123, take Rd. 5178095 200 ft. to end of clear cut.  
 Corner is 1000 ft. West on posted line.

Compass declination: 17¼°E  
 Witness: Jeremy Sutton

*I hereby certify that the above described corner monument and/or accessories were established as hereon described on July 1, 1987.*



Office of..... County of.....  
 State of....., I hereby certify that the within instrument was filed in this office  
 for record on the..... day of....., 19.....  
 ..... by .....  
 (COUNTY OFFICIAL) (DEPUTY)