

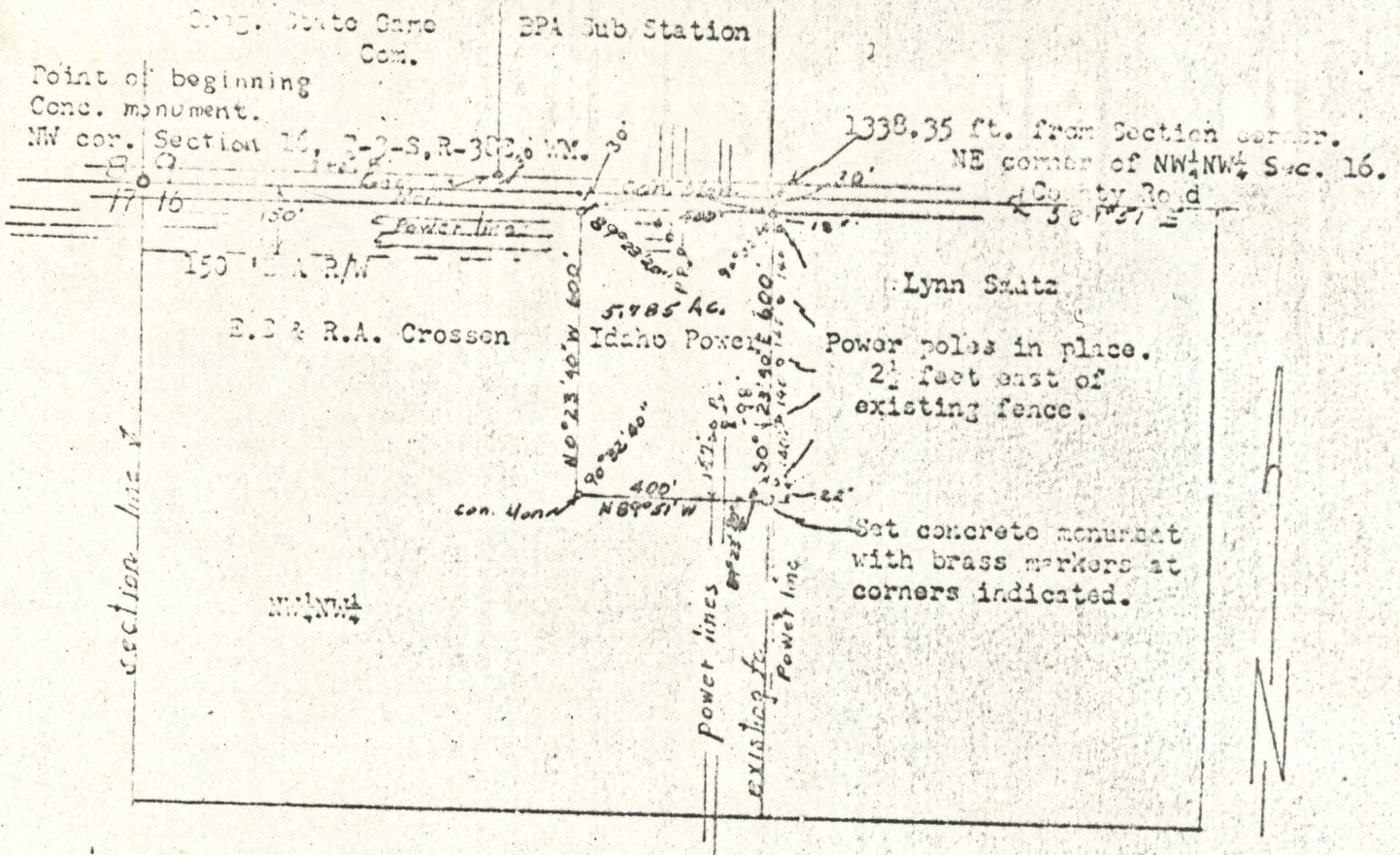
14-64

14-64

Property in Union County at La Grande, Oregon  
E. B. & R. A. Crossen to Idaho Power Company

Date of survey, August 6 & 7 1964

3538 4702



Description;

Beginning at NE corner of NW $\frac{1}{4}$ NW $\frac{1}{4}$  of Section 16, Township 3 South, Range 38 East WM.; which is 1338.35 feet S89°51'E of established marker at the NW corner of said Section 16 and on the north boundary of said section. Thence S 0°23'40"E 30 feet to concrete monument with brass marker, said point being south boundary of County Road.; Thence S0°23'40"E 600 feet to concrete monument with brass marker, being southeast corner of property.; Thence N89°51'W 400 feet to concrete monument set 14" below surface of ground with a brass marker. Thence N0°23'40"W 300 feet to concrete monument with brass marker, said point being on south boundary of County Road.; Thence N 0°23'40"W 30 feet to north boundary of said section 16.; Thence S89°51'E 400 feet to point of beginning. Said description to contain 5.785 acres more-or-less and subject to 30 foot road right-of-way on north side and easements for Transmission lines.

Scale 1" = 400'

REGISTERED  
OREGON  
LAND SURVEYOR

*James D. Deady*

14-64