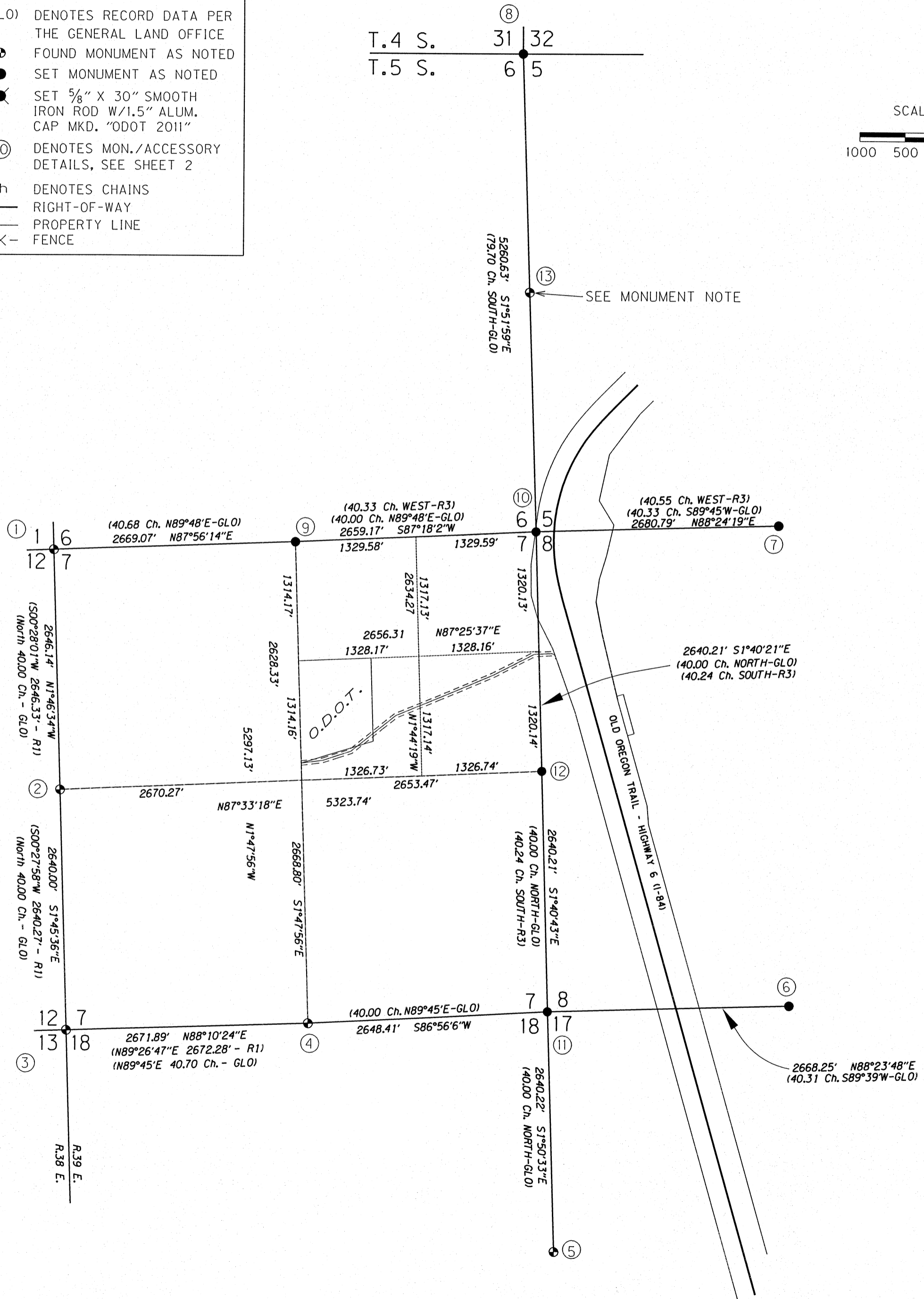
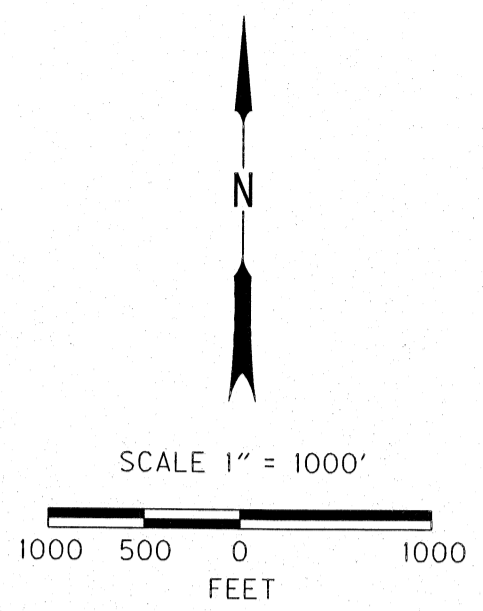


T.5 S., R.39 E., W.M.

LEGEND	
(R1)	RECORD DATA PER UNION COUNTY SURVEY # CS 28-87
(R2)	RECORD DATA PER UNION COUNTY DEED RECORDS VOL. 141, PG. 265
(R3)	RECORD DATA PER UNION COUNTY SURVEY # 13 (OLD BOOK)
(GLO)	DENOTES RECORD DATA PER THE GENERAL LAND OFFICE
⊙	FOUND MONUMENT AS NOTED
●	SET MONUMENT AS NOTED
⊗	SET 5/8" X 30" SMOOTH IRON ROD W/1.5" ALUM. CAP MKD. "ODOT 2011"
⓪	DENOTES MON./ACCESSORY DETAILS, SEE SHEET 2
Ch	DENOTES CHAINS
—	RIGHT-OF-WAY
—	PROPERTY LINE
-X-	FENCE

MONUMENT LIST

PT. NO.	LDP NORTHING	LDP EASTING	DESCRIPTION & REFERENCE DOCUMENTS
1	551485.27	8850949.40	SEE SHEET TWO FOR DETAILS
2	548840.40	8851031.41	SEE SHEET TWO FOR DETAILS
3	546201.65	8851112.49	SEE SHEET TWO FOR DETAILS
4	546286.82	8853783.02	SEE SHEET TWO FOR DETAILS
5	543789.57	8856512.53	SEE SHEET TWO FOR DETAILS
6	546503.09	8859094.85	SEE SHEET TWO FOR DETAILS
7	551781.19	8858952.71	SEE SHEET TWO FOR DETAILS
8	556964.42	8856101.62	SEE SHEET TWO FOR DETAILS
9	551581.34	8853616.74	SEE SHEET TWO FOR DETAILS
10	551706.58	8856272.96	SEE SHEET TWO FOR DETAILS
11	546428.42	8856427.63	SEE SHEET TWO FOR DETAILS
12	549067.50	8856350.30	SEE SHEET TWO FOR DETAILS
13	554337.98	8856187.31	SEE MONUMENT NOTE BELOW



NARRATIVE

**PURPOSE**  
 THIS SURVEY WAS CONDUCTED BY THE OREGON DEPARTMENT OF TRANSPORTATION (ODOT) FOR THE PURPOSE OF RE-ESTABLISHING THE LINES OF SECTION 7, T.5 S., R.39 E., W.M. AND ODOT'S CLOVER CREEK QUARRY OWNERSHIP IN SECTION 7.

**HISTORY**  
 THE EXTERIOR LINES OF T.5 S., R.39 E., W.M. WERE ORIGINALLY SURVEYED BY TIMOTHY W. DAVENPORT UNDER GENERAL LAND OFFICE CONTRACT NO. 102, DATED JULY 20, 1863. THE INTERIOR SUBDIVISION OF T.5 S., R.39 E., W.M. WAS SURVEYED BY DAVID P. THOMPSON UNDER GENERAL LAND OFFICE CONTRACT NO. 103 DATED SEPTEMBER 3, 1863.

**SECTION 7**  
 THE RETRACEMENT OF SECTION 7 STARTED BY ESTABLISHING: 1) A CONTROL NETWORK UTILIZING AN OPUS SOLUTION, 2) STATE PLANE COORDINATES, AND 3) CONVERTING STATE PLANE COORDINATES TO A LOCAL DATUM PLANE (LDP), UTILIZING REAL-TIME KINETIC (RTK) GPS METHODS. WE TIED THE THREE REMONUMENTED PLSS CORNERS ON THE WEST SIDE OF SECTION 7 AND THE SOUTH QUARTER CORNER OF SECTION 7 PER UNION COUNTY SURVEY NO. 28-87. WE THEN CALCULATED AND STAKED SEARCH POSITIONS FOR EACH OF THE REMAINING PLSS CORNERS IN SECTION 7 BASED UPON BOTH GLO FIELD NOTES AND TIES SHOWN ON OREGON STATE HIGHWAY ROW MAP NO. 9B-3-10. THE LINES OF THE PRIOR SURVEYS WERE RETRACED AND A THOROUGH SEARCH WAS MADE FOR ALL CORNERS AND OTHER CALLS OF RECORD.

WE FOUND ACCEPTABLE EVIDENCE TO RE-ESTABLISH THE NORTH QUARTER CORNER OF SECTION 7, BUT DETERMINED THAT THE NORTHEAST, SOUTHEAST AND EAST QUARTER CORNERS WERE ALL LOST. THESE CORNERS WERE ALL RE-ESTABLISHED BY PROPORTIONATE METHODS (CARDINAL EQUIVALENTS) AS REQUIRED IN THE 2010 BLM MANUAL OF SURVEY INSTRUCTIONS.

AT THE QUARTER CORNER COMMON TO SECTIONS 17 AND 18 WE FOUND A REMONUMENTED CORNER PER UNION COUNTY SURVEY NO. 28-87. FOR ALL OTHER PLSS CORNERS SHOWN ON THIS PLAT AND NOT IN SECTION 7, WE FOUND ACCEPTABLE EVIDENCE TO RE-ESTABLISH THE SPECIFIC CORNER POSITION AND REMONUMENTED THEM WITH ACCESSORIES AS NOTED ON SHEET TWO OF THIS PLAT.

AT THE QUARTER CORNER COMMON TO SECTIONS 5 AND 6, WE FOUND A PIPE MONUMENT, ORIGIN UNKNOWN, THAT WE DID NOT USE FOR PRORATING LOST CORNERS IN SECTION 7 (SEE FOLLOWING NOTE).

FOR THE ODOT OWNED QUARRY, WE FOUND A MONUMENT (ORIGIN UNKNOWN) NEAR THE NORTHEAST CORNER OF THE PROPERTY THAT WE DID NOT ACCEPT. WE RE-ESTABLISHED THE WEST, NORTH AND EAST LINES PER RECORD DEED DISTANCES AND QUALIFYING CALLS THAT WE MONUMENTED AS DESCRIBED. THE SOUTH LINE WAS RE-ESTABLISHED AS THE CLOSING LINE. WE SET STEEL POSTS WITH BOUNDARY SIGNS ALONG ALL THE BOUNDARIES OF THE ODOT PROPERTY.

**EQUIPMENT USED**  
 THE GPS PORTION OF THIS SURVEY WAS COMPLETED USING TWO LEICA SYSTEM 1200 DUAL FREQUENCY RECEIVERS, MODEL GRX 1230, ANTENNA MODEL AX 1202. THE TOTAL STATION USED WAS A LEICA 1200 WITH LEICA DATA COLLECTION SOFTWARE.

MONUMENT NOTE

FOUND A BENT 1.25" O.D. IRON PIPE IN NORTH-SOUTH FENCELINE LYING DIAGONALLY, PROTRUDING 4" ABOVE THE GROUND; STRAIGHTENED, REPLACED AND LOCATED AT THE STRAIGHTENED POSITION. ORIGIN UNKNOWN. DID NOT USE TO PRORATE CORNER TO SECTIONS 5, 6, 7 AND 8 (USED FOUND NE CORNER SECTION 6). MONUMENT IS LOCATED 501°52'08"E 2627.83' FROM THE NE CORNER OF SECTION 6.

BASIS OF BEARING & COORDINATES

THE BEARINGS FOR THIS SURVEY ARE GRID BEARINGS DERIVED FROM GPS OBSERVATIONS BASED UPON THE REFERENCE ELLIPSOID WGS84. GRID COORDINATES ARE OREGON COORDINATE SYSTEM - NORTH ZONE; HORIZONTAL DATUM IS NAD83 (GORS 96, EPOCH 2002), TO MATCH GROUND DISTANCES, STATE PLANE COORDINATES WERE REDUCED TO LOCAL DATUM PLANE (LDP) COORDINATES. TO CONVERT BACK TO STATE PLANE COORDINATES, MULTIPLY VALUES BY 0.99972608.

REFERENCES

- UNION CO. SURVEY NO. 13 (OLD BOOK) (08-15-1887) KIMBRELL
- UNION CO. SURVEY NO. 128-87 (11-02-1987) HAMBLETON
- ORIGINAL GLO SURVEY NOTES FOR T.5S. R39E. CONTRACT NOS. 102 & 103
- OREGON STATE HIGHWAY DEPT. DRAWING NO. 5B-35-17
- " " " " " NO. 6B-35-13
- " " " " " NO. 9B-03-10
- " " " " " NO. 1R-5-1162

**UNION COUNTY SURVEYOR**  
 Date Received 2/9/2012  
 Date Filed 2/9/2012  
 By R. Robinson, Deputy  
 File No. 007-2012

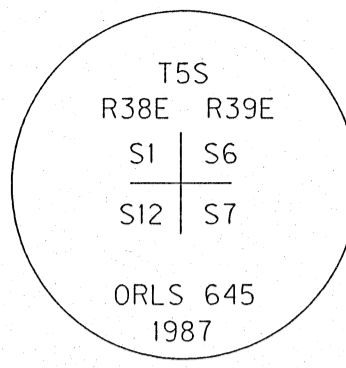
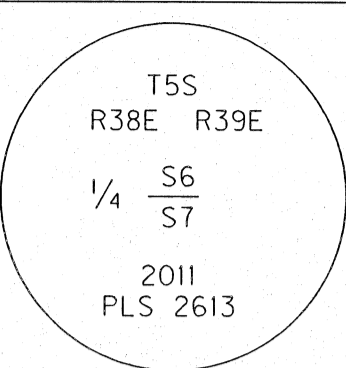
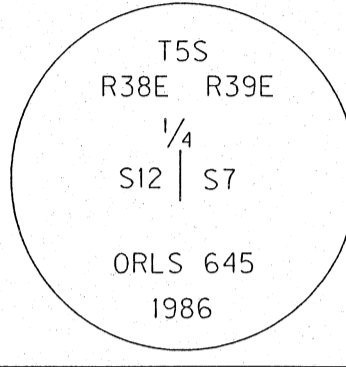
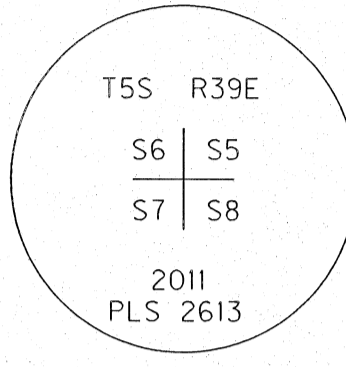
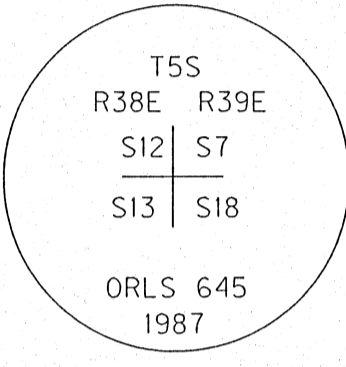
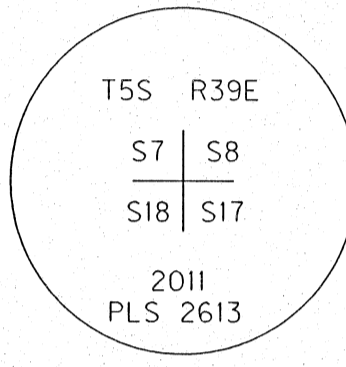
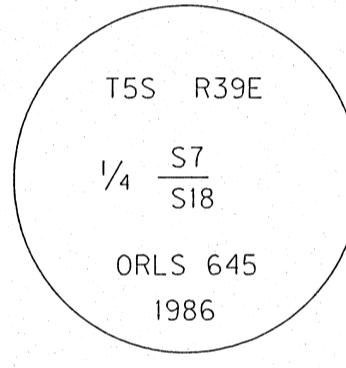
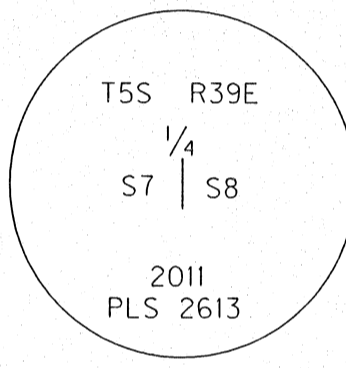
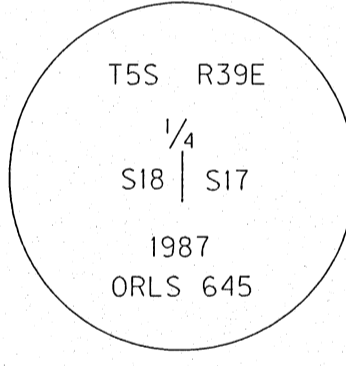
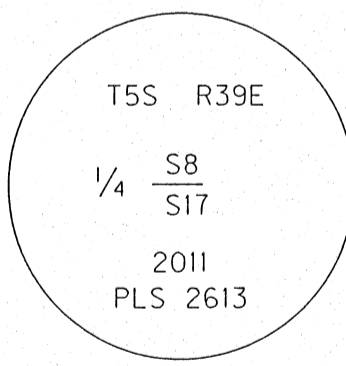
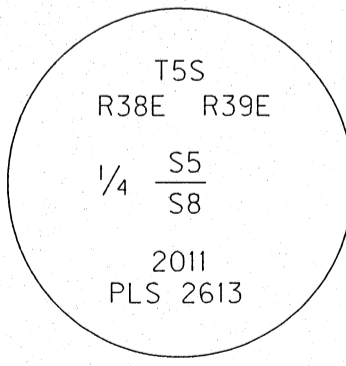
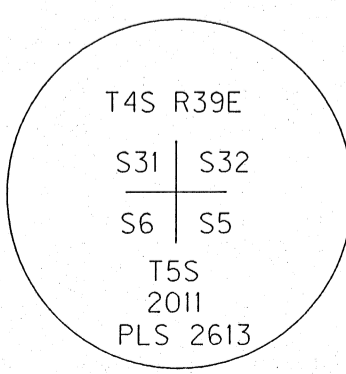
REGISTERED PROFESSIONAL LAND SURVEYOR  
  
 OREGON  
 JULY 20, 1993  
 MARK D. FILSINGER  
 2613  
 EXPIRES: 12/31/2013

OREGON DEPARTMENT OF TRANSPORTATION  
  
 ENGLISH  
 CLOVER CREEK QUARRY BOUNDARY SURVEY  
 LOCATED IN THE N.E. QUARTER OF SECTION 7, T.5 S., R.39 E., W.M.  
 UNION COUNTY, OREGON  
 FOR ODOT REGION 5  
 3012 ISLAND AVENUE  
 LA GRANDE, OR 97850  
 FEBRUARY 8, 2012  
 SCALE: 1" = 1000'  
 SHEET 1 OF 3

SURVEY NUMBER 007-2012

NARRATIVE

T.5 S., R.39 E., W.M.

<p>①</p> 	<p>FOUND 2.5" DIAMETER ALUMINUM CAP ON 2.5" DIAMETER ALUMINUM PIPE AT GROUND LEVEL WITH MOUND OF STONE IN FENCE CORNER PER UNION COUNTY SURVEY NO. 28-87.</p>	<p>⑨</p> 	<p>FOUND 3.5' DIAMETER EMBEDDED MOUND OF STONE, FITS WELL WITH KIMBRELL SURVEY, UNION COUNTY SURVEY NO. 13 (OLD BOOK).</p> <p>SET 3.25" ALUMINUM CAP ON A 5/8" X 30" IRON ROD DRIVEN 16" INTO THE GROUND AT THE CENTER OF THE MOUND OF STONE WITH A FENCE POST DRIVEN ALONGSIDE, FROM WHICH BEARS:</p> <p>1) A SILVER BERNTSEN "DEEP-1" MAGNETIC MARKER BURIED 6" IN THE GROUND (TOP) BEARS N 52°E 6.2 FT.                  2) A PINK BERNTSEN "DEEP-1" MAGNETIC MARKER BURIED 6" IN THE GROUND (TOP) BEARS S 50°E 9.0 FT.                  3) A 5/8" X 30" IRON ROD DRIVEN 19" INTO THE GROUND WITH A 1.5" ALUMINUM CAP STAMPED "ODOT SW" BEARS S 39°W 19.6 FT.                  4) A 5/8" X 30" IRON ROD DRIVEN 15" INTO THE GROUND WITH A 1.5" ALUMINUM CAP STAMPED "ODOT NW" BEARS N 49°W 13.1 FT.</p>
<p>②</p> 	<p>FOUND 2.5" DIAMETER ALUMINUM CAP ON 2.5" DIAMETER ALUMINUM PIPE UP 12" WITH MOUND OF STONE IN OLD FENCE LINE CORNER PER UNION COUNTY SURVEY NO. 28-87.</p>	<p>⑩</p> 	<p>CORNER NOT FOUND, SET BY DOUBLE PROPORTIONATE MEASUREMENT.</p> <p>SET 3.25" ALUMINUM CAP ON A 5/8" X 30" IRON ROD DRIVEN 29" IN THE GROUND AND BUILT MOUND OF STONE. PLACED FENCE POST ALONGSIDE MOUND OF STONE, FROM WHICH BEARS:</p> <p>1) A 5/8" X 30" SMOOTH IRON ROD DRIVEN 30" INTO THE GROUND WITH A 1.5" ALUMINUM CAP STAMPED "ODOT NE" BEARS N 56°E 53.5 FT.                  2) A 5/8" X 30" SMOOTH IRON ROD DRIVEN 30" INTO THE GROUND WITH A 1.5" ALUMINUM CAP STAMPED "ODOT SE" BEARS S 22°E 76.5 FT.                  3) A 5/8" X 30" SMOOTH IRON ROD DRIVEN 30" INTO THE GROUND WITH A 1.5" ALUMINUM CAP STAMPED "ODOT SW" BEARS S 44°W 13.9 FT.                  4) A 5/8" X 30" SMOOTH IRON ROD DRIVEN 30" INTO THE GROUND WITH A 1.5" ALUMINUM CAP STAMPED "ODOT NW" BEARS N 44°W 10.1 FT.</p>
<p>③</p> 	<p>FOUND 2.5" DIAMETER ALUMINUM CAP ON 2.5" DIAMETER ALUMINUM PIPE UP 4" WITH MOUND OF STONE IN OLD EAST-WEST FENCE LINE PER UNION COUNTY SURVEY NO. 28-87.</p>	<p>⑪</p> 	<p>CORNER NOT FOUND, SET BY DOUBLE PROPORTIONATE MEASUREMENT.</p> <p>SET 3.25" ALUMINUM CAP ON A 5/8" X 30" IRON ROD DRIVEN 43" IN THE GROUND (CAP BURIED 13 INCHES). PLACED CLEAR BERNTSEN DEEP-1 MAGNETIC MARKER ALONGSIDE, FROM WHICH BEARS:</p> <p>1) A FOUND 5/8" X 30" SMOOTH IRON ROD DRIVEN 21" INTO THE GROUND WITH A 1.5" ALUMINUM CAP STAMPED "NWP - AB 2 1094+84" BEARS N 57°E 65.1 FT.                  2) A 5/8" X 30" SMOOTH IRON ROD DRIVEN 30" INTO THE GROUND WITH A 1.5" ALUMINUM CAP STAMPED "ODOT NW" BEARS N 71°W 57.8 FT.                  3) A PINK BERNTSEN DEEP-1 MAGNETIC MARKER BURIED 6" INCHES IN THE GROUND (TOP) BEARS S 59°E 21.1 FT.                  4) A BLUE BERNTSEN DEEP-1 MAGNETIC MARKER BURIED 6" INCHES IN THE GROUND (TOP) BEARS S 42°W 16.2 FT.</p>
<p>④</p> 	<p>FOUND 2.5" DIAMETER ALUMINUM CAP ON 2.5" DIAMETER ALUMINUM PIPE AT GROUND LEVEL WITH MOUND OF STONE NORTH OF SCATTERED ROCK JACK IN OLD EAST-WEST FENCE LINE PER UNION COUNTY SURVEY NO. 28-87.</p>	<p>⑫</p> 	<p>CORNER NOT FOUND, SET BY SINGLE PROPORTIONATE MEASUREMENT.</p> <p>SET 3.25" ALUMINUM CAP ON A 2.5" X 30" FLARED ALUMINUM PIPE BURIED 24" INTO THE GROUND AND PLACED CLEAR BERNTSEN "DEEP-1" MAGNETIC MARKER ALONGSIDE. PLACED A FENCE POST ALONGSIDE MOUND OF STONE, FROM WHICH BEARS:</p> <p>1) A 5/8" X 30" IRON ROD DRIVEN 30" INTO THE GROUND WITH A 1.5" ALUMINUM CAP STAMPED "ODOT SW" BEARS S 49°W 20.6 FT.                  2) A 5/8" X 30" IRON ROD DRIVEN 29" INTO THE GROUND WITH A 1.5" ALUMINUM CAP STAMPED "ODOT NW" BEARS N 52°W 12.0 FT.                  3) A PINK BERNTSEN DEEP-1 MAGNETIC MARKER BURIED 6" IN THE GROUND (TOP) BEARS S 53°E 18.1 FT.                  4) A SILVER BERNTSEN DEEP-1 MAGNETIC MARKER BURIED 6" IN THE GROUND (TOP) BEARS N 45°E 9.2 FT.</p>
<p>⑤</p> 	<p>FOUND 2.5" DIAMETER ALUMINUM CAP ON 2.5" DIAMETER ALUMINUM PIPE UP 14" IN MOUND OF STONE PER UNION COUNTY SURVEY NO. 28-87.</p>		
<p>⑥</p> 	<p>FOUND 4' DIAMETER MOUND OF STONE WITH WOOD POST REMNANTS IN CENTER, FITS TIE AS SHOWN ON STATE HIGHWAY RIGHT-OF-WAY MAP 6B-35-13.</p> <p>SET 3.25" ALUMINUM CAP ON A 5/8" X 30" IRON ROD DRIVEN 20" IN THE GROUND AT CENTER OF MOUND OF STONE WITH A FENCE POST PLACED ALONGSIDE, FROM WHICH BEARS:</p> <p>1) A SILVER BERNTSEN "DEEP-1" MAGNETIC MARKER BURIED 4" IN THE GROUND (TOP) BEARS N 45°E 7.6 FT.                  2) A PINK BERNTSEN "DEEP-1" MAGNETIC MARKER BURIED 4" IN THE GROUND (TOP) BEARS S 46°E 7.9 FT.                  3) A 5/8" X 30" SMOOTH IRON ROD DRIVEN 20" INTO THE GROUND WITH A 1.5" ALUMINUM CAP STAMPED "ODOT SW" BEARS S 32°W 10.0 FT.                  4) A 5/8" X 30" SMOOTH IRON ROD DRIVEN 19" INTO THE GROUND WITH A 1.5" ALUMINUM CAP STAMPED "ODOT NW" BEARS N 70°W 11.0 FT.</p>		
<p>⑦</p> 	<p>FOUND 4' DIAMETER MOUND OF STONE WITH LARGE STONES AND FOUND POINTED 14" END OF WOOD STAKE IN CENTER OF MOUND BURIED 15" DEEP.</p> <p>SET 3.25" ALUMINUM CAP ON A 2.5" X 30" FLARED ALUMINUM PIPE BURIED 15" INTO THE GROUND AT CENTER OF MOUND OF STONE AND PLACED CLEAR BERNTSEN "DEEP-1" MAGNETIC MARKER ALONGSIDE. PLACED FENCE POST ALONGSIDE MOUND OF STONE, FROM WHICH BEARS:</p> <p>1) AN ORANGE BERNTSEN "DEEP-1" MAGNETIC MARKER BURIED 4" IN THE GROUND (TOP) BEARS N 52°W 8.0 FT.                  2) A BLUE BERNTSEN "DEEP-1" MAGNETIC MARKER BURIED 4" IN THE GROUND (TOP) BEARS S 44°W 10.2 FT.                  3) A 5/8" X 30" IRON ROD DRIVEN 16" INTO THE GROUND WITH A 1.5" ALUMINUM CAP STAMPED "ODOT SE" BEARS S 43°E 9.2 FT.                  4) A 5/8" X 30" IRON ROD DRIVEN 23" INTO THE GROUND WITH A 1.5" ALUMINUM CAP STAMPED "ODOT NE" BEARS N 38°E 9.0 FT.</p>		
<p>⑧</p> 	<p>FOUND 4' DIAMETER MOUND OF STONE WITH ROTTED OFF WOOD POST AT CENTER, POST LAYING ON GROUND.</p> <p>SET 3.25" ALUMINUM CAP ON A 5/8" X 30" IRON ROD DRIVEN 26" INTO THE GROUND AT CENTER OF MOUND OF STONE AND PLACED CLEAR BERNTSEN "DEEP-1" MAGNETIC MARKER ALONGSIDE. PLACED FENCE POST ALONGSIDE MOUND OF STONE, FROM WHICH BEARS:</p> <p>1) AN ORANGE BERNTSEN "DEEP-1" MAGNETIC MARKER BURIED 8" IN THE GROUND (TOP) BEARS N 40°W 10.1 FT.                  2) A BLUE BERNTSEN "DEEP-1" MAGNETIC MARKER BURIED 6" IN THE GROUND (TOP) BEARS S 57°W 8.4 FT.                  3) A 5/8" X 30" IRON ROD DRIVEN 26" INTO THE GROUND WITH A 1.5" ALUMINUM CAP STAMPED "ODOT NE" BEARS N 39°E 10.0 FT.                  4) A 5/8" X 30" IRON ROD DRIVEN 28" INTO THE GROUND WITH A 1.5" ALUMINUM CAP STAMPED "ODOT SE" BEARS S 34°E 10.2 FT.</p>		

NOTE  
ACCESSORIES WERE MEASURED WITH A STEEL TAPE AND HAND COMPASS SET AT 19° EAST DECLINATION.

**UNION COUNTY SURVEYOR**

Date Received 2/9/2012

Date Filed 2/9/2012

By R. ROBINSON, DEPUTY

File No. 007-2012

REGISTERED PROFESSIONAL LAND SURVEYOR

*Mark D. Filsinger*

OREGON  
JULY 20, 1993  
MARK D. FILSINGER  
2613

EXPIRES: 12/31/2013

OREGON DEPARTMENT OF TRANSPORTATION

ENGLISH

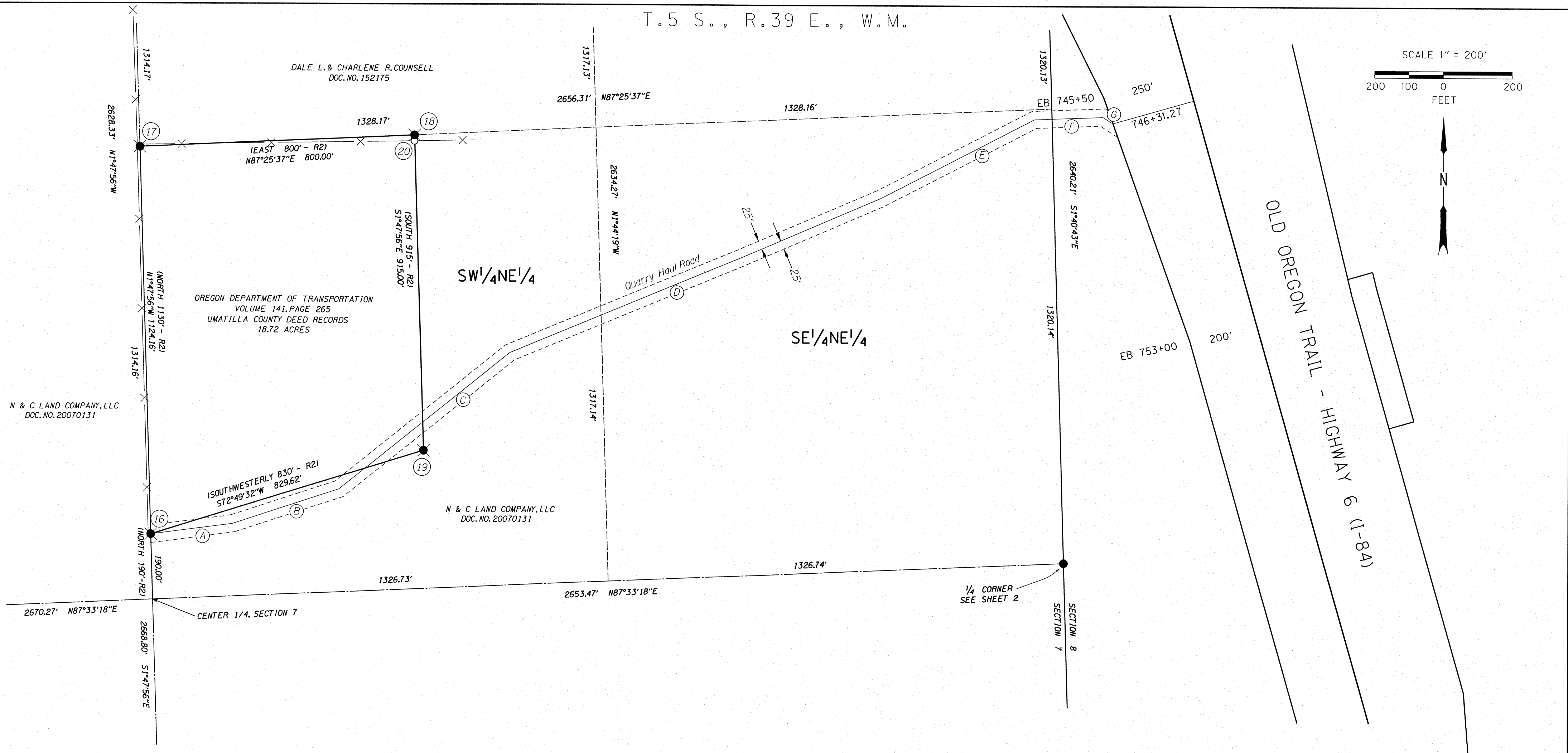
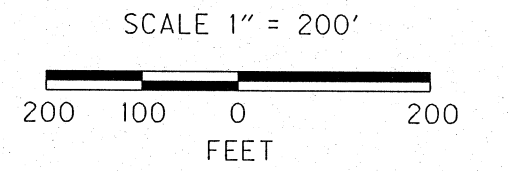
CLOVER CREEK QUARRY BOUNDARY SURVEY  
LOCATED IN THE N.E. QUARTER OF  
SECTION 7, T.5 S., R.39 E., W.M.  
UNION COUNTY, OREGON

FOR ODOT REGION 5  
3012 ISLAND AVENUE  
LA GRANDE, OR 97850

FEBRUARY 8, 2012  
SCALE: N/A  
SHEET 2 OF 3

SURVEY NUMBER 007-2012

T.5 S., R.39 E., W.M.



**LEGEND**

- (R1) RECORD DATA PER UNION COUNTY SURVEY # CS 28-87
- (R2) RECORD DATA PER UNION COUNTY DEED RECORDS VOL. 141, PG. 265
- (R3) RECORD DATA PER UNION COUNTY SURVEY # 13 (OLD BOOK)
- (GLO) DENOTES RECORD DATA PER THE GENERAL LAND OFFICE
- SET MONUMENT AS NOTED
- ⊙ SET 5/8" X 30" SMOOTH IRON ROD W/1.5" ALUM. CAP MKD. "ODOT 2011"
- ⓐ DENOTES MON./ACCESSORY DETAILS, SEE SHEET 2
- ⓑ DENOTES CENTERLINE DIMENSION, SEE TABLE
- Ch DENOTES CHAINS
- RIGHT-OF-WAY
- PROPERTY LINE
- X- FENCE

**MONUMENT LIST**

PT. NO.	LDP NORTHING	LDP EASTING	DESCRIPTION & REFERENCE DOCUMENTS
16	549144.22	8853693.28	SET 5/8" X 30" SMOOTH IRON ROD WITH 1.5" DIAMETER ALUMINUM CAP STAMPED "ODOT 2011"
17	550267.83	8853657.99	SET 5/8" X 30" SMOOTH IRON ROD WITH 1.5" DIAMETER ALUMINUM CAP STAMPED "ODOT 2011"
18	550303.74	8854457.18	SET 5/8" X 30" SMOOTH IRON ROD WITH 1.5" DIAMETER ALUMINUM CAP STAMPED "ODOT 2011"
19	549389.19	8854485.91	SET 5/8" X 30" SMOOTH IRON ROD WITH 1.5" DIAMETER ALUMINUM CAP STAMPED "ODOT 2011"
20	550286.80	8854456.94	FOUND 5/8" IRON ROD, NO CAP, S 00°48'42"W 16.94' FROM NE CORNER, ORIGIN UNKNOWN

**ODOT HAUL ROAD CENTERLINE**

NO.	GRID BEARING	DISTANCE	RECORD BEARING	RECORD DISTANCE	REF. DOCUMENT
A	N82°35'34"E	240.00'	N84°23'30"E	240.00'	141 D 265
B	N71°51'34"E	325.00'	N73°39'30"E	325.00'	141 D 265
C	N51°21'34"E	635.00'	N53°09'30"E	635.00'	141 D 265
D	N67°30'34"E	715.00'	N69°18'30"E	715.00'	141 D 265
E	N62°43'21"E	502.31'	N64°31'17"E	502.31'	1R-5-1162
F	N87°45'34"E	200.00'	N89°33'30"E	200.00'	141 D 265
G	S56°56'26"E	34.00'	S55°08'30"E	141 D 265	

**UNION COUNTY SURVEYOR**  
 Date Received 2/9/2012  
 Date Filed 2/9/2012  
 By R. ROBINSON DEWITT  
 File No. 007-2012

REGISTERED PROFESSIONAL LAND SURVEYOR  
  
 OREGON  
 JULY 20, 1993  
 MARK D. FILSINGER  
 2613  
 EXPIRES: 12/31/2013

OREGON DEPARTMENT OF TRANSPORTATION  
  
 ENGLISH CLOVER CREEK QUARRY BOUNDARY SURVEY  
 LOCATED IN THE N.E. QUARTER OF  
 SECTION 7, T.5 S., R.39 E., W.M.  
 UNION COUNTY, OREGON  
 FOR ODOT REGION 5  
 3012 ISLAND AVENUE  
 LA GRANDE, OR 97850  
 FEBRUARY 8, 2012  
 SCALE: 1" = 200'  
 SHEET 3 OF 3

**SURVEY NUMBER 007-2012**