

VICINITY MAP
NOT TO SCALE

BASIS OF BEARINGS

BEARINGS ARE BASED UPON THE OREGON COORDINATE SYSTEM - NORTH ZONE NAD 83 (CORS 96), RELATIVE TO PROJECT CONTROL POINTS OBSERVED BY GPS MEASUREMENT USING THE ORGN CORS CONTROL NETWORK.

ALL POINTS DERIVED USING THE ORGN WERE SUBSEQUENTLY CONVERTED TO GROUND COORDINATE VALUES USING THE FOLLOWING METHOD:

A COMBINED SCALE FACTOR FOR THE SITE WAS CALCULATED USING AN AVERAGE COMBINED SCALE FACTOR.

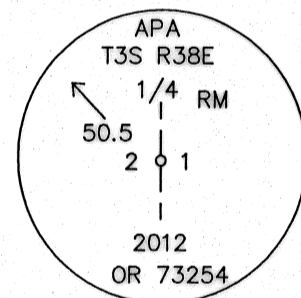
COMBINED SCALE FACTOR = 0.999771272328
GRID TO GROUND = 1.000228782

GRID COORDINATES WERE SCALED BY THIS FACTOR AROUND BASE POINT OF APA CONTROL POINT #524 - N612607.0890 E8841321.779

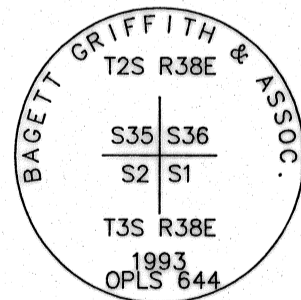
BEARINGS SHOWN ARE GRID BEARINGS. DISTANCES ARE BASED ON GROUND MEASUREMENT FROM THE GROUND COORDINATE SURVEY CONTROL POINTS.

CORNER NOTES

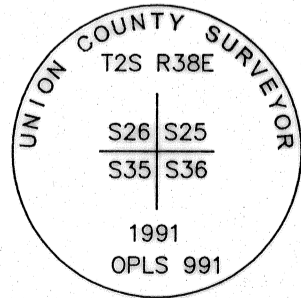
10902 FOUND 5/8" REBAR WITH 2" BRASS DISK FOR REFERENCE MONUMENT MARKED AS SHOWN. SEE DETAIL C SHEET 3 AND CS 034-2012.



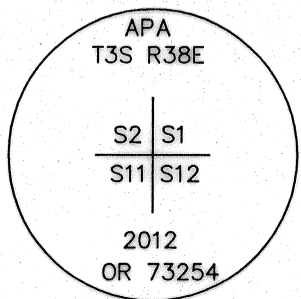
10901 FOUND 2 1/2" BRASS CAP IN MONUMENT CASE MARKED AS SHOWN. (SEE MONUMENTATION RECORD 003-1993 R)



10556 FOUND 2 1/2" ALUMINUM CAP IN MONUMENT CASE MARKED AS SHOWN. (SEE MONUMENTATION RECORD 011-1991 R)



60785 FOUND 5/8" BY 30" COPPER CLAD SMOOTH IRON ROD WITH 2 1/2" BRASS DISK IN MONUMENT CASE AND MARKED AS SHOWN. SEE DETAIL C SHEET 3 AND CS 034-2012.



SURVEY NARRATIVE

THIS SURVEY WAS PERFORMED AT THE REQUEST OF UNION COUNTY FOR THE PURPOSE OF LOCATING, MONUMENTING, AND LEGALIZING THE LOCATION OF COUNTY ROAD 30, PIERCE ROAD, IN PORTIONS OF SECTIONS 1 AND 2, T. 3 S. R. 38E AND SECTIONS 35 AND 36, T 2 S. R. 38 E., W.M.

UNION COUNTY ROAD RECORDS SHOW A RIGHT-OF-WAY PETITIONED, CREATED AND ORDERED OPEN IN COMMISSIONER'S JOURNAL A, PAGE 284. THE SURVEY NOTES FOR THAT ACTION ARE DATED MARCH OF 1870. ALTHOUGH NO WIDTH IS MENTIONED, OREGON LAWS 1860, PAGE 36, SECTION 10 STATE THAT "ALL COUNTY ROADS SHALL BE SIXTY FEET IN WIDTH, UNLESS THE COUNTY COURT SHALL, UPON PRAYER OF THE PETITIONERS FOR THE SAME, DETERMINE A LESSER NUMBER OF FEET IN THE POINT OF WIDTH". NO EVIDENCE WAS FOUND OF A LESSER WIDTH BEING PETITIONED AND THIS SURVEY USES SIXTY FEET AS THE WIDTH FOR LEGALIZATION.

THE POINT OF BEGINNING FOR THE PETITION FOR COUNTY ROAD NO. 30 IS AT A POINT ON THE COUNTY ROAD LEADING FROM LA GRANDE TO HENDERSHOTS POINT (GEKELER LANE) ONE MILE WEST OF THE TOWNSHIP LINE BETWEEN TOWNSHIP 3 SOUTH IN RANGE 38 EAST AND TOWNSHIP 3 SOUTH IN RANGE 39 EAST. THENCE NORTH ON THE SECTION LINE TO THE NORTHWEST CORNER OF THE SOUTHWEST QUARTER OF SECTION 25 IN TOWNSHIP 2 SOUTH OF RANGE 38 EAST. THE CENTERLINE OF THE ROADWAY IS WESTERLY OF THE SECTION LINE AND VARIES FROM 0 TO 14 FEET WESTERLY OF THE SECTION LINE FOR A LENGTH OF APPROXIMATELY 5000 FEET. THIS SECTION LINE HAS BEEN PERPETUATED BY REMONUMENTATION OF THE SECTION CORNER POSITIONS AND THOSE MONUMENTS HAVE BEEN ACCEPTED AS THE BEST REPRESENTATION OF THE SECTION LINE. THE AREA WHERE THE CENTERLINE OF THE ROADWAY IS THE FARTHEST DISTANCE AWAY FROM THE SECTION LINE IS AT THE BRIDGE OVER THE GRANDE RONDE RIVER AS SHOWN ON SHEET 2.

FOR THESE REASONS, THIS SITUATION MEETS THE REQUIREMENTS FOR ROAD LEGALIZATION ACCORDING TO ORS 368.201 (3) "IF THE ROAD AS TRAVELED AND USED FOR 10 YEARS OR MORE DOES NOT CONFORM TO THE LOCATION OF A ROAD DESCRIBED IN THE COUNTY RECORDS".

A TOPOGRAPHIC FIELD SURVEY WAS CONDUCTED AT THE SITE IN OCTOBER AND NOVEMBER, 2010. THE AREA OF SURVEY INCLUDES THE ROADWAY AND OTHER FEATURES FOR THE FULL RIGHT-OF-WAY WIDTH. SURVEY MEASUREMENTS INCLUDED THE LAYOUT OF A HORIZONTAL CONTROL NETWORK (UTILIZING GPS/RTK METHODS) ALONG THE DESCRIBED ROADWAYS. ADDITIONAL TOPOGRAPHIC MAPPING OF UTILITIES, EDGE OF ASPHALT, GROUND, ETC. WAS PERFORMED BY A COMBINATION OF TRADITIONAL TOTAL STATION MAPPING AND GPS RTK METHODS.

PUBLIC LAND CORNER AND PROPERTY CORNER POSITIONS WERE CONFIRMED USING THE OREGON REALTIME GPS NETWORK (ORGN) GPS OBSERVATIONS. THE EXISTING ROAD CENTERLINE, WAS LOCATED BY SAID TOPOGRAPHIC SURVEY, AND USED TO CREATE A DESIGN CENTERLINE FOR THE IMPROVEMENTS COMPLETED IN 2011, ACCORDING TO THE CONSTRUCTION PLANS PREPARED FOR UNION COUNTY BY ANDERSON PERRY & ASSOCIATES DATED MARCH 8, 2011. THE CENTERLINE P.I.'S AS SHOWN ON THE PLANS REFLECT A LEGALIZED RIGHT-OF-WAY, 60 FEET IN WIDTH, CENTERED UPON SAID CENTERLINE. THE LEGALIZATION IS BOUNDED ON THE NORTH BY THE SOUTH LINE OF PARTITION PLAT 2009-0014 AND ON THE SOUTH BY THE NORTH RIGHT-OF-WAY LINE OF THE COVE HIGHWAY (STATE HIGHWAY NO. 237) WHICH IS THE SOUTH LINE OF THE NORTH ONE-HALF OF SECTIONS 1 AND 2 OF T. 3 S. R. 38E.

MONUMENTS WERE SET ALONG THE RIGHT-OF-WAY AT ALL POINTS OF INTERSECTION, AT 1000 FOOT INTERVALS ON TANGENTS, AND OTHER LOCATIONS AS SHOWN ON THE DRAWING. TIES ARE SHOWN TO FOUND MONUMENTATION IN THE AREA, HOWEVER THE RIGHT-OF-WAY LINES OF INTERSECTING STREETS AS WELL AS ADJOINING INDIVIDUAL PROPERTY LINES HAVE NOT BEEN RESOLVED.

REFERENCES

- (R1) UNION COUNTY MAP OF SURVEY CS 034-2012 (PIERCE ROAD RIGHT OF WAY SURVEY)
- (R2) UNION COUNTY PARTITION PLAT 2009-0014
- (R3) MONUMENTATION RECORD 003-1993 R
- (R4) MONUMENTATION RECORD 011-1991 R
- (R5) SEE MONUMENTATION RECORDS FILED IN CONJUNCTION WITH CS 034-2012
- (R6) SEE MONUMENTATION RECORD FILED IN CONJUNCTION WITH CS 034-2012

LEGEND

- INDICATES SECTION CORNER (SEE CORNER NOTES)
- INDICATES ONE-QUARTER SECTION CORNER (SEE CORNER NOTES)
- 10901 CORNER NOTE DESIGNATION (SEE CORNER NOTES SHEET 1, SEE COORDINATE TABLE SHEET 3)
- 200 COORDINATE POINT VALUE, SEE TABLE SHEET 3
- ▲ INDICATES CALCULATED POINT FOR CENTERLINE ROAD PI (NOTHING SET)
- INDICATES SET 5/8" X 30" REBAR WITH ALUMINUM CAP STAMPED APA OR 73254 WA 30425
- ⊕ INDICATES FOUND MONUMENT AS DESCRIBED HEREON
- INDICATES RIGHT-OF-WAY LINE
- INDICATES SECTION LINE
- INDICATES LEGALIZED CENTERLINE OF RIGHT-OF-WAY
- INDICATES EDGE OF ASPHALT PAVING
- INDICATES APPROXIMATE PROPERTY LINE

REGISTERED
PROFESSIONAL
LAND SURVEYOR

THOMAS E. BATTEY
OREGON
JULY 15, 2003
THOMAS E. BATTEY
73254 LS
RENEWS 12/31/13
DATED: 12/14/12

UNION COUNTY
SURVEYOR

Date Received 12/17/12

Date Filed 12/17/12

By P. Rowson, DGM

File No. 039-2012

MAP OF SURVEY
PIERCE ROAD LEGALIZATION
SECTIONS 35 & 36, T2S, R38E, W.M.
SECTIONS 1 & 2, T3S, R38E, W.M.

UNION COUNTY, OREGON

SCALE: NO SCALE

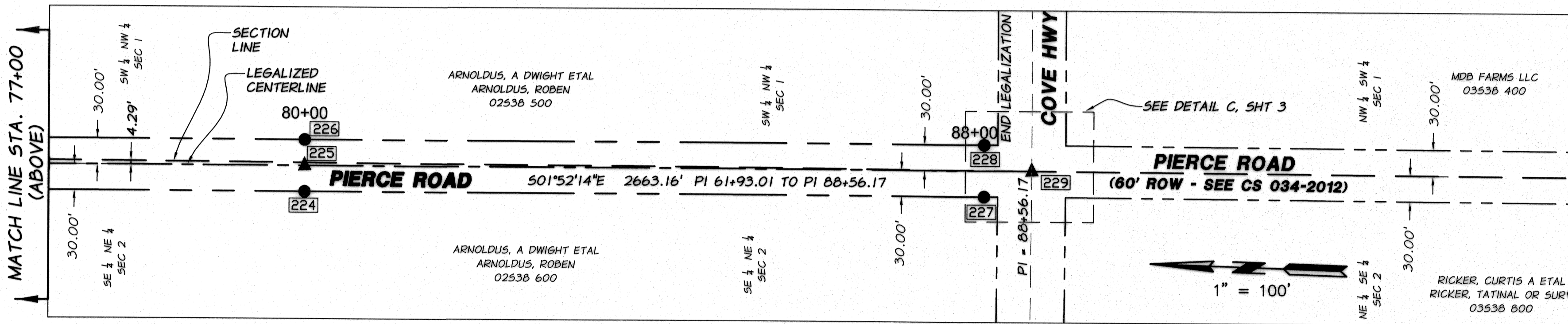
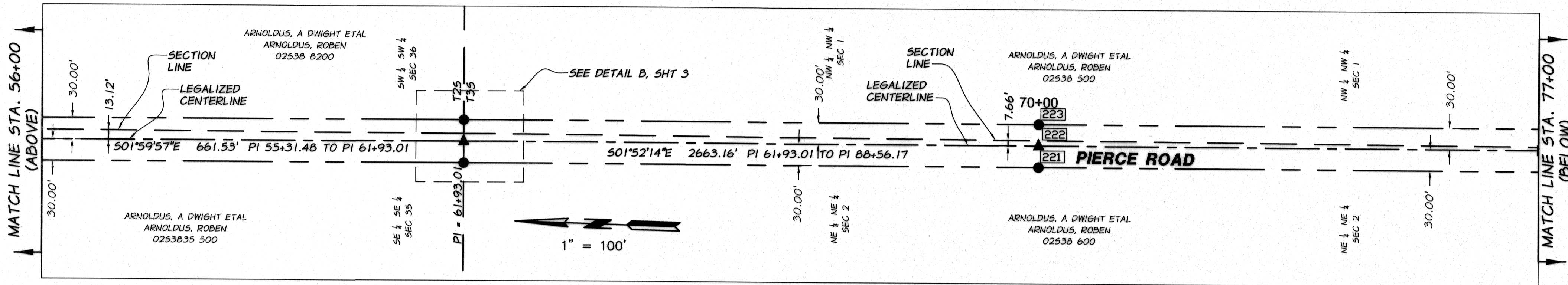
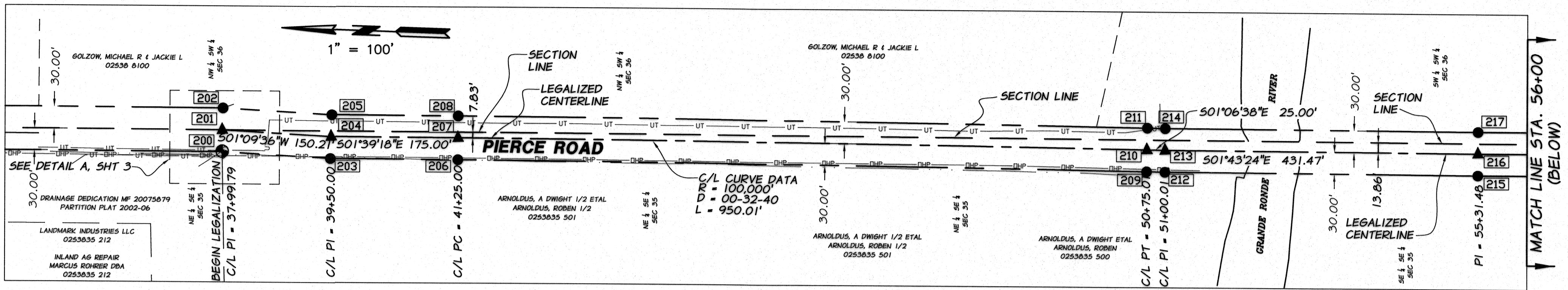
DATE: NOV. 2012

JOB NO. 694-44

anderson perry
associates, inc.
ENGINEERING SURVEYING NATURAL RESOURCES
LA GRANDE, OR. WALLA WALLA, WA. KENNEWICK, WA.

SHEET
1/3

SURVEY NUMBER 039-2012



UNION COUNTY SURVEYOR
 Date Received 12/17/12
 Date Filed 12/17/12
 By R. ROBINSON, DEPUTY
 File No. 039-2012

REGISTERED PROFESSIONAL LAND SURVEYOR
 THOMAS E. BATTEY
 OREGON
 JULY 15, 2003
 THOMAS E. BATTEY
 73254 LS
 RENEWS 12/31/13
 DATED: 12/14/12

LEGEND

- INDICATES SECTION CORNER (SEE CORNER NOTES)
- INDICATES ONE-QUARTER SECTION CORNER (SEE CORNER NOTES)
- CORNER NOTE DESIGNATION (SEE CORNER NOTES SHEET 1, SEE COORDINATE TABLE SHEET 3)
- COORDINATE POINT VALUE, SEE TABLE SHEET 3
- INDICATES CALCULATED POINT FOR CENTERLINE ROAD PI (NOTHING SET)
- INDICATES SET 5/8" X 30" REBAR WITH ALUMINUM CAP STAMPED APA OR T3254 WA 30425
- INDICATES FOUND MONUMENT AS DESCRIBED HEREON

LEGEND (CONT.)

- INDICATES RIGHT-OF-WAY LINE
- INDICATES SECTION LINE
- INDICATES LEGALIZED CENTERLINE OF RIGHT-OF-WAY
- INDICATES EDGE OF ASPHALT PAVING
- INDICATES APPROXIMATE PROPERTY LINE
- INDICATES UNDERGROUND TELEPHONE
- INDICATES OVERHEAD POWER
- INDICATES CENTERLINE EXISTING DITCH

SURVEY NUMBER 039-2012

**MAP OF SURVEY
 PIERCE ROAD LEGALIZATION
 SECTIONS 35 & 36, T2S, R38E, W.M.
 SECTIONS 1 & 2, T3S, R38E, W.M.**

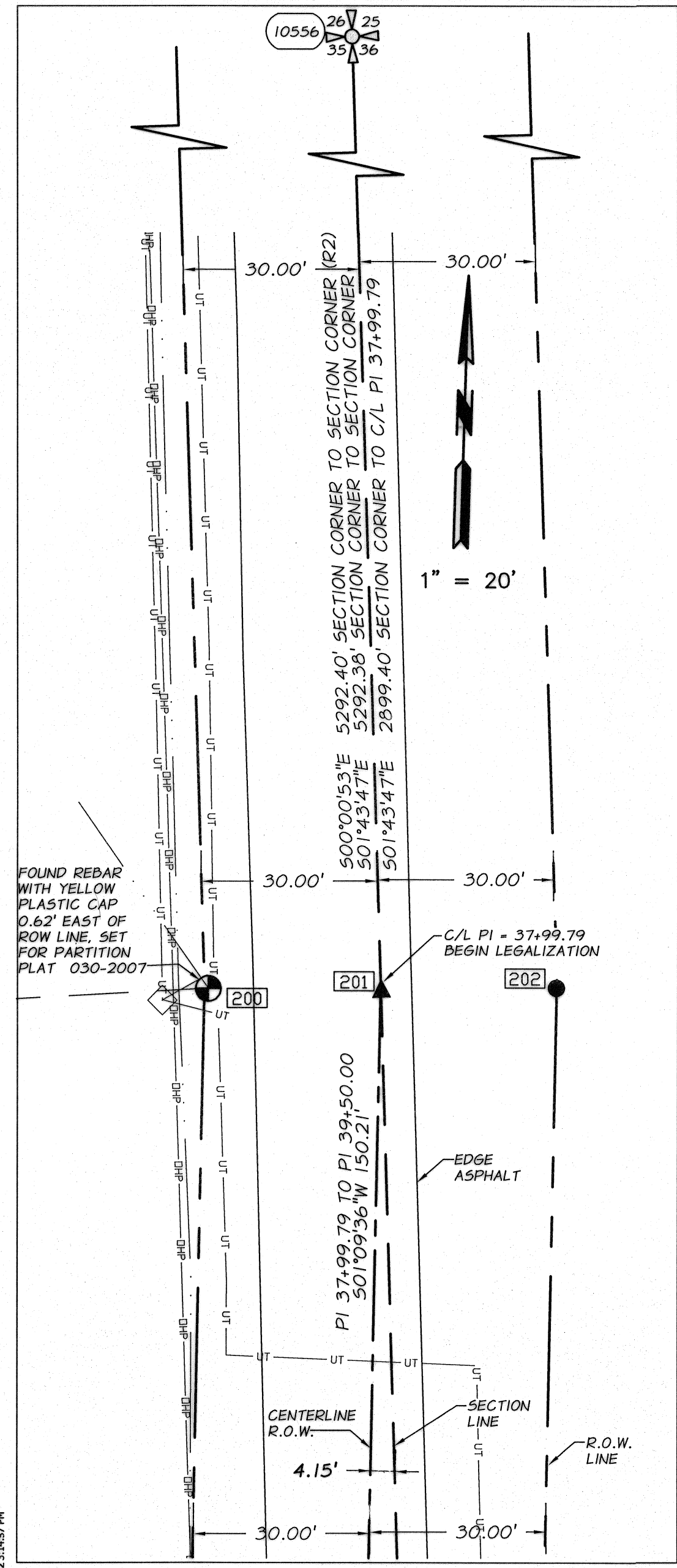
UNION COUNTY, OREGON

SCALE: 1" = 100'
 DATE: NOV. 2012
 JOB NO. 694-44

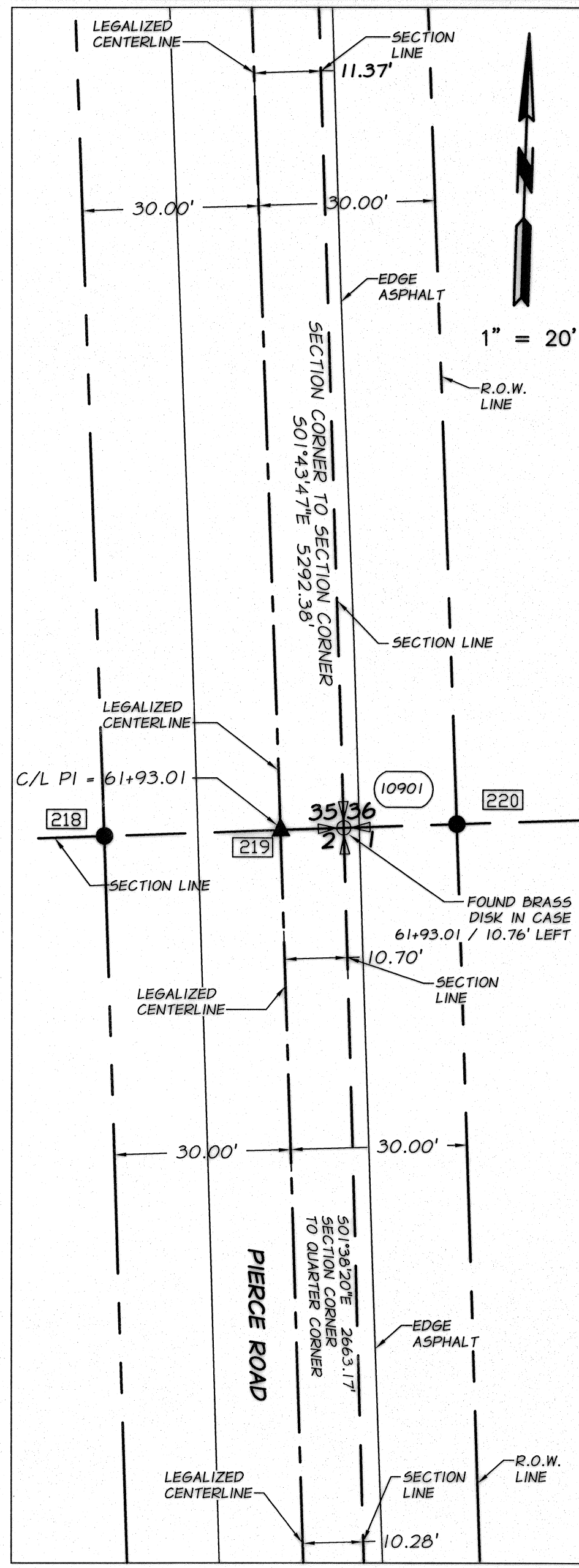
anderson perry
 associates, inc.
 ENGINEERING SURVEYING NATURAL RESOURCES
 LA GRANDE, OR. WALLA WALLA, WA. KENNEWICK, WA.

SHEET **2/3**

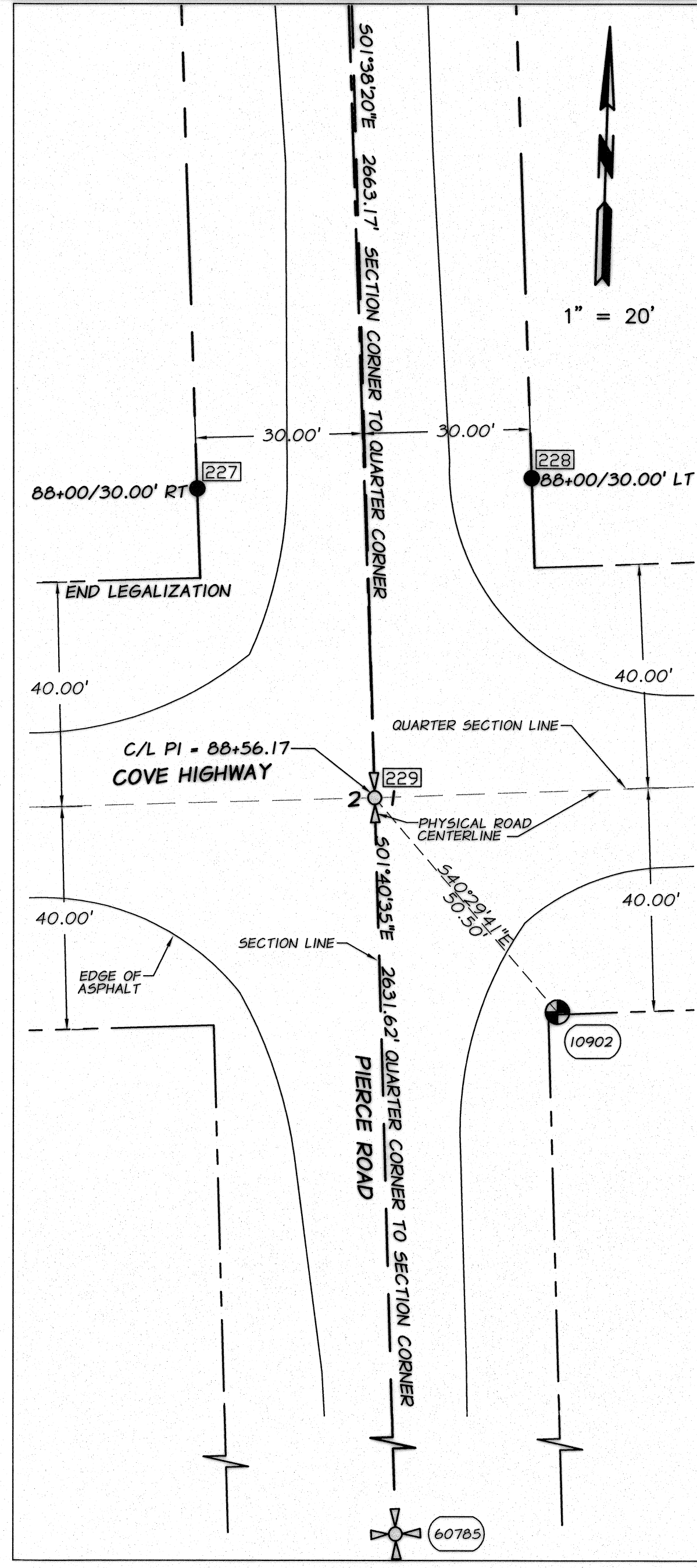
S:\Union\039-2012\039-44 Pierce RD 2010\Map\Legalization\MS.dwg, 12/17/2012 3:13:38 PM



DETAIL A



DETAIL B



DETAIL C

COORDINATE POINT TABLE

POINT	NORTHING	EASTING
200	622420.145	8841025.039
201	622421.067	8841054.406
202	622421.216	8841084.416
203	622270.762	8841021.356
204	622270.892	8841051.365
205	622271.021	8841081.374
206	622095.098	8841026.432
207	622095.965	8841056.419
208	622096.831	8841086.407
209	621145.653	8841049.351
210	621146.235	8841079.345
211	621146.816	8841109.340
212	621120.337	8841049.843
213	621121.239	8841079.830
214	621122.142	8841109.816
215	620688.990	8841062.821
216	620689.965	8841092.806
217	620690.939	8841122.790
218	620027.824	8841085.900
219	620028.837	8841115.883
220	620029.850	8841145.867
221	619221.298	8841112.240
222	619222.277	8841142.224
223	619223.257	8841172.208
224	618221.831	8841144.882
225	618222.810	8841174.866
226	618223.789	8841204.850
227	617422.257	8841170.995
228	617424.216	8841230.963
229	617367.092	8841202.809
10556	625319.142	8840966.884
10901	620029.172	8841126.642
10902	617367.092	8841202.809
60785	614731.741	8841275.755

UNION COUNTY SURVEYOR

Date Received 12/17/12

Date Filed 12/17/12

By R. Robinson Deary

File No. 039-2012

REGISTERED PROFESSIONAL LAND SURVEYOR

Tom E. Battey

OREGON
JULY 15, 2003
THOMAS E. BATTEY
73254 LS
RENEWS 12/31/13
DATED: 12/14/12

LEGEND

- INDICATES SECTION CORNER (SEE CORNER NOTES)
- INDICATES ONE-QUARTER SECTION CORNER (SEE CORNER NOTES)
- CORNER NOTE DESIGNATION (SEE CORNER NOTES SHEET 1, SEE COORDINATE TABLE SHEET 3)
- COORDINATE POINT VALUE, SEE TABLE SHEET 3
- INDICATES CALCULATED POINT FOR CENTERLINE ROAD PI (NOTHING SET)
- INDICATES SET 5/8" X 30" REBAR WITH ALUMINUM CAP STAMPED APA OR 73254 WA 30425
- INDICATES FOUND MONUMENT AS DESCRIBED HEREON

LEGEND (CONT.)

- INDICATES RIGHT-OF-WAY LINE
- INDICATES SECTION LINE
- INDICATES LEGALIZED CENTERLINE OF RIGHT-OF-WAY
- INDICATES EDGE OF ASPHALT PAVING
- INDICATES APPROXIMATE PROPERTY LINE

**MAP OF SURVEY
PIERCE ROAD LEGALIZATION
SECTIONS 35 & 36, T2S, R38E, W.M.
SECTIONS 1 & 2, T3S, R38E, W.M.**

UNION COUNTY, OREGON

SCALE:
1" = 20'

DATE:
NOV. 2012

JOB NO.
694-44

anderson perry
Associates, Inc.

ENGINEERING SURVEYING NATURAL RESOURCES
LA GRANDE, OR. WALLA WALLA, WA. KENNEWICK, WA.

SHEET
3/3

SURVEY NUMBER 039-2012

S:\Union\ROADS-2010\09-44 Pierce RD 2010\Union\PIERCE LEGALIZATION MGS.dwg, 12/17/2012 3:45:57 PM