

BASIS OF BEARING

True Geodetic North at the corner to Sections 19, 20, 29 and 30, Township 1 South, Range 40 East, of the Willamette Meridian, as determined by GPS observation.

SCALE: 1"=500'

LEGEND

- Found 2 1/2" iron pipe with 2 1/2" brass cap, set by Survey Number 57-81
- ⊙ Found 2 1/2" aluminum pipe with 3" aluminum cap, set by BLM Monumentation survey, executed by Scott McIntyre under special instructions dated July 13, 1979
- Found 2 1/2" aluminum pipe with 2 1/2" aluminum cap for witness corners, marked as per Union County Monumentation records, set by Survey Number 37-86
- ⊕ Found 2 1/2" aluminum pipe with 2 1/2" aluminum cap, marked as per Union County Monumentation Records, set by Survey Number 039-2004
- Set 5/8" x 30" iron pin with 2 1/2" aluminum cap, marked as per Union County Monumentation Records, filed separately
- { } Record measurement as per Survey Number 37-86
- < > Record measurement as per Survey Number 039-2004
- () Record measurement as per field notes of GLO Contract No. 450, executed by Henry Meldrum, dated June 11, 1882

REFERENCE MATERIAL

Union County Monumentation Records
 Survey Number 37-86
 Survey Number 35-88
 Survey Number 57-81
 Survey Number 041-2003
 Survey Number 039-2004
 Survey Number 042-2004
 Partition Plat Number 20120011T
 Partition Plat Number 20130001T

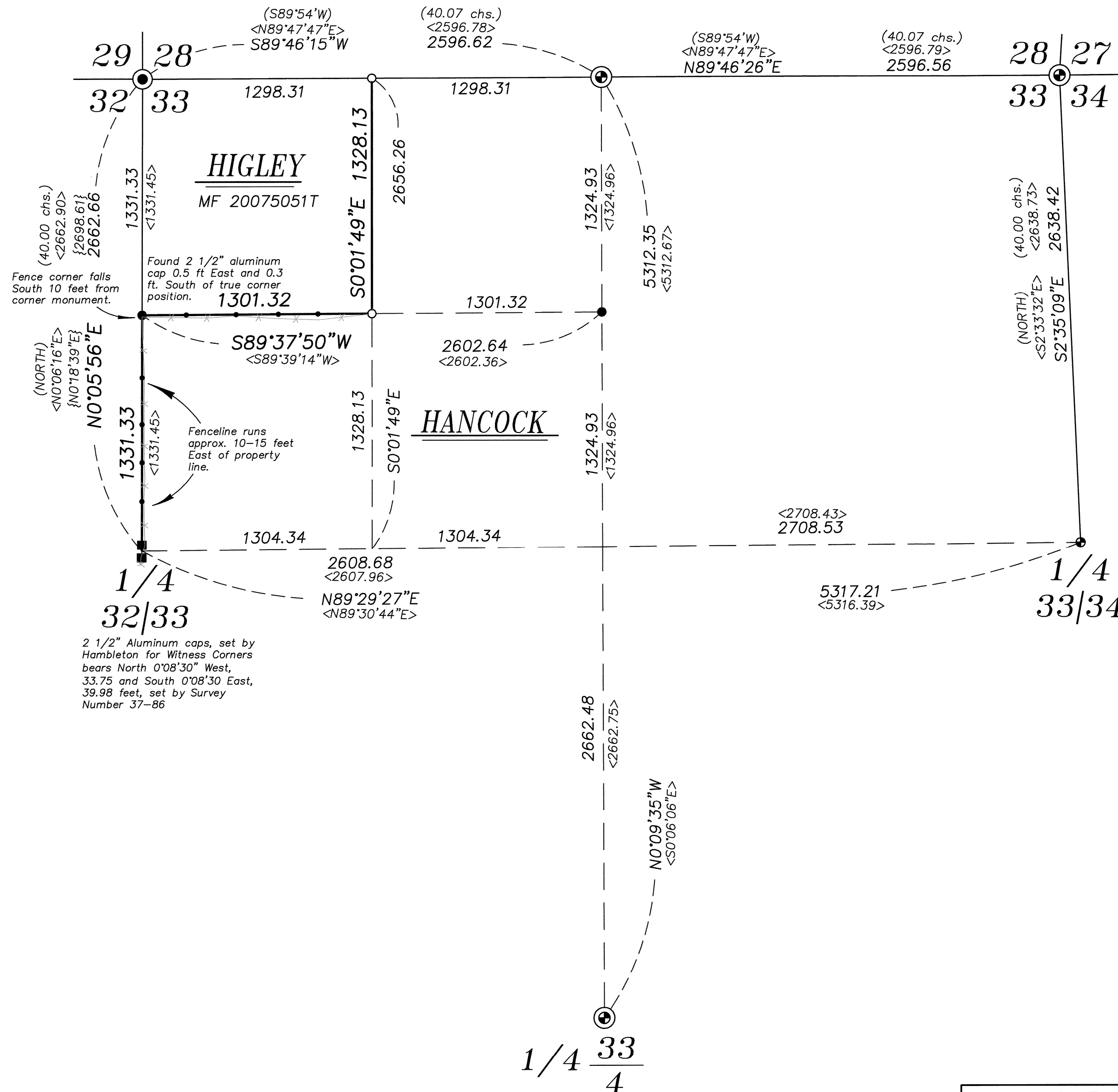
Field notes of GLO contract number 450, executed by Henry Meldrum, dated June 11, 1882

BLM Monumentation survey, executed by Scott McIntyre under special instructions dated July 13, 1979

DEED REFERENCES
 Microfilm Document Number 20134275
 Microfilm Document Number 20075051T

NARRATIVE

This survey was done at the request of Patrick Marolla, on behalf of Hancock Forest Management, land manager for the land shown. Mr. Marolla wanted the corners set along the portion of the property as shown in preparation for a timber harvest. I recover the monuments and accept them as shown hereon. I subdivide the section as per BLM Manual of Instructions 2009. I find no other unusual conditions with this survey.



UNION COUNTY SURVEYOR

Date Received 7/15/19

Date Filed 7/15/19

By [Signature]

File No. 016-2019

REGISTERED PROFESSIONAL LAND SURVEYOR

OREGON

JEFFREY S. HSU

83571

Renewal Date: June 30, 2021

BAGETT, GRIFFITH & BLACKMAN
 2006 Adams Avenue, LaGrande, Oregon
 Map of Survey

Situate in Section 33, Township 1 South, Range 40 East of the Willamette Meridian

UNION COUNTY, OREGON

SURVEYED FOR	Hancock Forest Management
SURVEYED BY	J. S. H.
Scale: 1"=500'	Drawn by: J. S. H. July 2019