

# LOT LINE ADJUSTMENT BASIS OF BEARING

Forward bearing as published by the U.S.C. and G.S. from  $\Delta$  COLLEGE to  $\Delta$  VALLEY Dated 1946.

SCALE: 1"=50'

## LEGEND

- Found 5/8" iron pin with yellow plastic cap marked "BGA SURVEY MARKER", set by ISLAND WEST ADDITION II
- Found 5/8" iron pin, set by Survey No. 21-76
- Found 5/8" iron pin with yellow plastic cap marked "BGB SURVEY MARKER", set by Minor Partition Plat Number 20110007T
- ▲ Found 5/8" iron pin with yellow plastic cap marked "BGB SURVEY MARKER", set by Minor Partition Plat Number 20130006T
- Found 5/8" iron pin with yellow plastic cap marked "BGB SURVEY MARKER", set by Minor Partition Plat Number 20140020T
- ◆ Found 5/8" iron pin with yellow plastic cap marked "BGB SURVEY MARKER", set by Minor Partition Plat Number 20170015T
- Found 5/8" iron pin with yellow plastic cap marked "BGB SURVEY MARKER", set by Partition Plat Number 20190003T
- Set 5/8"x30" iron pin with plastic cap marked "BGB SURVEY MARKER" to be set upon approval
- Centerline of road or easement
- - - - - Easement Line
- ( ) Record measurement as per Partition Plat 20080023T

## APPROVALS

I hereby approve this lot line adjustment this 13<sup>th</sup> day of April, 2020.

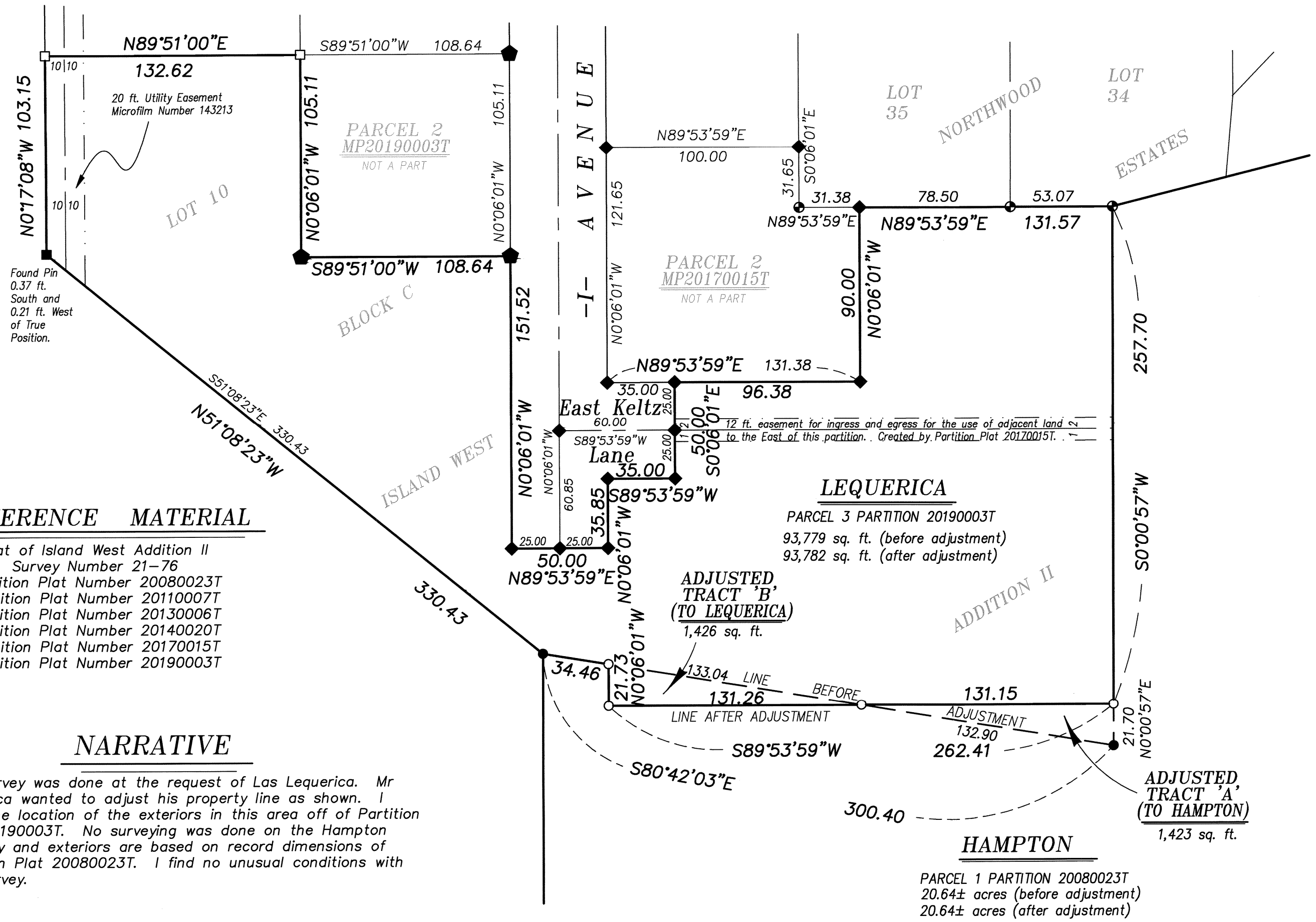
UNION COUNTY SURVEYOR  
Date Received 4/15/20  
Date Filed 4/15/20  
By N. S. Griffin  
File No. 008-2020

Robb Rea  
Robb Rea, Mayor  
City of Island City

REGISTERED PROFESSIONAL LAND SURVEYOR  
OREGON JUNE 2, 2010  
JEFFREY S. HSU 83571  
Renewal Date: June 30, 2021

BAGETT, GRIFFITH & BLACKMAN 2006 Adams Avenue, LaGrande, Oregon Map of Survey	
Sited in the Northwest quarter of Section 3, Township 3 South, Range 38 East of the Willamette Meridian	
UNION COUNTY, OREGON	
SURVEYED FOR	Las Lequerica
SURVEYED BY	J. S. H.
Scale: 1" = 50'	Drawn by: J. S. H. Mar. 2020

SURVEY NUMBER 008-2020

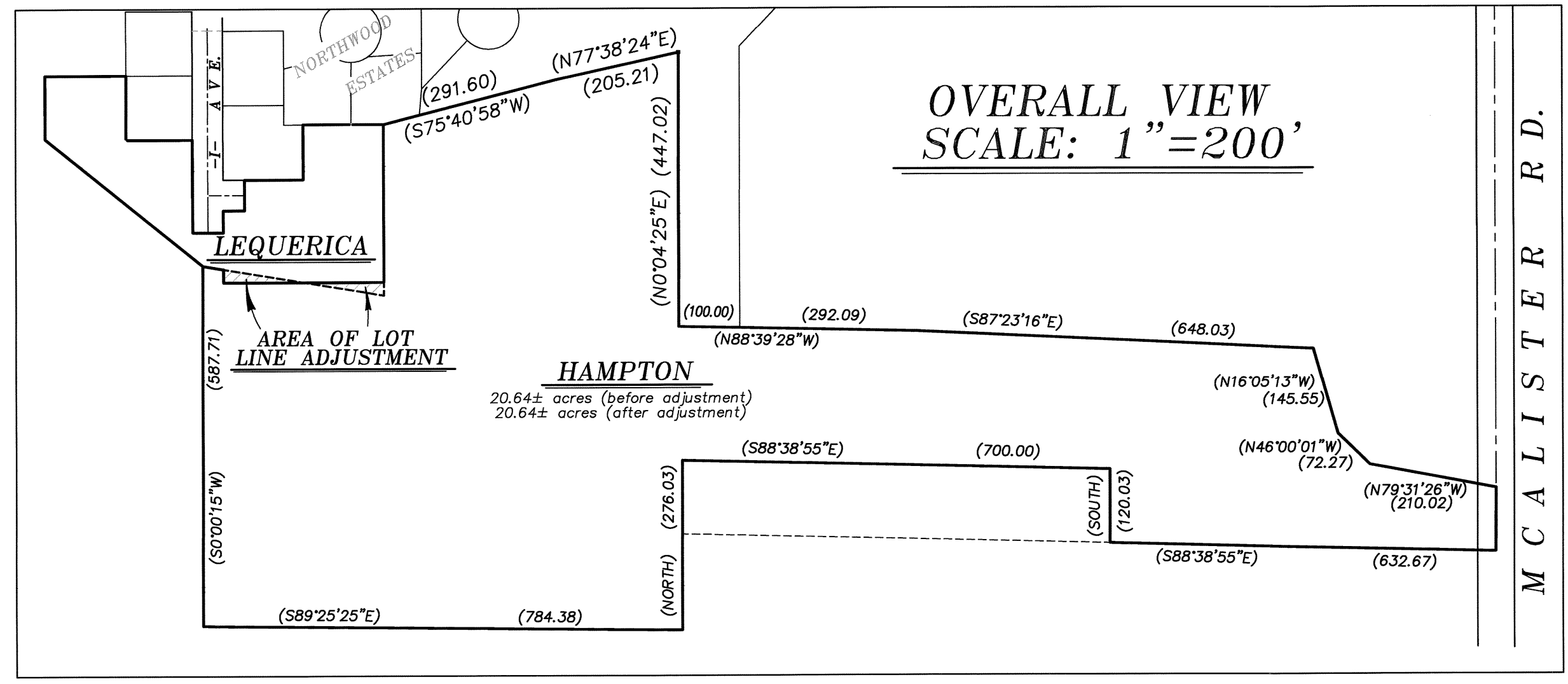


## REFERENCE MATERIAL

- Plat of Island West Addition II Survey Number 21-76
- Partition Plat Number 20080023T
- Partition Plat Number 20110007T
- Partition Plat Number 20130006T
- Partition Plat Number 20140020T
- Partition Plat Number 20170015T
- Partition Plat Number 20190003T

## NARRATIVE

This survey was done at the request of Las Lequerica. Mr Lequerica wanted to adjust his property line as shown. I base the location of the exteriors in this area off of Partition Plat 20190003T. No surveying was done on the Hampton property and exteriors are based on record dimensions of Partition Plat 20080023T. I find no unusual conditions with this survey.



Found Pin 0.37 ft. South and 0.21 ft. West of True Position.

20 ft. Utility Easement  
Microfilm Number 143213

12 ft. easement for ingress and egress for the use of adjacent land to the East of this partition. Created by Partition Plat 20170015T.