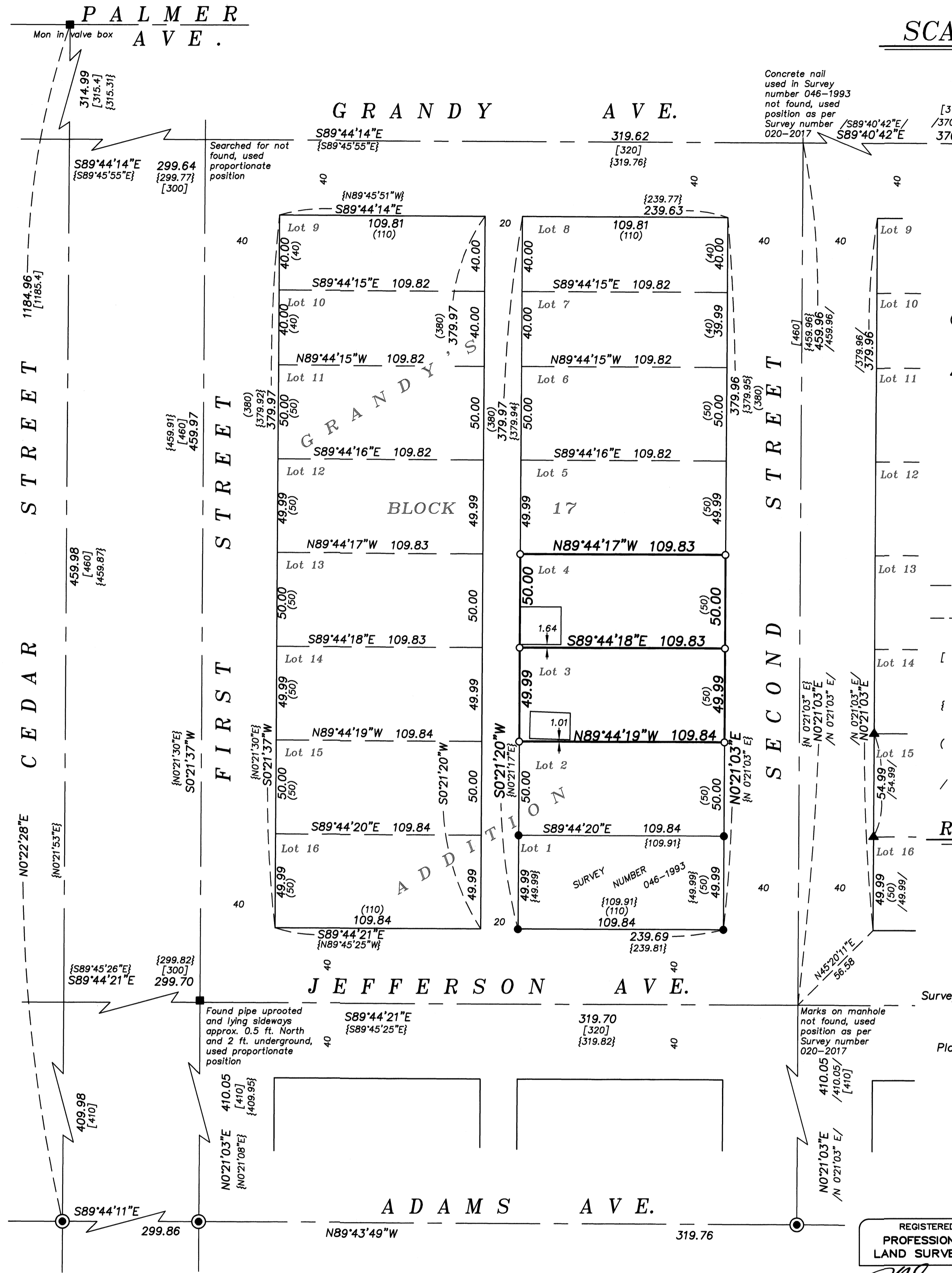


# BASIS OF BEARING

Forward bearing as published by the U.S.C. and G.S. from  $\Delta$  COLLEGE to  $\Delta$  VALLEY Dated 1946.

SCALE: 1" = 40'



## LEGEND

- Found 2" brass disc in concrete set by Survey Number 13-88
- ▲ Found 5/8" iron pin with plastic cap marked BGA SURVEY MARKER, set by Survey Number 020-2017
- Found 5/8" iron pin with plastic cap marked BGA SURVEY MARKER, set by Survey Number 046-1993
- Found 1" iron pipe, set by Survey Number 18-89
- Set 5/8"x30" iron pin, with plastic cap marked BGA SURVEY MARKER
- Centerline
- - - Lot line, as per plat of Grandy's Addition
- [ ] Record measurement as per Survey Number 18-89 (1922 monumentation of La Grande)
- { } Record measurement as per Survey Number 046-1993
- ( ) Record measurement as per plat of Grandy's Addition
- / / Record measurement as per Survey Number 020-2017

## REFERENCE MATERIAL

- Survey Number 35-65
- Survey Number 10-69
- Survey Number 89-72
- Survey Number 58-74
- Survey Number 23-73
- Survey Number 63-73
- Survey Number 89-77
- Survey Number 56-80
- Survey Number 4-66
- Survey Number 024-1992
- Survey Number 046-1993
- Survey Number 18-89 (1922 monumentation)
- Survey Number 037-2002
- Survey Number 013-2017
- Survey Number 020-2017
- Plat of Grandy's Addition to La Grande

DEED REFERENCES  
Microfilm Number 144261  
Microfilm Number 144262

## NARRATIVE

This survey was done at the request of Gail Nelson and Kay Stoneberg, owners of the lands within. They wanted to monument the exterior of their properties because they had concerns about possible building encroachments. I recover the brass caps set at the intersection of Adams Ave. and First, Second and Cedar Streets and the McIn Iron pipe at the intersection of Third St. and Grandy Ave. and accept these monuments in place. I recover the McIn monument at the intersection of Jefferson Ave. and First St. but it has been uprooted, broken, and is out of position. The intersection of Jefferson Ave. and Second St. was originally marks on a manhole rim which has since been replaced. Survey 020-2017 placed this intersection as well as the intersection of Grandy Ave. and Second St. I hold the position as per said survey. Along Cedar Street, I place the intersection of Jefferson Ave and the intersection of Grand at proportionate position. This is the same methodology employed by Norm Paullus in Survey 024-1992 and is harmonious with measurements of Survey 046-1993. At the intersections of First St. and Grandy Ave. and the one at First and Jefferson St., I find no trace of the original McIn pipes and use the proportionate position between Cedar St. and Second St. Establishing the block in this manner is harmonious with the monuments of Surveys 043-1993 and 020-2017.

The buildings of concern, though close to the property lines, do not encroach onto adjoining properties. I find no unusual conditions with this survey.

REGISTERED  
PROFESSIONAL  
LAND SURVEYOR

JEFFREY S. HSU  
83571

Renewal Date: June 30, 2021

UNION COUNTY  
SURVEYOR

Date Received 5/3/21

Date Filed 5/3/21

By [Signature]

File No. 014-2021

BAGETT, GRIFFITH & BLACKMAN

2006 Adams Avenue, LaGrande, Oregon  
Map of Survey

Situate in Lots 3 and 4 of Block 17, Grandy's Addition to the City of La Grande

UNION COUNTY, OREGON

SURVEYED FOR Kay Stoneberg and Gail Nelson

SURVEYED BY J. S. H.

Scale: 1" = 40'

Drawn by: K. A. T.

April 2021

SURVEY NUMBER 014-2021