

LOT LINE ADJUSTMENT

REFERENCE MATERIAL

Survey Number 54-73
 Partition Plat 1997-33
 Partition Plat 2003-01

DEED REFERENCES
 Microfilm Document Number 20032430
 Microfilm Document Number 20172880
 Microfilm Document Number 20173810

APPROVALS

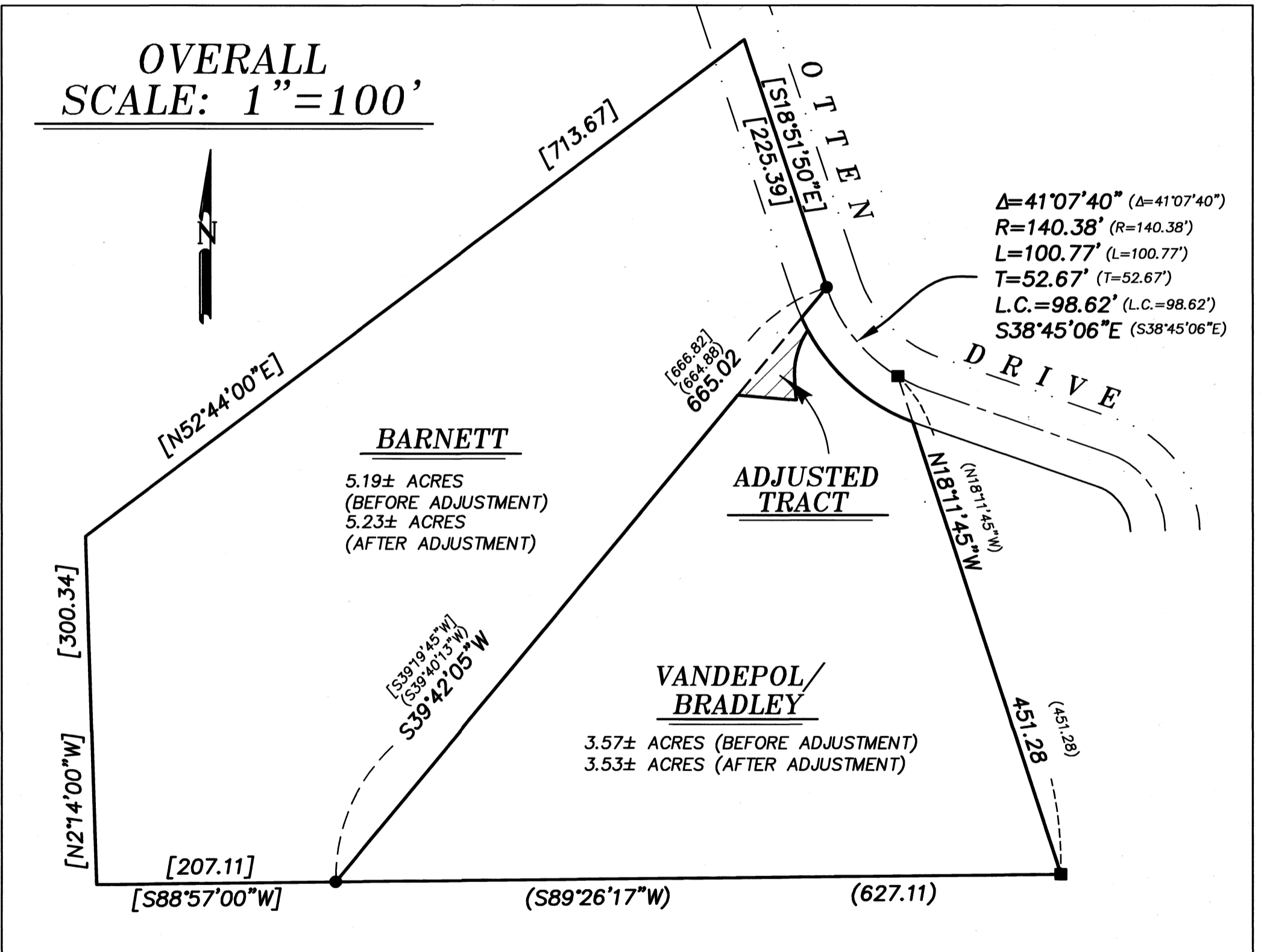
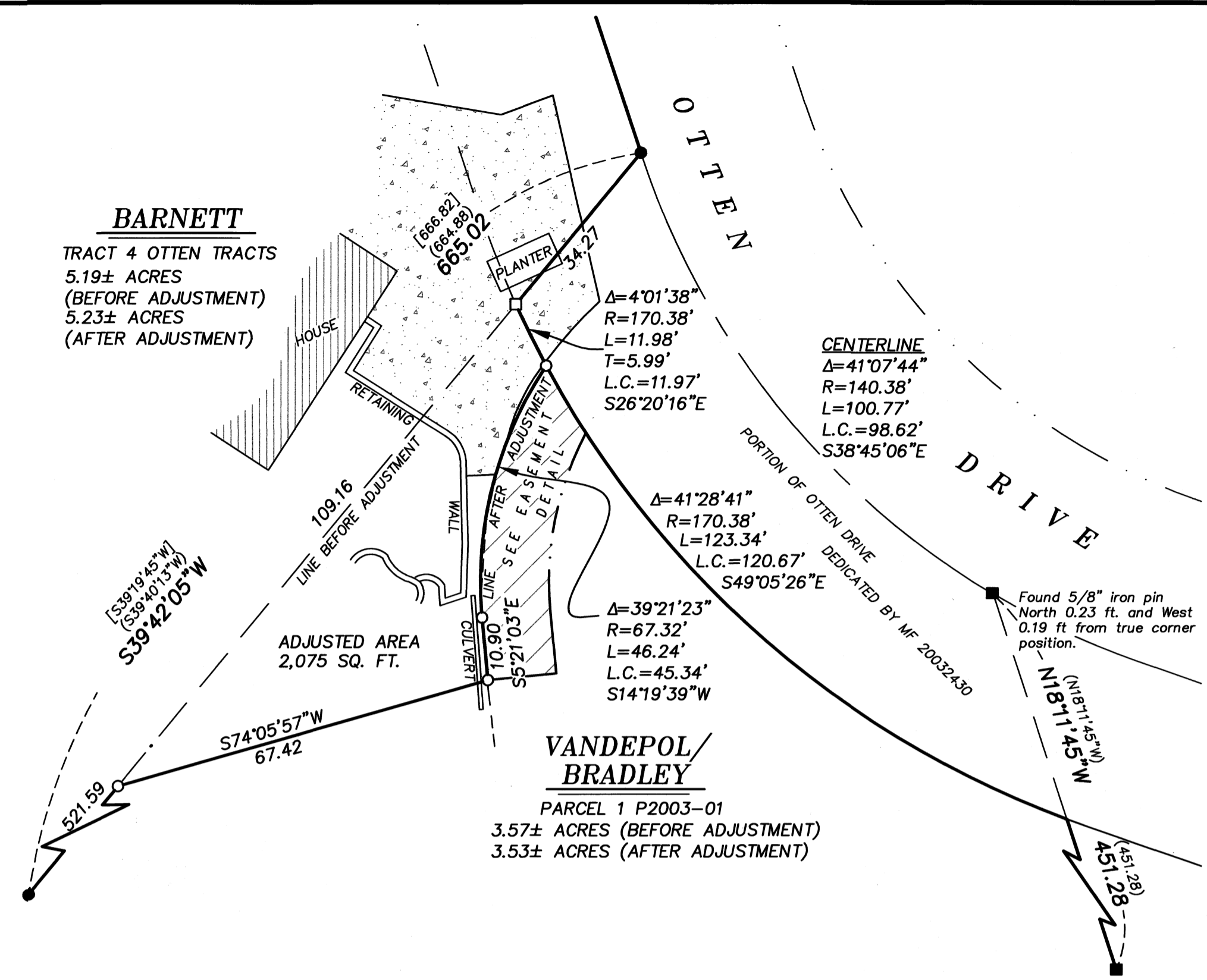
I hereby approve this lot line adjustment
 this 17th day of August, 2021

Michael J. Boquist
 Michael J. Boquist
 Community Development Director
 City of La Grande

BASIS OF BEARING

Forward bearing as published by the U.S.C.
 and G.S. from Δ COLLEGE to Δ VALLEY
 Dated 1946.

SCALE: 1"=20'

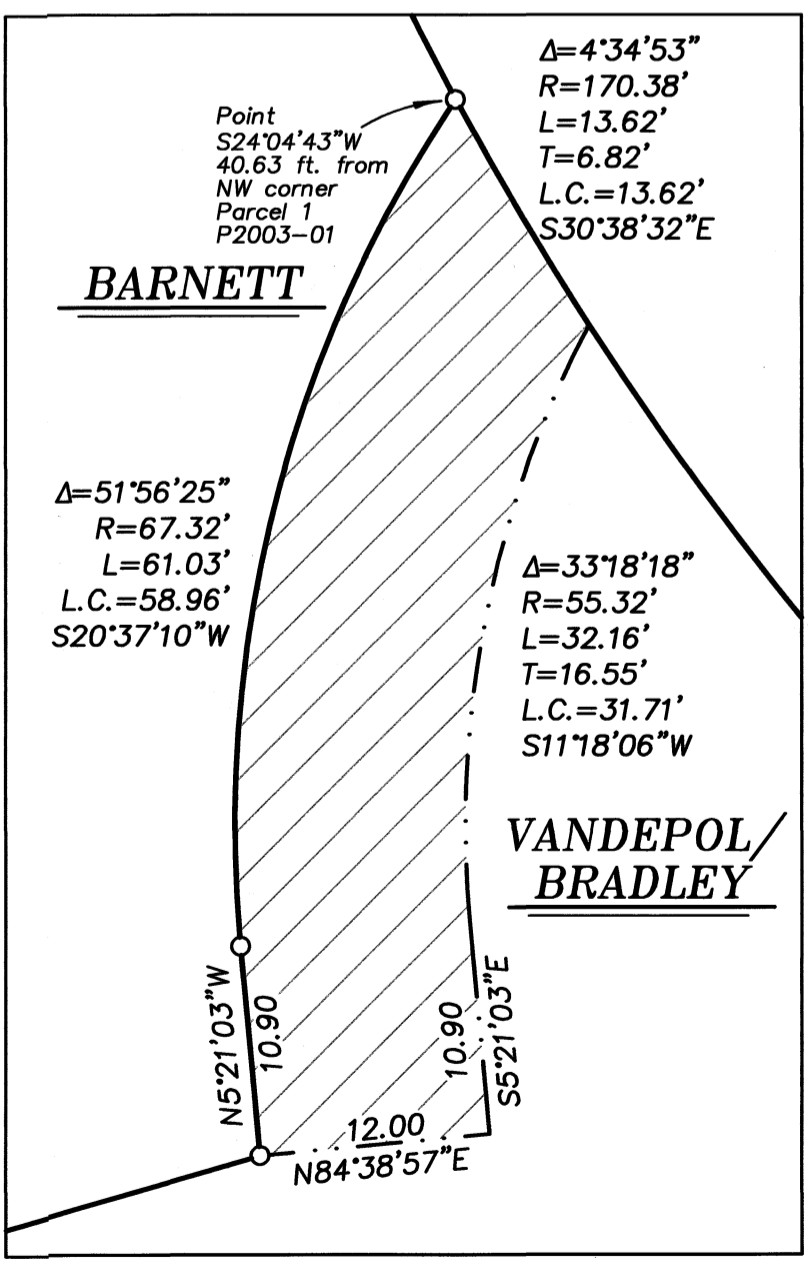


LEGEND

- Found 5/8" iron pin set by Survey Number 54-73 (Unrecorded Plat of Otten Tracts)
- Found 5/8" iron pin with plastic cap marked BGB SURVEY MARKER, set by Partition Plat 2003-01
- Set 5/8"x30" iron pin with plastic cap marked BGB SURVEY MARKER
- Set lead plug with brass screw and washer marked OPLS 83571
- Easement Line
- [] Record measurement as per Survey Number 54-73
- () Record measurement as per Partition Plat Number 2003-01
- ▨ Easement Area
- ▤ Concrete Surface

NARRATIVE

This survey was done at the request of Bill Barnett, owner of the acquiring tract of this lot line adjustment. The purpose of this survey is to monument a lot line adjustment being done to rectify encroachments. I recover the monuments along the common line between the properties set by Survey Number 54-73 and hold them as found. I place the adjusted line at the direction of the landowners. I find no unusual conditions with this survey.



REGISTERED
**PROFESSIONAL
 LAND SURVEYOR**
Jeffrey S. Hsu
 OREGON
 JUNE 2, 2010
JEFFREY S. HSU
 83571
 Renewal Date: June 30, 2023

UNION COUNTY
 SURVEYOR

Date Received 8/17/21
 Date Filed 8/17/21
 By *J.S.H.*
 File No. 037-2021

BAGETT, GRIFFITH & BLACKMAN
 2006 Adams Avenue, LaGrande, Oregon
 Map of Survey

Sited in the Northeast quarter of Section 6,
 Township 3 South, Range 38 East of the
 Willamette Meridian, City of La Grande

UNION COUNTY, OREGON

SURVEYED FOR	Bill Barnett	
SURVEYED BY	J. S. H.	
Scale: 1" = 20'	Drawn by: J. S. H.	Aug. 2021