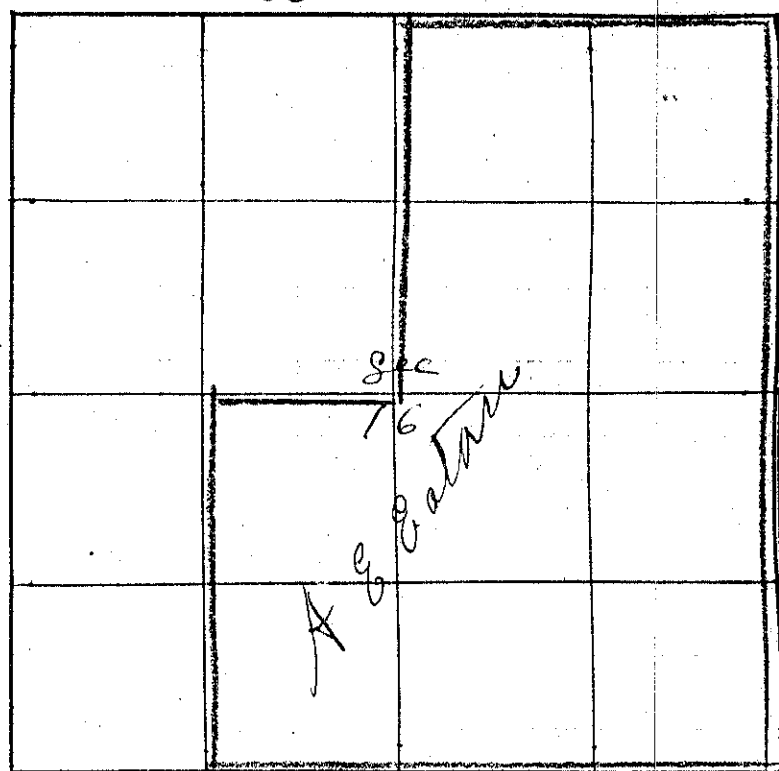


Township 4 South Range 39 East W.M. Union County, Oregon.

A. E. Eaton May the 10 1888

I Commenced at the corner to Sec 9=10=15 & 16 a Post in mid of Stone
Thence South var 20° E

- 20 30 Set Temporary 1/4 corner
- 40 50 found no 1/4 sec cor Set temporary 1/4 sec post
- 50 88 Intersect - E of W line 50 1/2 west of corner
to Sec 15=16=21 & 22 a Post in mid of Stone
Thence N 21° W on same line
- 40 44 Set Post in Mound of Stone for 1/4 sec cor.
- 60 66 Set Post in mound of Stone for 1/4 corner
- 80 88 the corner to Sec 9=10=15 & 16



The corner to Sec 15=16=21 & 22
Thence west set Sec 16 & 21 var 20° E

- 40 57 the 1/4 sec cor a Post in Mound of Stone
- 60 57 Set Temporary 1/4 corner
- 80 89 the corner to Sec 16=17=20 & 21 a Post
Thence East
- 20 16 Set Post in Mound of Stone for 1/4 corner
- 40 32 the 1/4 sec cor set Sec 16 & 21

The 1/4 Sec corner set Sec 16 & 17 Post in mid of Stone
Thence East var 20° E

- 20 30 Set Temporary 1/4 corner Suspend work at this point
JW Kimbrell Deputy County Surrogate