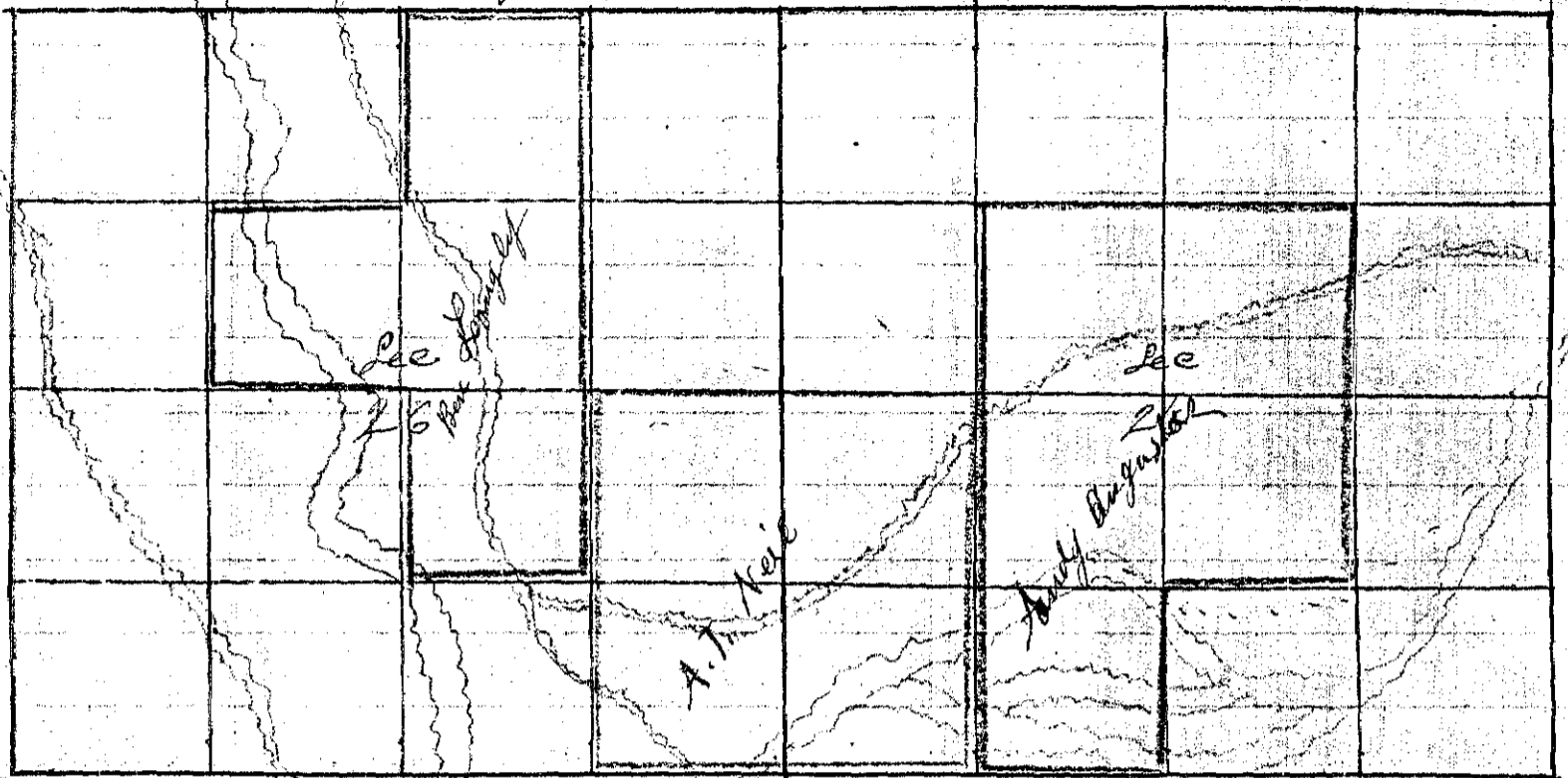


No 97

Township 9 South Range 45 East W. M. Union County, Oregon.

A. J. Neil, Ben Longly and Andy Augustus Nov. 9<sup>th</sup> 1889



I commenced at the corner of Sec 23 = 24 = 25 & 26  
Thence East bet Sec 24 & 25  
Var 20° E

- 20 00 Set Temporary 1/8 corner
- 40 00 Set Temporary 1/4 Sec corner
- 80 00 Intersect 7 Poles south of corner of Sec 29 = 30 = 24 & 25 -  
On Range line bet Ranges 45 & 46 East  
Thence S 89° 57' W on true line
- 40 00 Set Post dug pits Built Mound for 1/4 Sec cor bet Sec 24 & 25
- 69 50 Set Post dug pits Built Mound for 1/8 cor
- 80 50 The corner of Sec 23 = 24 = 25 & 26  
Thence South bet Sec 25 & 26  
Var 20° E

- 20 00 Set Temporary 1/8 cor
- 40 50 Set Temporary 1/4 Sec cor
- 77 40 Powder River 221 lks across Course N 80° E
- 80 27 Intersect 170 lks west of the cor to Sec 25 = 26 = 35 & 36  
from which

a Cottonwood 18 inch dia. bet S 68° W 48 lks dist.  
" 24 " " " N 85° E 106 " "  
" 6 " " " N 19° W 31 " "  
an alder 4 " " " S 18° E 38 " "

Thence N 7° 15' W on true line bet Sec 25 & 26

- 40 13 1/2 Set Stone 6 x 10 x 18 for 1/4 Sec cor bet Sec 25 & 26
- 60 20 Set Post for 1/8 cor
- 80 27 The corner of Sec 23 = 24 = 25 & 26