

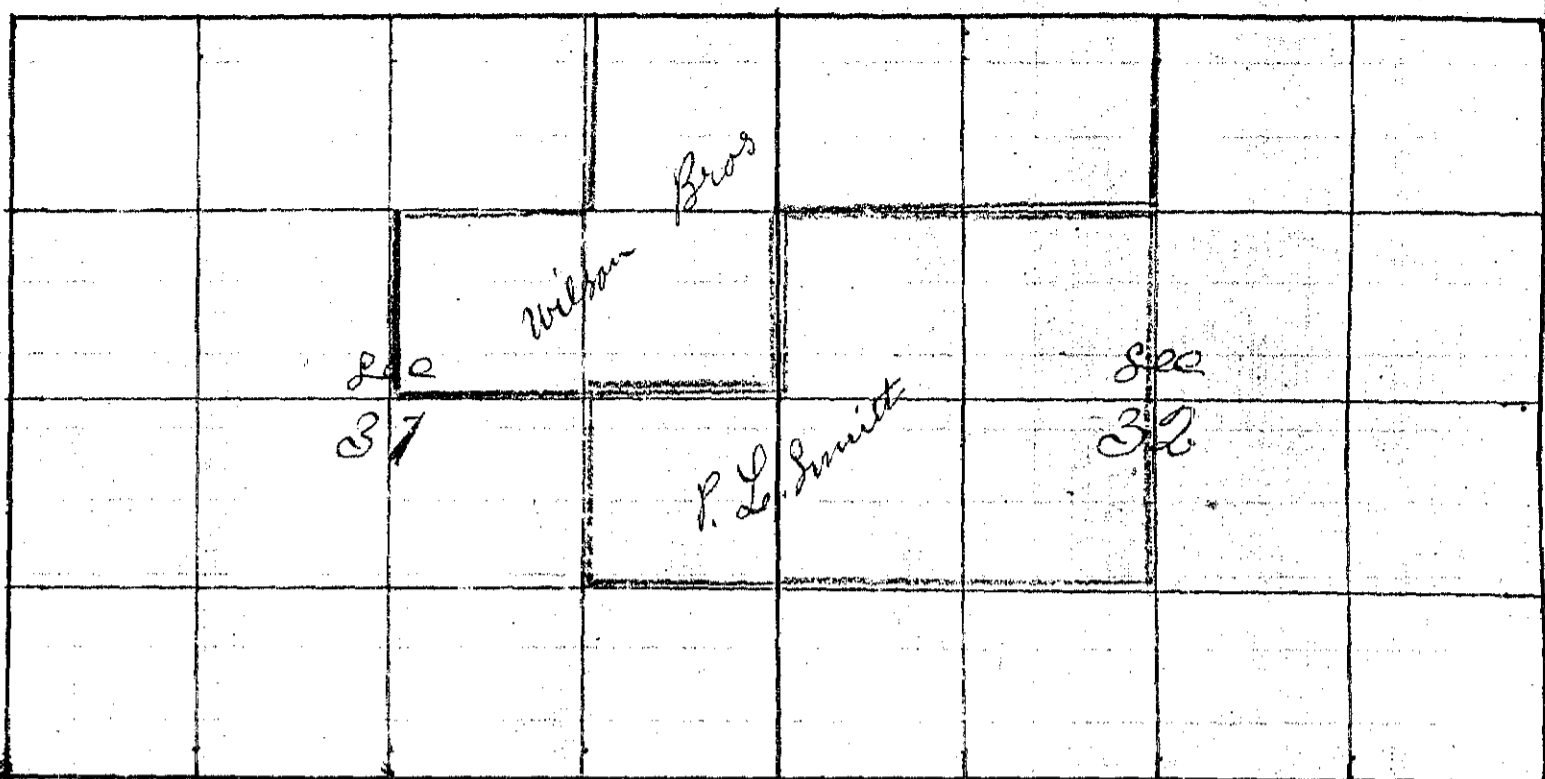
Township 6 South

Range 39 East W.M.

Union County, Oregon.

P.L. Smith and Wilson Bros.

CHAINS. LKS.



I Commenced at the corner to Sec 29=30=31 & 32
 Thence South to Sec 31 & 32
 Var 20° E

- 20 55 Set Temporary 1/8 corner
- 40 55 Set Temporary 1/4 Sec corner
- 60 55 Set Temporary 1/8 cor
- 79 42 The corner to Sec 5=6=31 & 32

Thence North

- 37 46 Set Stone 6x9x18 for 1/4 Sec corner to Sec 31 & 32
- 57 94 Set Stone 7x6x14 for 1/8 corner
- 74 42 The corner to Sec 29=30=31 & 32

The 1/4 Sec

The 1/4 Sec corner to Sec 31 & 32

Thence East through Sec 32

Var 20° E

- 40 12 The center Sec 32

Thence North through N 1/2 Sec 32

Var 20° E

- 25 05 Set Post for 1/16 corner in Center N 1/2 Sec 32
- 40 55 The 1/4 Sec corner to Sec 29 & 32

The 1/4 Sec cor to Sec 31 & 32

Thence West through Sec 31 Var 20° E

- 20 50 Set Temporary 1/16 corner
- 45 50 Set Temporary outside Sec 31
- 65 55 Set Temporary 1/16 corner

78 03 Intersect 27 lks North of 1/4 Sec corner to Sec 31 & 32
 Post decayed Set cast iron cog wheel 15 inch diameter edge up in line
 Thence N 89° 48' E on line line through Sec 31

W. Tomlinson County Surveyor